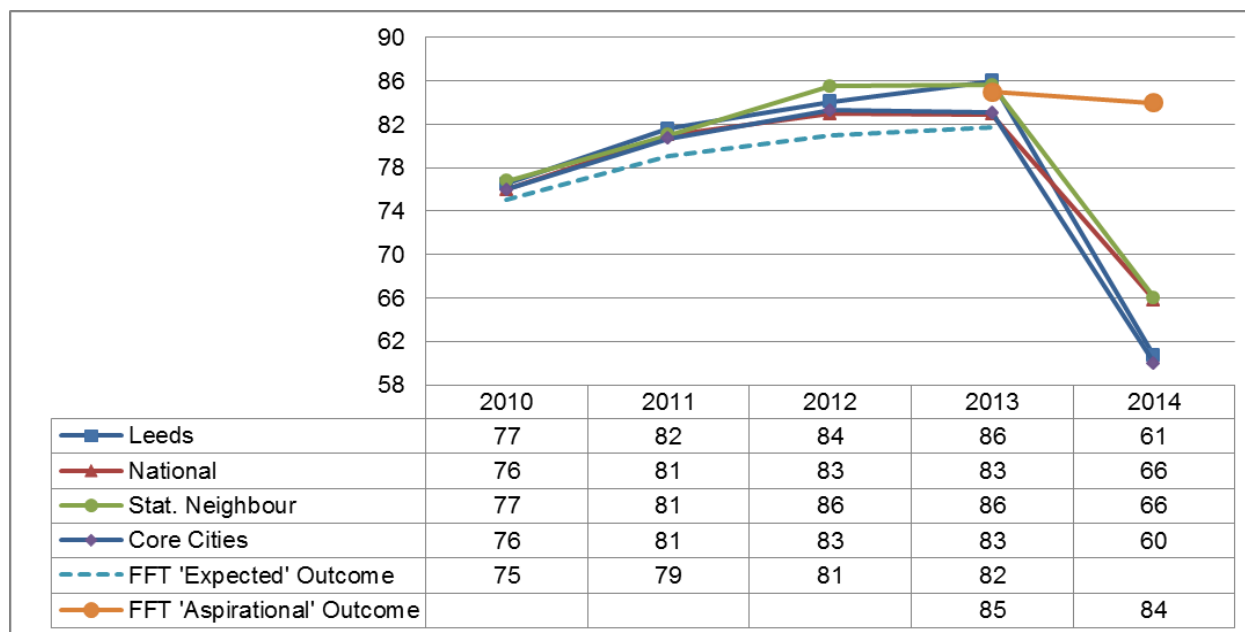


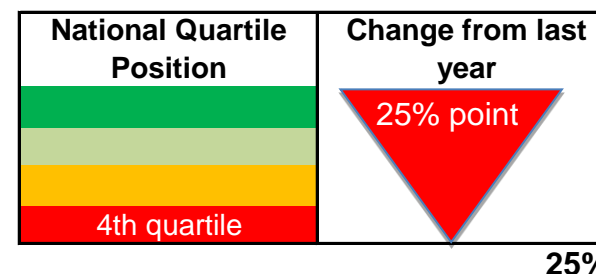
2013-14, Key Stage 4 - Learning Outcomes Dashboards

Dashboards	Changes Since Previous Version
Percentage of pupils achieving 5 A*-C at GCSE	Dashboard Updated
Percentage of pupils achieving 5 A*-C including English and Maths at GCSE	Dashboard Updated
Percentage of pupils achieving 5 A*-G at GCSE	Dashboard Updated
Percentage of pupils achieving the English Baccalaureate	Dashboard Updated
Percentage of no passes at GCSE	Dashboard Updated
Percentage of pupils making expected progress between Key Stage 3 and 4	Dashboard Updated
Percentage of pupils making expected progress between Key Stage 4 and 5	Dashboard Updated
Capped Average Point Score Per Pupil	Dashboard Updated
Percentage of schools not reaching the floor standard	New dashboard added

2013-14, Key Stage 4 - Percentage of pupils achieving 5 A*-C at GCSE



England Rank	126/151
--------------	---------



Key Issues: Please note it is not possible to compare 2013/14 results with previous years due to the reasons outlined in the Main text: SFR02/2015 which can be found here: https://www.gov.uk/government/uploads/system/uploads/attachment_data/file/399238/SFR_02_2015-revised_GCSE_and_equivalents.pdf. It is also important to note the statistical neighbour list for Leeds was revised in October 2014, therefore any comparisons should be made with caution.

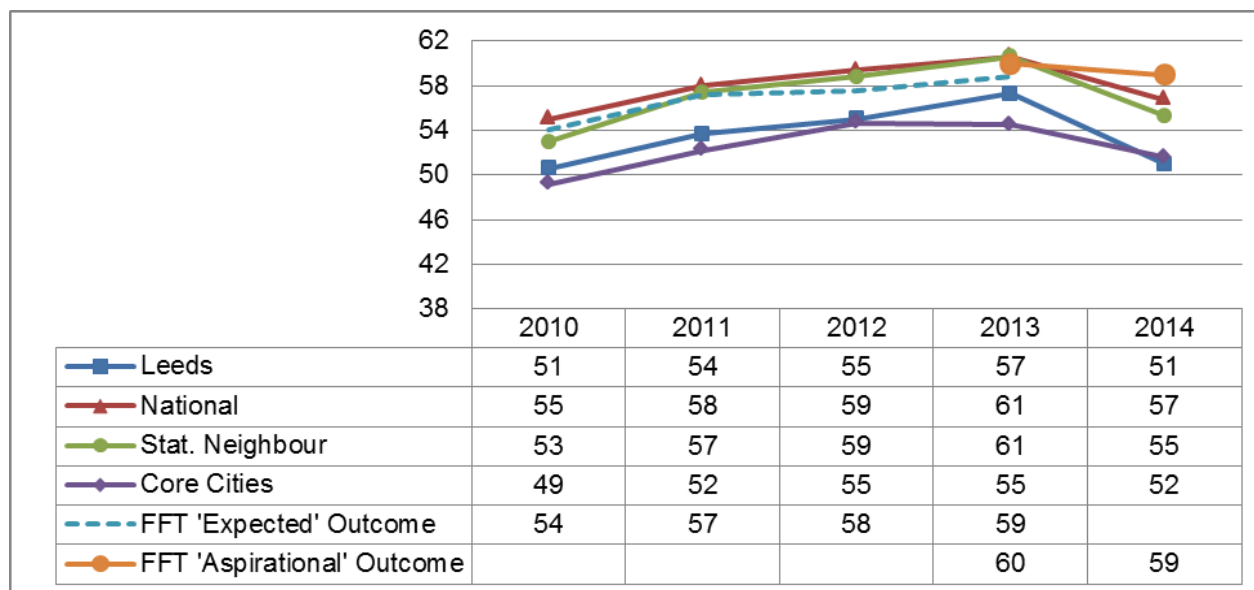
Data Status: Final

Data Source: DfE Statistical First Release SFR 02/2015

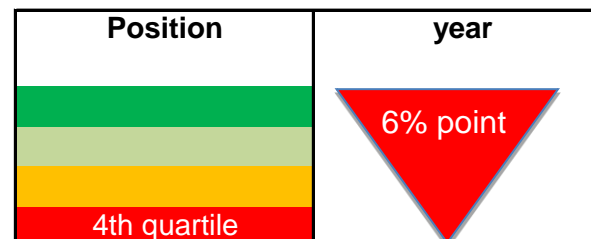
Data Notes:



2013-14, Key Stage 4 - Percentage of pupils achieving 5 A*-C including English and Maths at GCSE



England Rank	equal 129/151
--------------	---------------



Key Issues: Please note it is not possible to compare 2013/14 results with previous years due to the reasons outlined in the Main text: SFR02/2015 which can be found here: https://www.gov.uk/government/uploads/system/uploads/attachment_data/file/399238/SFR_02_2015-revised_GCSE_and_equivalents.pdf. It is also important to note the statistical neighbour list for Leeds was revised in October 2014, therefore any comparisons should be made with caution.

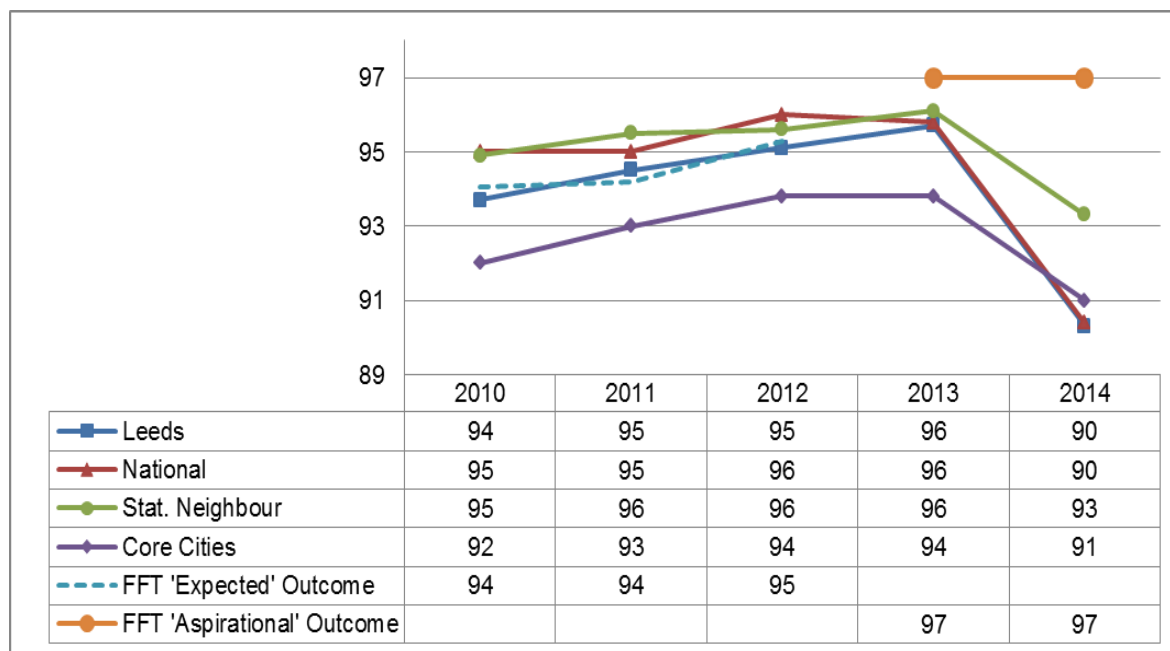
Data Status: Final

Data Source: DfE Statistical First Release SFR 02/2015

Data Notes:



2013-14, Key Stage 4 - Percentage of pupils achieving 5 A*-G at GCSE



England Rank	143/151
--------------	---------

National Quartile Position	Change from last year
4th Quartile	6% point

Key Issues: Please note it is not possible to compare 2013/14 results with previous years due to the reasons outlined in the Main text: SFR02/2015 which can be found here:

[https://www.gov.uk/government/uploads/system/uploads/attachment_data/file/399238/SFR_02_2015-](https://www.gov.uk/government/uploads/system/uploads/attachment_data/file/399238/SFR_02_2015-revised_GCSE_and_equivalents.pdf)

revised_GCSE_and_equivalents.pdf. It is also important to note the statistical neighbour list for Leeds was revised in October 2014, therefore any comparisons should be made with caution.

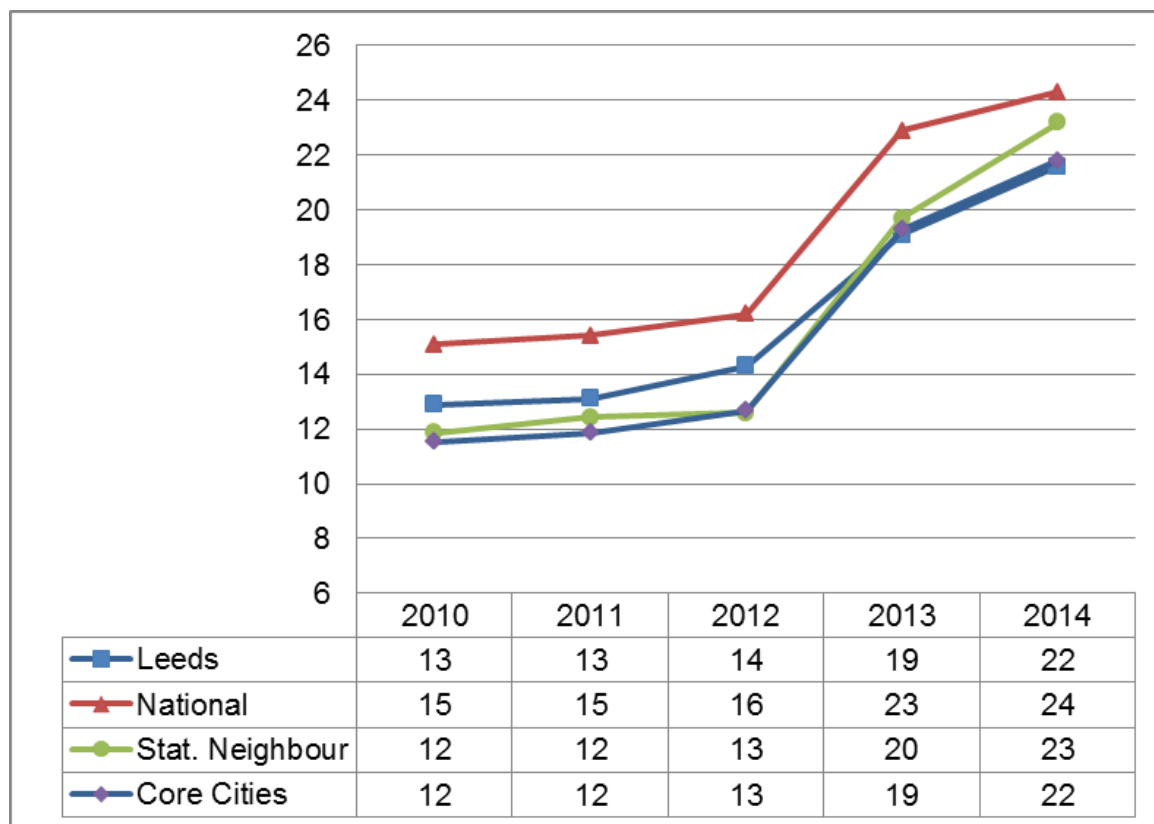
Data Status: Final

Data Source: DfE Statistical First Release SFR 02/2015

Data Notes:



2013-14, Key Stage 4 - Percentage of pupils achieving the English Baccalaureate



England Rank	94/151
--------------	--------

National Quartile Position	Change from last year
<div style="background-color: green; height: 15px; width: 100%;"></div> <div style="background-color: lightgreen; height: 15px; width: 100%;"></div> <div style="background-color: yellow; height: 15px; width: 100%; text-align: center;">3rd quartile</div> <div style="background-color: red; height: 15px; width: 100%;"></div>	<div style="text-align: center;"> <div style="background-color: green; width: 0; height: 0; border-left: 10px solid transparent; border-right: 10px solid transparent; border-bottom: 15px solid green; margin: 0 auto;"></div> <div>3% point</div> </div>

Key Issues: Please note it is not possible to compare 2013/14 results with previous years due to the reasons outlined in the Main text: SFR02/2015 which can be found here: https://www.gov.uk/government/uploads/system/uploads/attachment_data/file/399238/SFR_02_2015-revised_GCSE_and_equivalents.pdf. It is also important to note the statistical neighbour list for Leeds was revised in October 2014, therefore any comparisons should be made with caution.

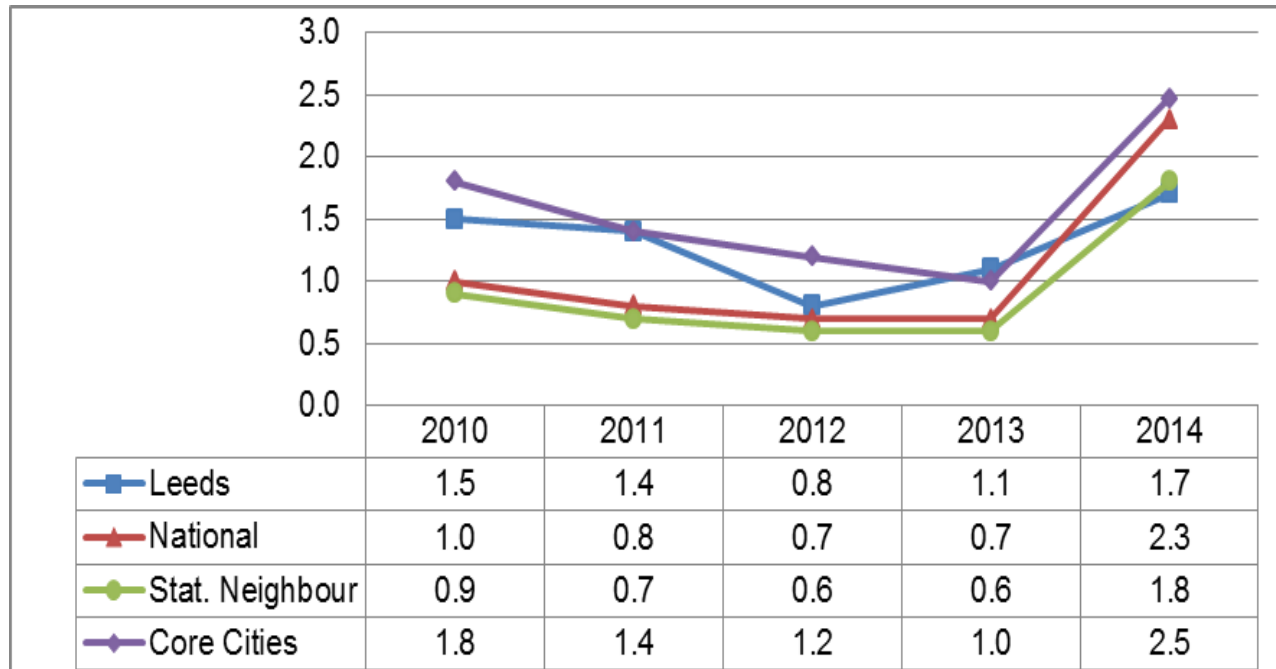
Data Status: Final

Data Source: DfE Statistical First Release SFR 02/2015

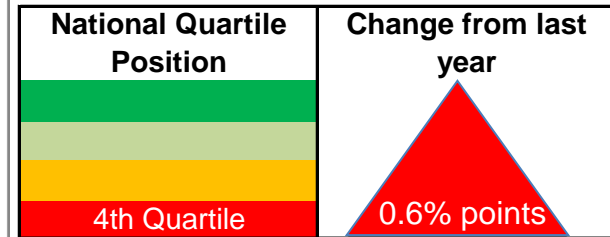
Data Notes: The EBacc, which was introduced in 2010, covers achievement in GCSE (or accredited iGCSE) English, mathematics, sciences, a language (including Latin, classical Greek or ancient Hebrew) and a humanities subject.



2013-14, Key Stage 4 - Percentage of no passes at GCSE



England Rank	equal 27/151
--------------	--------------



Key Issues: Please note it is not possible to compare 2013/14 results with previous years due to the reasons outlined in the Main text: SFR02/2015 which can be found here: https://www.gov.uk/government/uploads/system/uploads/attachment_data/file/399238/SFR_02_2015-revised_GCSE_and_equivalents.pdf. It is also important to note the statistical neighbour list for Leeds was revised in October 2014, therefore any comparisons should be made with caution.

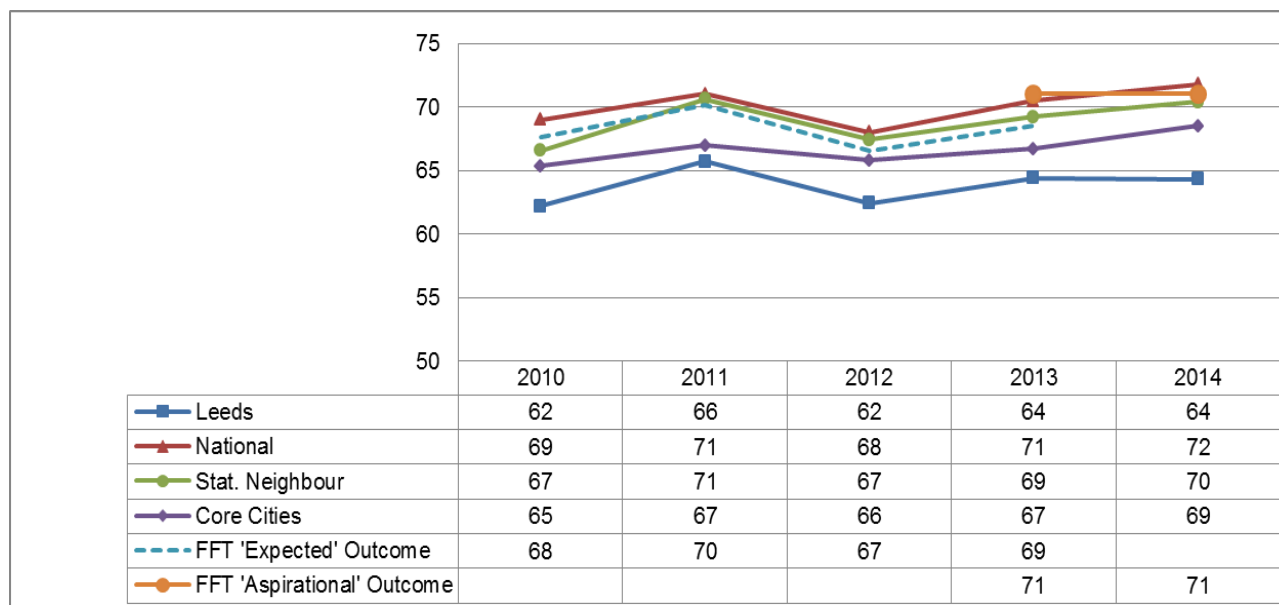
Data Status: Final

Data Source: DfE Statistical First Release SFR 02/2015

Data Notes: No data available for 2009.



2013-14 - Percentage of pupils making expected progress between Key Stage 2 and 4 in English



England Rank	137/151
--------------	---------

National Quartile Position	Change from last year
4th quartile	Static

Key Issues: Please note it is not possible to compare 2013/14 results with previous years due to the reasons outlined in the Main text: SFR02/2015 which can be found here: https://www.gov.uk/government/uploads/system/uploads/attachment_data/file/399238/SFR_02_2015-revised_GCSE_and_equivalents.pdf. It is also important to note the statistical neighbour list for Leeds was revised in October 2014, therefore any comparisons should be made with caution.

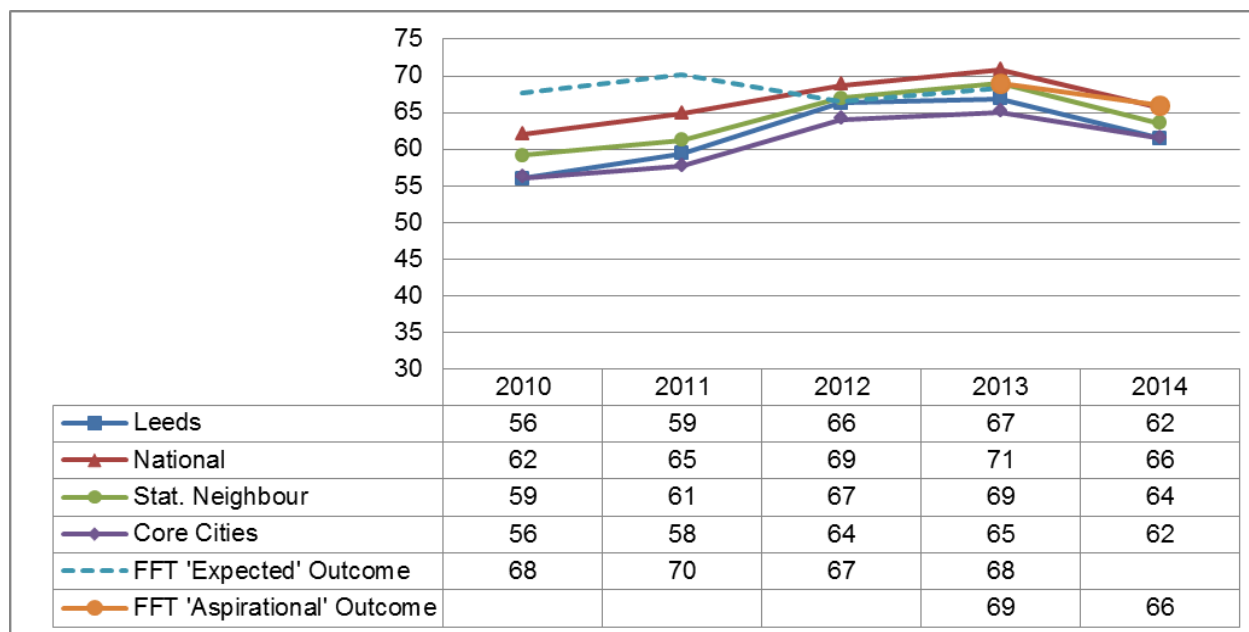
Data Status: Final

Data Source: DfE Statistical First Release SFR 02/2015

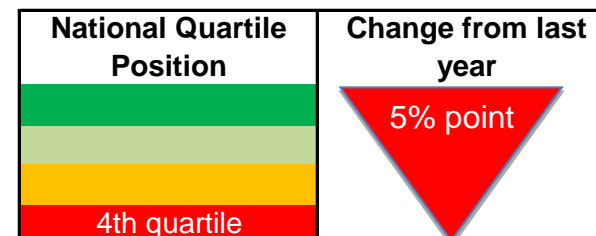
Data Notes:



2013-14 - Percentage of pupils making expected progress between Key Stage 2 and 4 in Maths



England Rank	equal 116/151
--------------	---------------



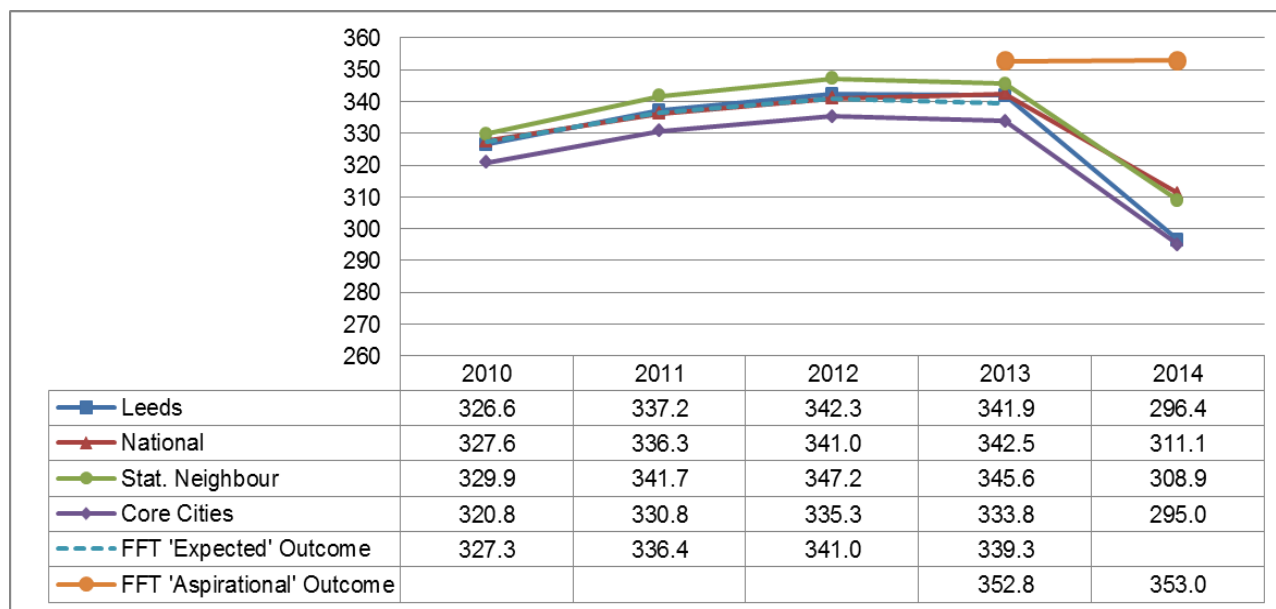
Key Issues: Please note it is not possible to compare 2013/14 results with previous years due to the reasons outlined in the Main text: SFR02/2015 which can be found here: https://www.gov.uk/government/uploads/system/uploads/attachment_data/file/399238/SFR_02_2015-revised_GCSE_and_equivalents.pdf. It is also important to note the statistical neighbour list for Leeds was revised in October 2014, therefore any comparisons should be made with caution.

Data Status: Final

Data Source: DfE Statistical First Release SFR 02/2015



2013-14 - Key Stage 4 Capped Average* Point Score Per Pupil



England Rank	126/151
--------------	---------

National Quartile Position	Change from last year
4th quartile	45.5% point

Key Issues: Please note it is not possible to compare 2013/14 results with previous years due to the reasons outlined in the Main text: SFR02/2015 which can be found here: https://www.gov.uk/government/uploads/system/uploads/attachment_data/file/399238/SFR_02_2015-revised_GCSE_and_equivalents.pdf. It is also important to note the statistical neighbour list for Leeds was revised in October 2014, therefore any comparisons should be made with caution.

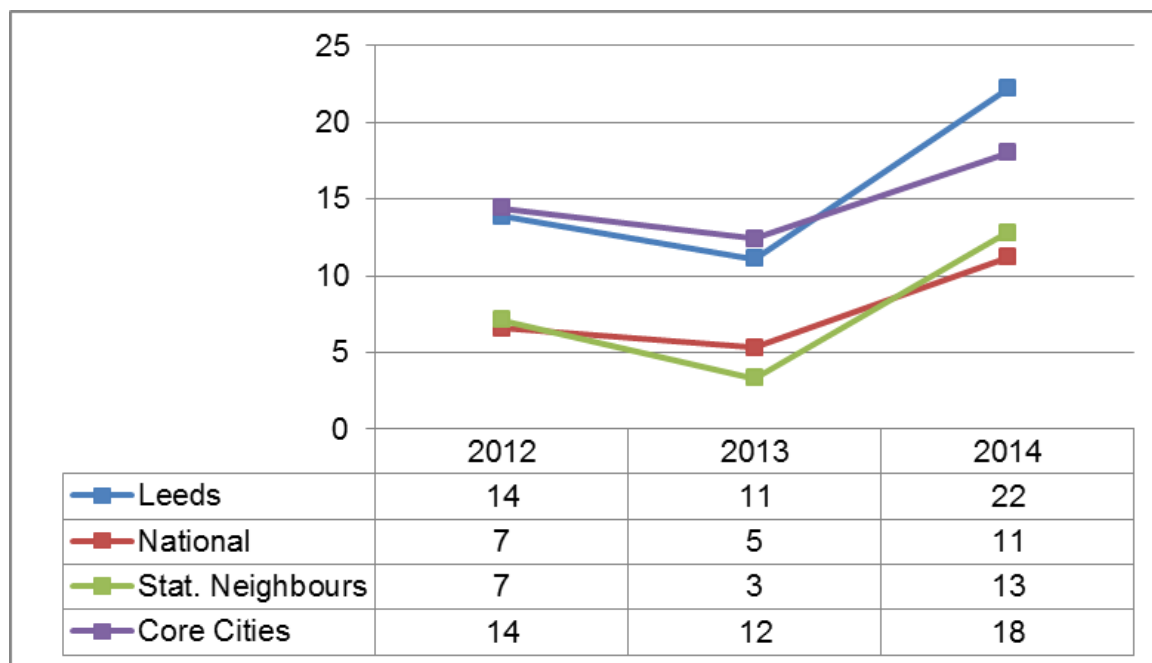
Data Status: Final

Data Source: DfE Statistical First Release SFR 02/2015

Data Notes: *Average capped point scores are calculated using the best 8 GCSE and equivalent results



2013-14, Key Stage 4 - Percentage of schools not reaching the floor standard*



England Rank	131/151
--------------	---------

Position	Change from last year
4th quartile	11% point

Key Issues: Please note it is not possible to compare 2013/14 results with previous years due to the reasons outlined in the Main text: SFR02/2015 which can be found here: https://www.gov.uk/government/uploads/system/uploads/attachment_data/file/399238/SFR_02_2015-revised_GCSE_and_equivalents.pdf. It is also important to note the statistical neighbour list for Leeds was revised in October 2014, therefore any comparisons should be made with caution.

Data Status: Final

Data Source: DfE Statistical First Release SFR 02/2015

Data Notes: * A school is below the floor standard if less than 40% of pupils achieve 5+A*-C including English and mathematics and the expected progress between KS2 and KS4 is less than the median of 73% (or 70% in 2012) in English and less than the median of 70% in mathematics. National includes those state-funded mainstream schools with results published in the relevant year's Secondary School Performance Tables. The standard excludes special schools, schools with fewer than 11 pupils and closed schools.

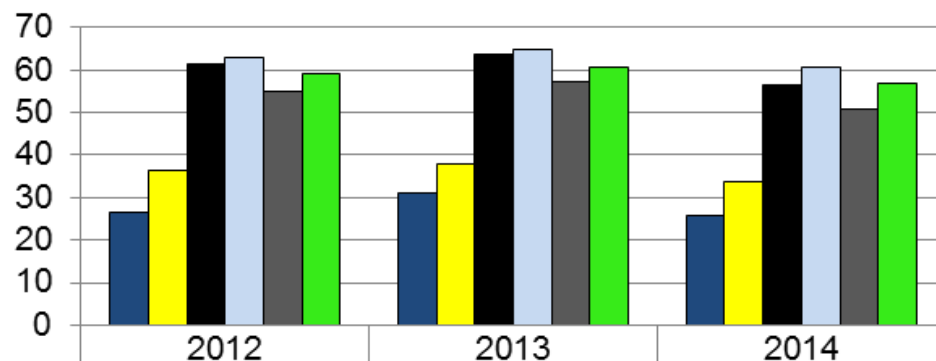


2013-14, Key Stage 4 - Learning Outcomes Dashboards - Pupil Groups

Dashboards	Changes Since Previous Version
Percentage of pupils achieving 5 A*-C at GCSE including English and Maths - FSM	New dashboard added
Percentage of pupils achieving 5 A*-C at GCSE including English and Maths - EAL	New dashboard added
Percentage of pupils achieving 5 A*-C at GCSE including English and Maths - SEN provision	New dashboard added
Percentage of pupils achieving 5 A*-C at GCSE including English and Maths - Ethnicity	New dashboard added
Percentage of pupils achieving 5 A*-C at GCSE including English and Maths - Gender	New dashboard added
Percentage of pupils achieving 5 A*-G at GCSE - FSM	New dashboard added
Percentage of pupils achieving 5 A*-G at GCSE - EAL	New dashboard added
Percentage of pupils achieving 5 A*-G at GCSE - SEN provision	New dashboard added
Percentage of pupils achieving 5 A*-G at GCSE - Ethnicity	New dashboard added
Percentage of pupils achieving 5 A*-G at GCSE - Gender	New dashboard added

Please note: A separate Dashboard has been produced for CLA

2013-14, Key Stage 4 - Percentage of pupils achieving 5 A*-C at GCSE including English and Maths - FSM



■ Leeds FSM	27	31	26
■ National FSM	37	38	34
■ Leeds Non FSM	61	64	57
■ National Non FSM	63	65	61
■ Leeds All	55	57	51
■ National All	59	61	57

England Rank	131/150
--------------	---------

National Quartile Position	Change from last year
4th quartile	5% points

Please note it is not possible to compare 2013/14 results with previous years due to the reasons outlined in the Main text: SFR02/2015 which can be found here: https://www.gov.uk/government/uploads/system/uploads/attachment_data/file/399238/SFR_02_2015-revised_GCSE_and_equivalents.pdf.

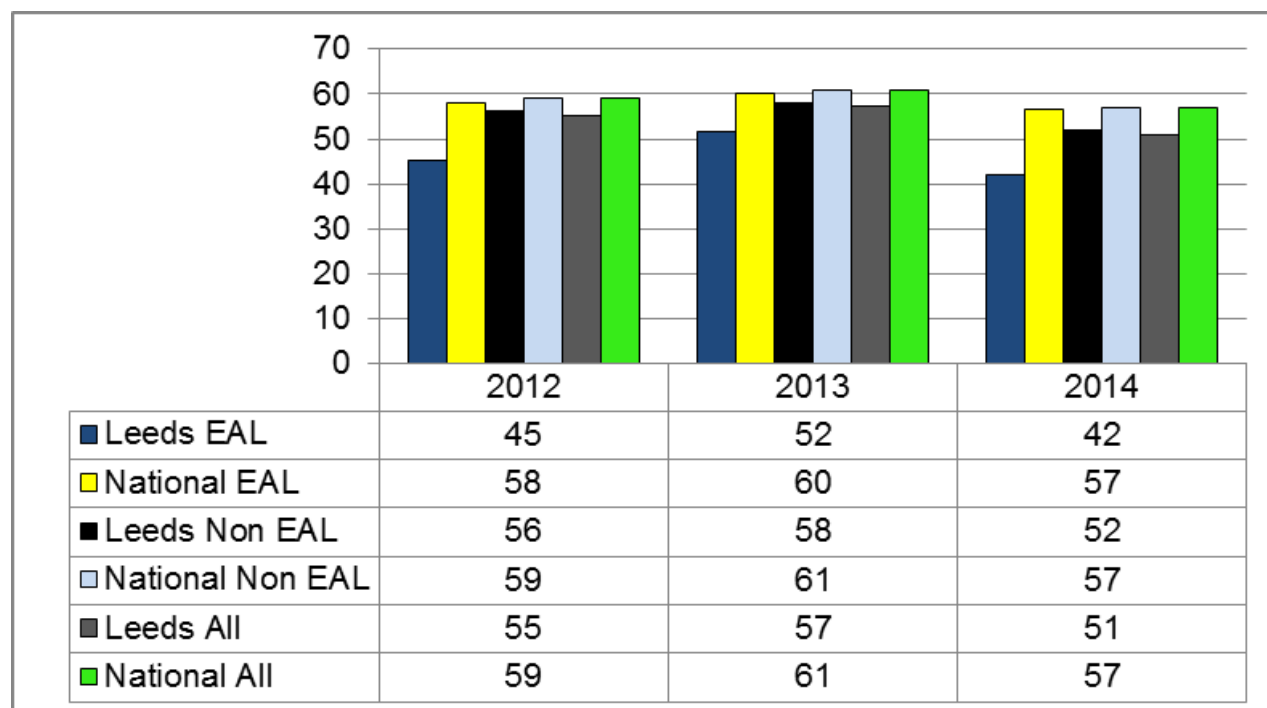
Data Status: Final

Data Source: DfE Statistical First Release SFR06/2015

Data Notes:



2013-14, Key Stage 4 - Percentage of pupils achieving 5 A*-C at GCSE including English and Maths - English as an additional language (EAL)



England Rank	137/146
--------------	---------

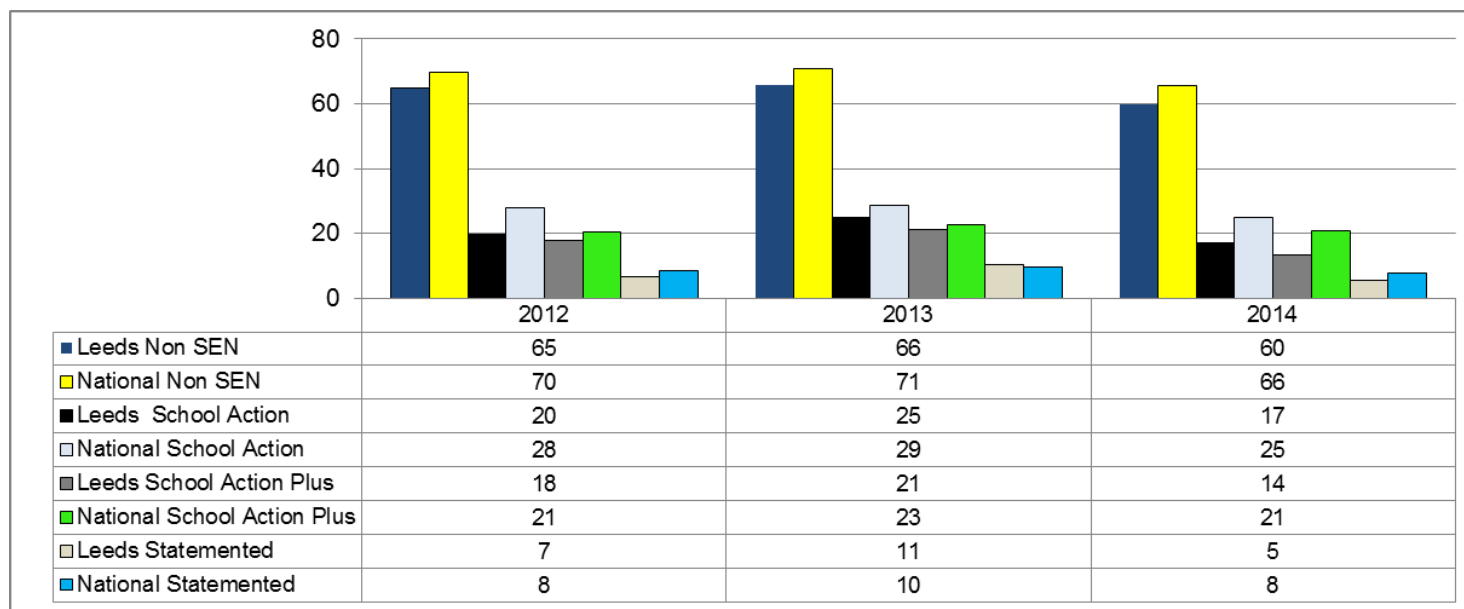
National Quartile Position	Change from last year

Please note it is not possible to compare 2013/14 results with previous years due to the reasons outlined in the Main text: SFR02/2015 which can be found here: https://www.gov.uk/government/uploads/system/uploads/attachment_data/file/399238/SFR_02_2015-revised_GCSE_and_equivalents.pdf.

Data Status: Final
Data Source: DfE Statistical First Release SFR06/2015
Data Notes:



2013-14, Key Stage 4 - Percentage of pupils achieving 5 A*-C at GCSE including English and Maths - SEN provision



	England Rank	National Quartile Position	Change from last year
Non SEN	128/151	4th quartile	6% point ↓
School Action	Equal 121/144	3rd quartile	8% point ↓
School Action Plus	132/114	3rd quartile	7% point ↓
Statemented	101/129	4th quartile	6% point ↓

Please note it is not possible to compare 2013/14 results with previous years due to the reasons outlined in the Main text: SFR02/2015 which can be found here: https://www.gov.uk/government/uploads/system/uploads/attachment_data/file/399238/SFR_02_2015-revised_GCSE_and_equivalents.pdf.

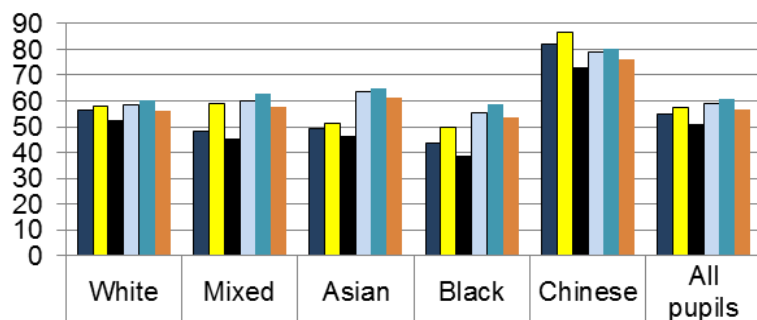
Data Status: Final

Data Source: DfE Statistical First Release SFR06/2015

Data Notes:



2013-14, Key Stage 4 - Percentage of pupils achieving 5 A*-C at GCSE including English and Maths - Ethnicity



	White	Mixed	Asian	Black	Chinese	All pupils
Leeds 2012	57	48	49	43	82	55
Leeds 2013	58	59	51	50	87	57
Leeds 2014	52	45	46	39	73	51
National 2012	59	60	63	55	79	59
National 2013	60	63	65	59	80	61
National 2014	56	58	62	54	76	57

	England Rank	National Quartile Position	Change from last year
White	Equal 113/149	4th quartile	6% point ↓
Mixed	137/145	4th quartile	14% point ↓
Asian	136/142	4th quartile	5% point ↓
Black	Equal 120/131	4th quartile	11% point ↓
Chinese	Equal 34/77	2nd quartile	14% point ↓

Please note it is not possible to compare 2013/14 results with previous years due to the reasons outlined in the Main text: SFR02/2015 which can be found here: https://www.gov.uk/government/uploads/system/uploads/attachment_data/file/399238/SFR_02_2015-revised_GCSE_and_equivalents.pdf.

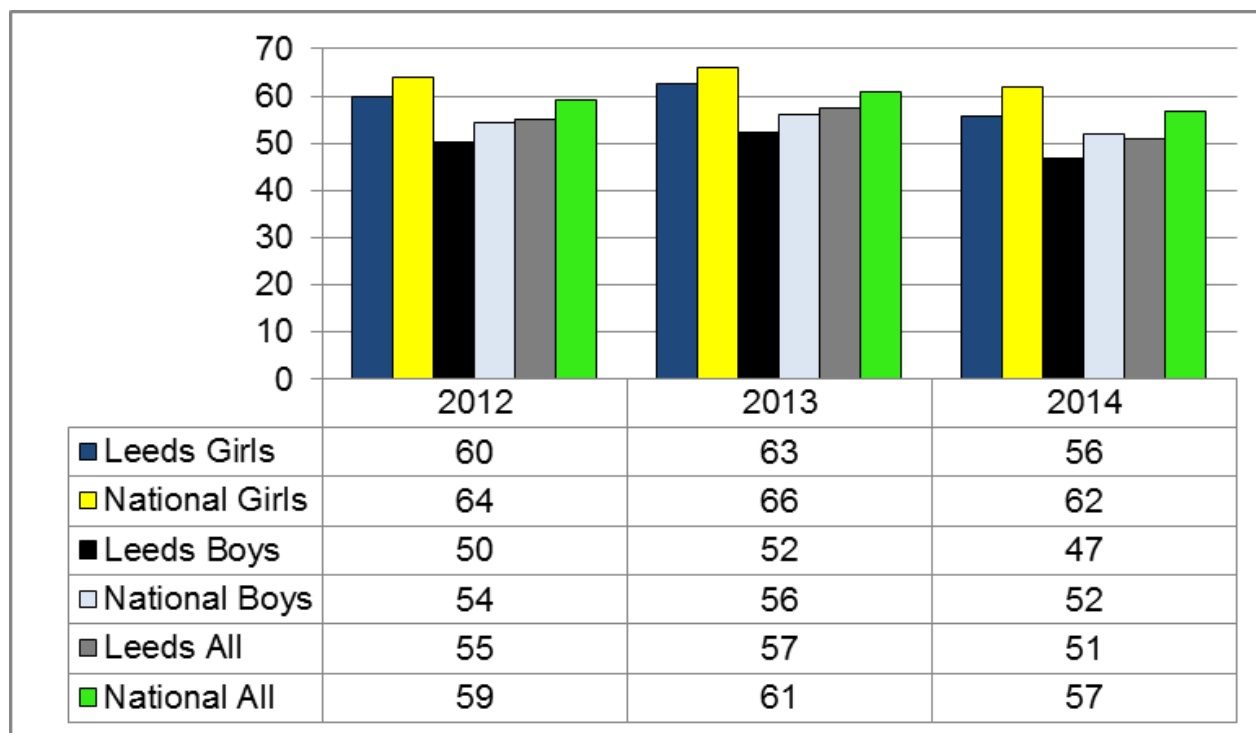
Data Status: Final

Data Source: DfE Statistical First Release SFR 06/2015

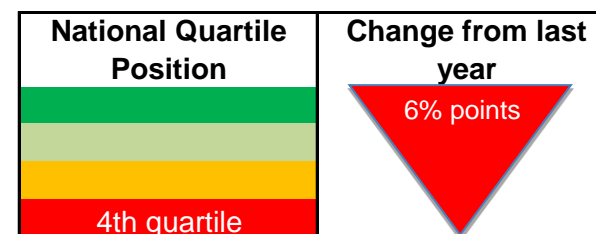
Data Notes: For a more detailed breakdown of ethnicity groups please look at the report functions on RaiseOnline LA populated.



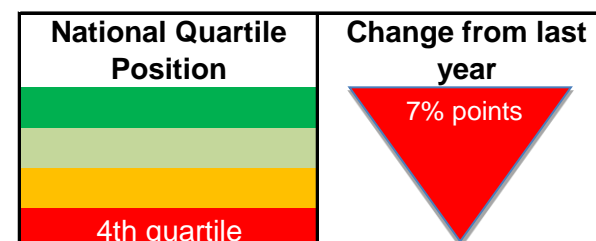
2013-14, Key Stage 4 - Percentage of pupils achieving 5 A*-C at GCSE including English and Maths - Gender



England Rank - Boys Equal 125/150



England Rank - Girls 129/149



Please note it is not possible to compare 2013/14 results with previous years due to the reasons outlined in the Main text: SFR02/2015 which can be found here: https://www.gov.uk/government/uploads/system/uploads/attachment_data/file/399238/SFR_02_2015-revised_GCSE_and_equivalents.pdf.

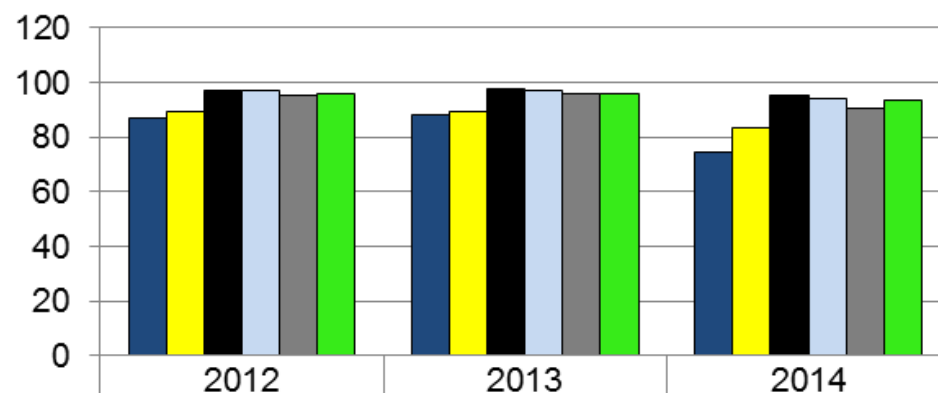
Data Status: Final

Data Source: DfE Statistical First Release SFR SFR06/2015

Data Notes:



2013-14, Key Stage 4 - Percentage of pupils achieving 5 A*-G at GCSE - FSM



	2012	2013	2014
■ Leeds FSM	87	88	75
■ National FSM	89	90	83
■ Leeds Non FSM	97	98	95
■ National Non FSM	97	97	94
■ Leeds All	95	96	90
■ National All	96	96	94

England Rank	143/150
--------------	---------

National Quartile Position	Change from last year
4th Quartile	13% points

Please note it is not possible to compare 2013/14 results with previous years due to the reasons outlined in the Main text: SFR02/2015 which can be found here: https://www.gov.uk/government/uploads/system/uploads/attachment_data/file/399238/SFR_02_2015-revised_GCSE_and_equivalents.pdf.

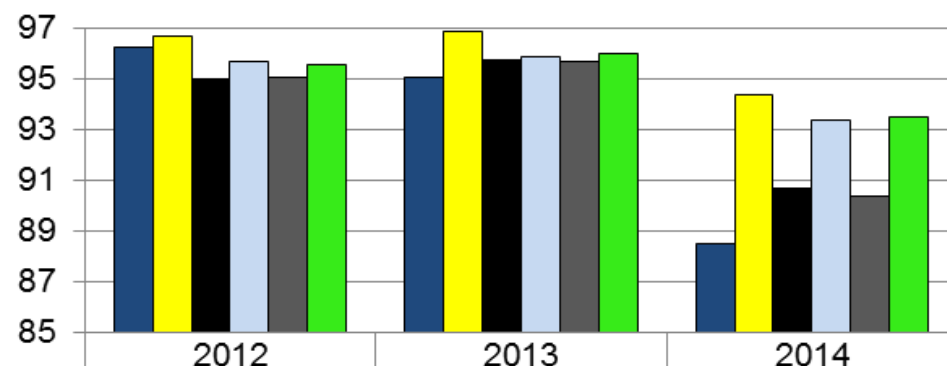
Data Status: Final

Data Source: DfE Statistical First Release SFR06/2015

Data Notes:



2013-14, Key Stage 4 - Percentage of pupils achieving 5 A*-G at GCSE - English as an additional language (EAL)



	2012	2013	2014
Leeds EAL	96	95	89
National EAL	97	97	94
Leeds Non EAL	95	96	91
National Non EAL	96	96	93
Leeds All	95	96	90
National All	96	96	94

England Rank	130/138
--------------	---------

National Quartile Position	Change from last year
<div> <div></div> <div></div> <div></div> <div>4th quartile</div> </div>	<div>6% point</div>

Please note it is not possible to compare 2013/14 results with previous years due to the reasons outlined in the Main text: SFR02/2015 which can be found here: https://www.gov.uk/government/uploads/system/uploads/attachment_data/file/399238/SFR_02_2015-revised_GCSE_and_equivalents.pdf.

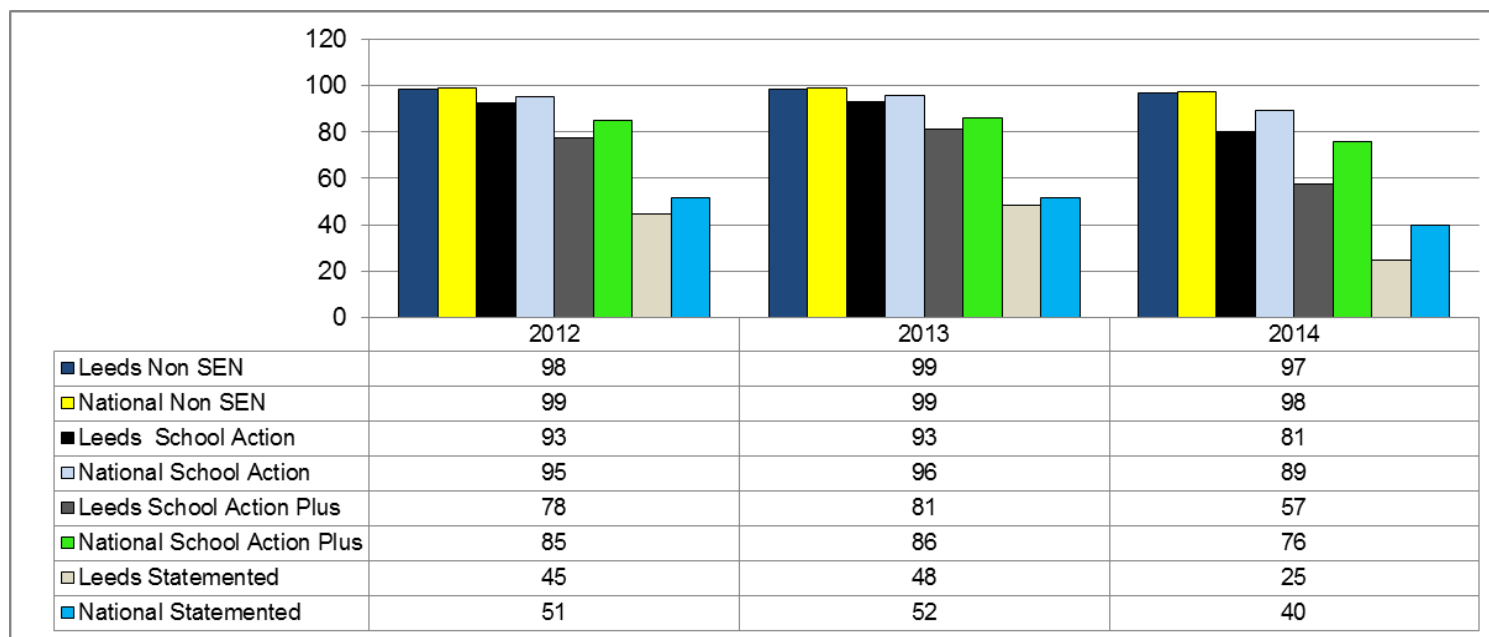
Data Status: Final

Data Source: DfE Statistical First Release SFR06/2015

Data Notes:



2013-14, Key Stage 4 - Percentage of pupils achieving 5 A*-G at GCSE - SEN provision



	England Rank	National Quartile Position	Change from last year
Non SEN	127/149	4th quartile	2% points ↓
School Action	139/146	4th quartile	13% points ↓
School Action Plus	140/144	4th quartile	24% points ↓
Statemented	137/147	4th quartile	24% points ↓

Please note it is not possible to compare 2013/14 results with previous years due to the reasons outlined in the Main text: SFR02/2015 which can be found here: https://www.gov.uk/government/uploads/system/uploads/attachment_data/file/399238/SFR_02_2015-revised_GCSE_and_equivalents.pdf.

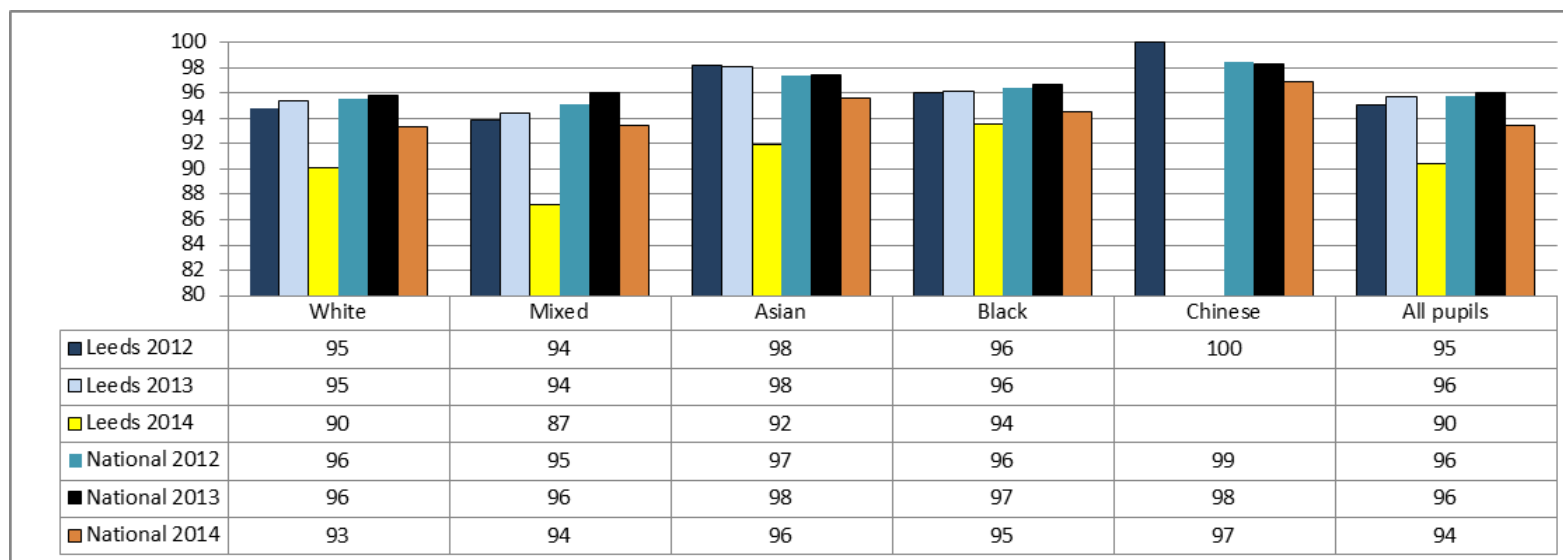
Data Status: Final

Data Source: DfE Statistical First Release SFR06/2015

Data Notes:



2013-14, Key Stage 4 - Percentage of pupils achieving 5 A*-G at GCSE



	England Rank	National Quartile Position	Change from last year
White	136/149	4th quartile	5% points
Mixed	Equal 113/120	4th quartile	7% points
Asian	Equal 110/122	4th quartile	6% points
Black	65/104	3rd quartile	3% points
Chinese	Data suppressed	Data suppressed	Data suppressed

Please note it is not possible to compare 2013/14 results with previous years due to the reasons outlined in the Main text: SFR02/2015 which can be found here: https://www.gov.uk/government/uploads/system/uploads/attachment_data/file/399238/SFR_02_2015-revised_GCSE_and_equivalents.pdf.

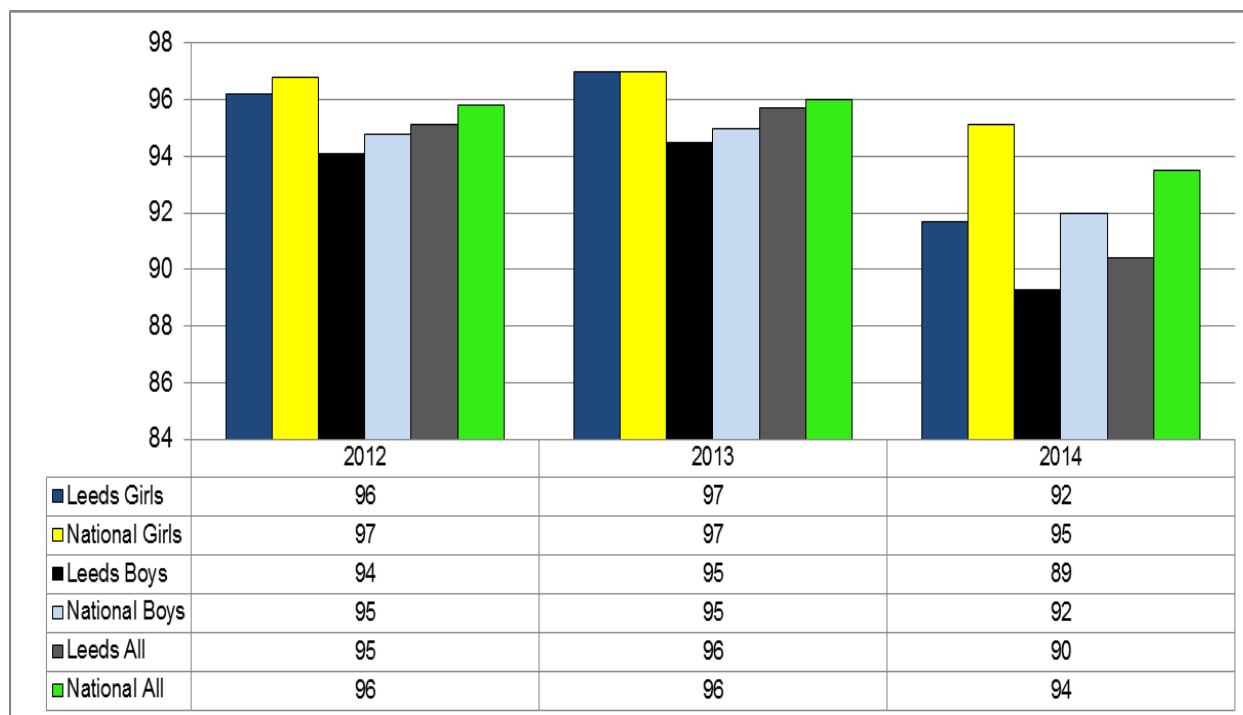
Data Status: Final

Data Source: DfE Statistical First Release SFR06/2015

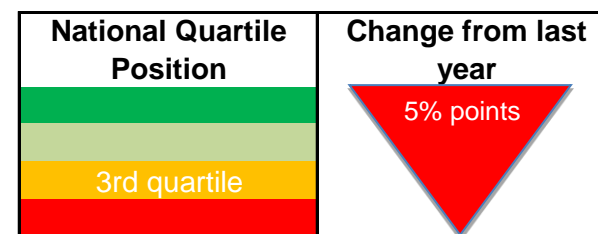
Data Notes: Please note 2013 and 2014 data for Chinese pupils is suppressed.



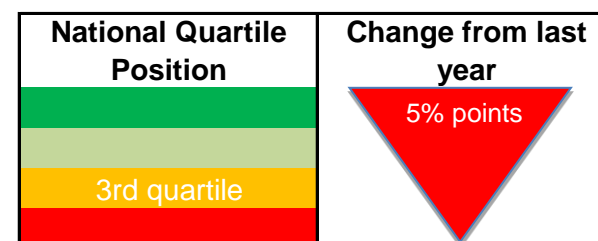
2013-14, Key Stage 4 - Percentage of pupils achieving 5 A*-G at GCSE - Gender



England Rank Boys Equal 130/152



England Rank Girls Equal 145/152



Please note it is not possible to compare 2013/14 results with previous years due to the reasons outlined in the Main text: SFR02/2015 which can be found here: https://www.gov.uk/government/uploads/system/uploads/attachment_data/file/399238/SFR_02_2015-revised_GCSE_and_equivalents.pdf.

Data Status: Final

Data Source: DfE Statistical First Release SFR06/2015

Data Notes:

