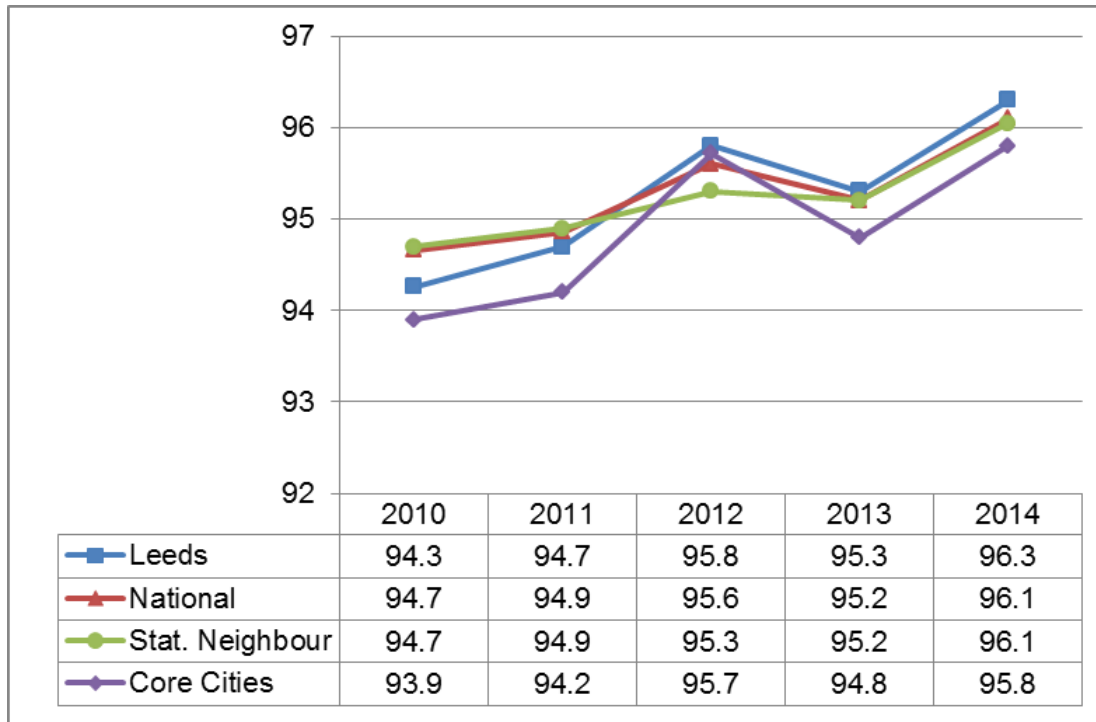


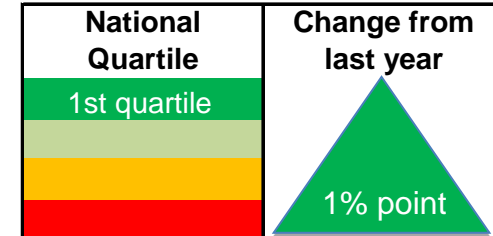
2013-14, Primary Attendance - Learning Outcomes Dashboards, half terms 1 - 4

<b>Dashboards</b>	<b>Changes Since Previous Version</b>
Percentage attendance in primary schools	New dashboard added
Percentage authorised absence in primary schools	New dashboard added
Percentage unauthorised absence in primary schools	New dashboard added
Percentage persistent absentees in primary schools	New dashboard added

## 2013-14, Percentage attendance in primary schools - half terms 1-4



England Rank	Equal 30/151
--------------	--------------



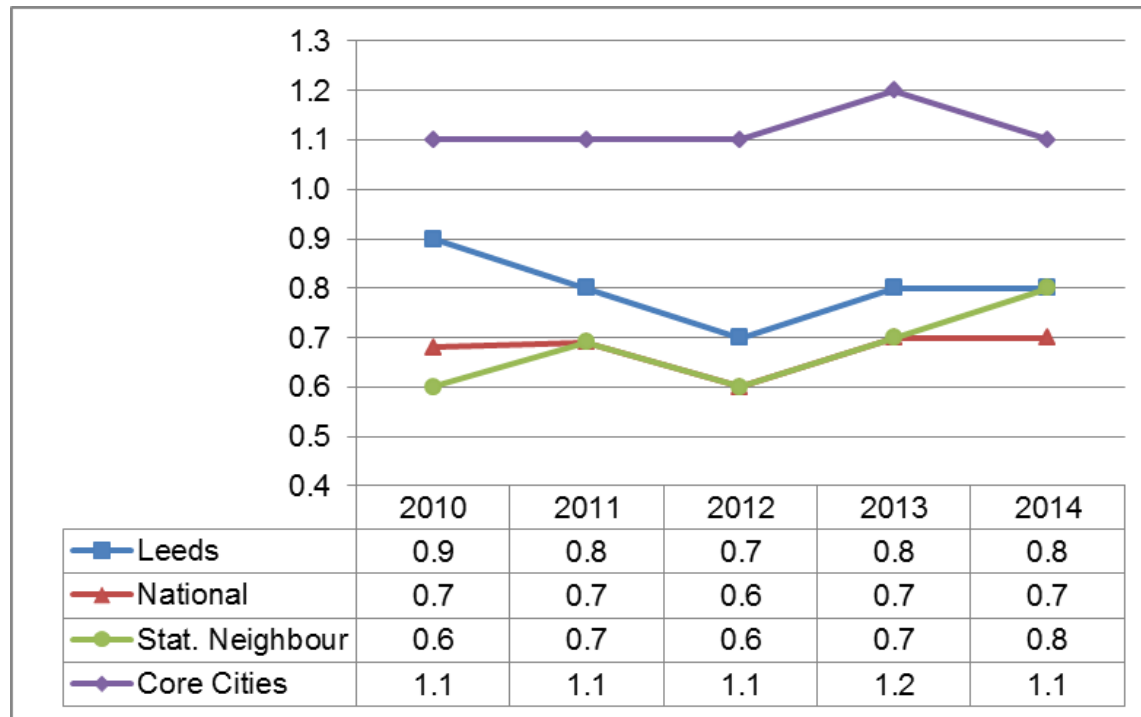
**Key Issues:** Attendance in Leeds primary schools has increased by one percentage point in 2013/14, after a decrease in 2012/13. Attendance in Leeds primary schools is above national, statistical neighbour and core cities average. Please note the statistical neighbour list for Leeds was revised in October 2014, therefore any comparisons should be made with caution.

Data Status: Final  
Data Source: DfE Statistical First Release SFR38/2014

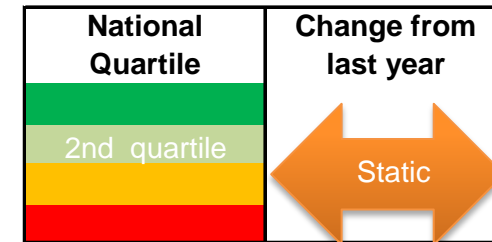
Data Notes: Half terms 1-4



## 2013-14, Percentage unauthorised absence in primary schools - half terms 1-4



England Rank	equal 55/151
--------------	--------------

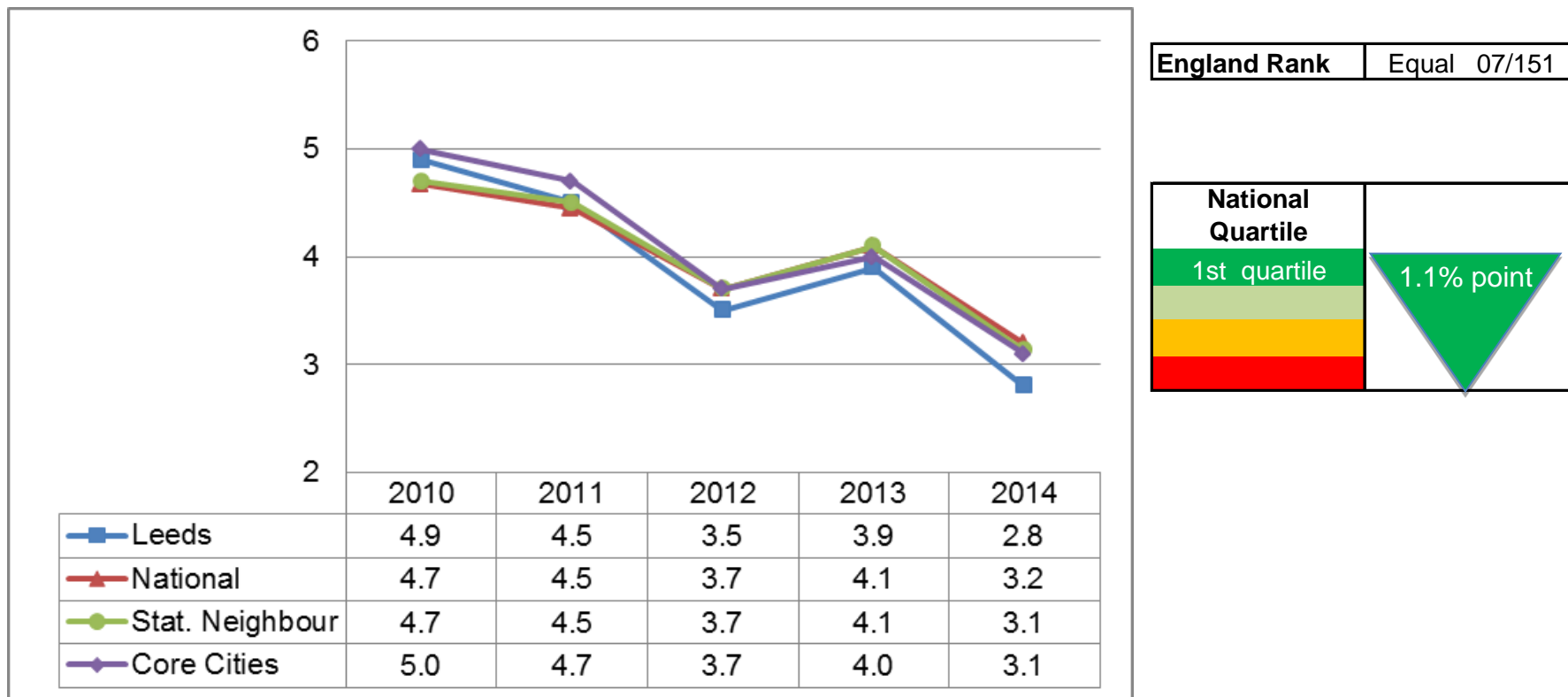


**Key Issues:** Unauthorised absence has remained static in 2013/14 in Leeds and nationally. Levels of unauthorised absence remain higher in Leeds than nationally, but are inline with statistical neighbours, and significantly lower than core cities. Please note the statistical neighbour list for Leeds was revised in October 2014, therefore any comparisons should be made with caution.

Data Status: Final  
 Data Source: DfE Statistical First Release SFR38/2014  
 Data Notes: Half terms 1-4



## 2013-14, Percentage authorised absence in primary schools - half terms 1-4

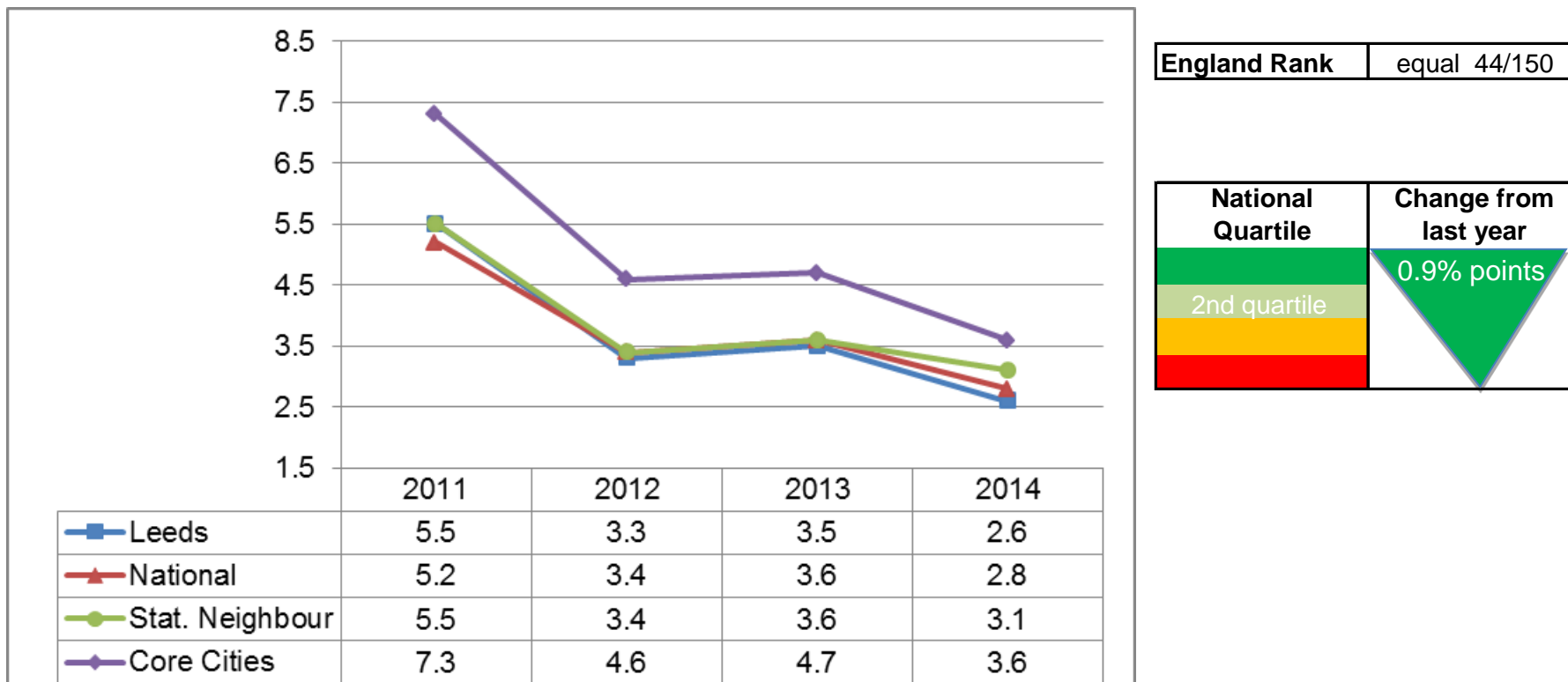


**Key Issues:** Authorised absence fell by 1.1 percentage points in 2013/14. A similar level of decrease was seen nationally, by statistical neighbours and core cities 0.9 and 0.8 percentage points. Please note the statistical neighbour list for Leeds was revised in October 2014, therefore any comparisons should be made with caution.

Data Status: Final  
 Data Source: DfE Statistical First Release SFR38/2014  
 Data Notes: Half terms 1-4



## 2013-14, Percentage persistent absentees in primary schools - half terms 1-4



**Key Issues:** The percentage of pupils that met this threshold in 2013/14 in Leeds primary schools was 2.6 per cent, which is lower than in 2012/13. Levels of persistent absence in primary schools in Leeds remained lower than levels of persistent absence nationally, in statistical neighbours and core cities. Please note the statistical neighbour list for Leeds was revised in October 2014, therefore any comparisons should be made with caution.

Data Status: Final

Data Source: DfE Statistical First Release SFR38/2014

Data Notes: Persistent Absentees are defined as having an overall absence rate of around 15 per cent or more. This equates to 46 or more sessions of absence (authorised and unauthorised) during the year.

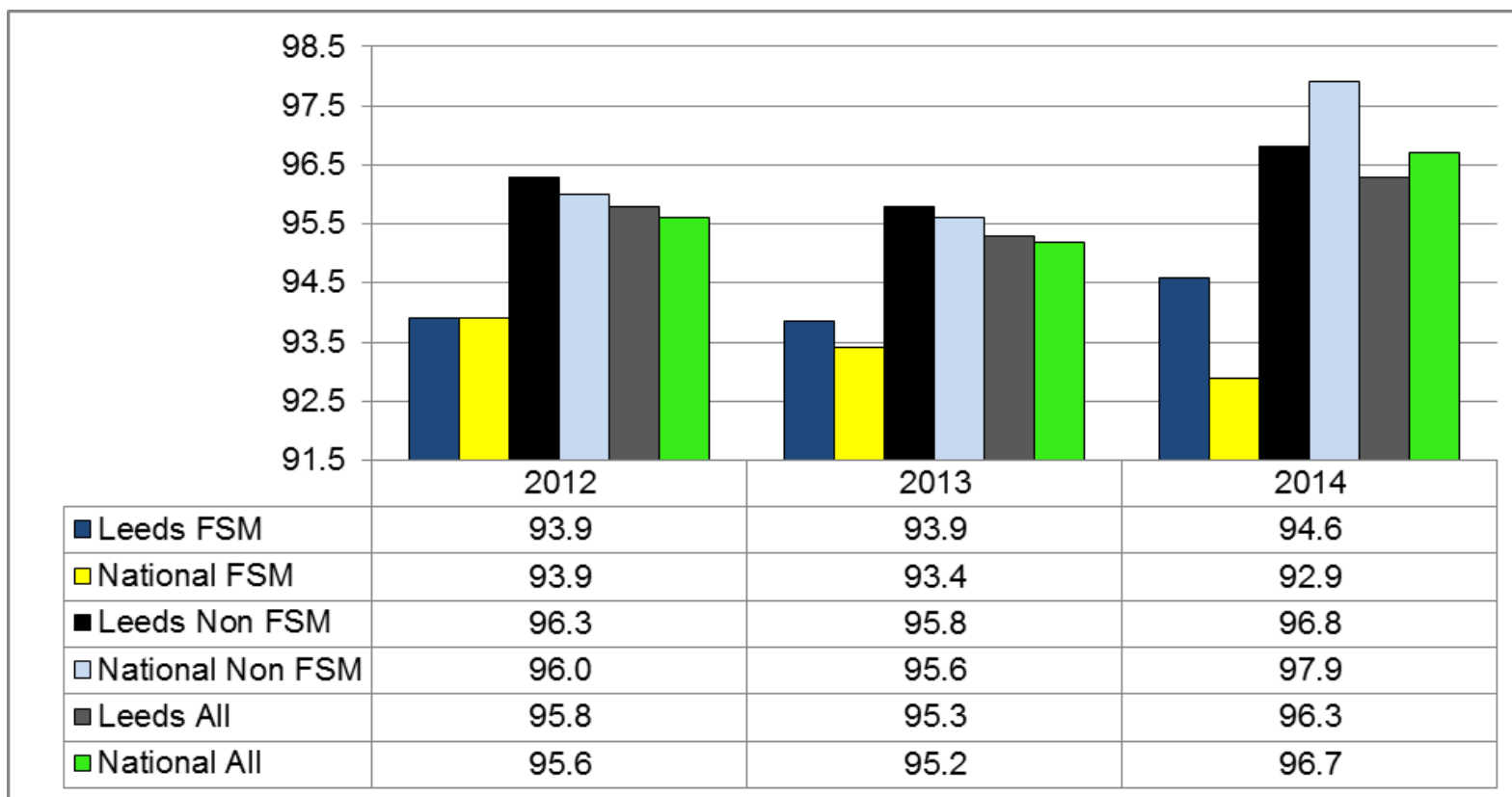
Half terms 1-4.



## 2013-14, Primary Attendance - Learning Outcomes Dashboards - Pupil Groups, half terms 1-4

<b>Dashboard</b>	<b>Changes Since Previous Version</b>
Percentage attendance in primary schools - Free School Meals (FSM)	New dashboard added
Percentage attendance in primary schools - EAL	New dashboard added
Percentage attendance in primary schools - SEN	New dashboard added
Percentage attendance in primary schools - Ethnicity	New dashboard added
Percentage attendance in primary schools - Gender	New dashboard added
Percentage attendance in primary schools - CLA	New dashboard added
Percentage attendance in primary schools - Year Group	New dashboard added

## 2013-14, Percentage attendance in primary schools, half terms 1-4 - Free School Meals (FSM)



Change from last year  
0.7% points

**Key Issues** :Attendance for pupils on free school meals has increased by 0.7 percentage points putting Leeds above the national average by 1.7 percentage points.

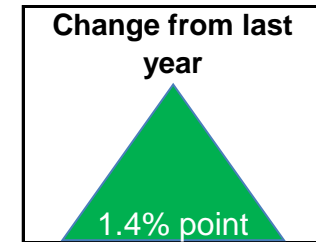
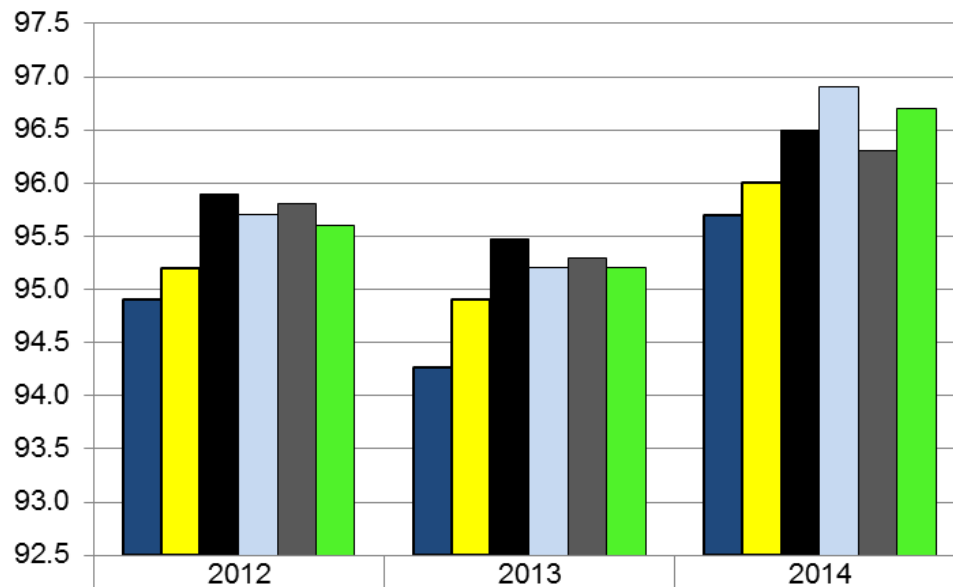
Data Status: Final

Data Source: Leeds data - local; national - DfE Statistical First Release SFR38/2014

Data Notes: As local data has been used there is no ranking or national quartile analysis for this dashboard.



## 2013-14, Percentage attendance in primary schools, half terms 1-4- English as an additional language (EAL)



■ Leeds EAL	94.9	94.3	95.7
■ National EAL	95.2	94.9	96.0
■ Leeds Non EAL	95.9	95.5	96.5
■ National Non EAL	95.7	95.2	96.9
■ Leeds All	95.8	95.3	96.3
■ National All	95.6	95.2	96.7

**Key Issues:** Attendance for pupils who have EAL has increased by 1.4 percentage point to 95.7 per cent in 2014, however this is below the national average of 96.0 percentage points.

Data Status: Final

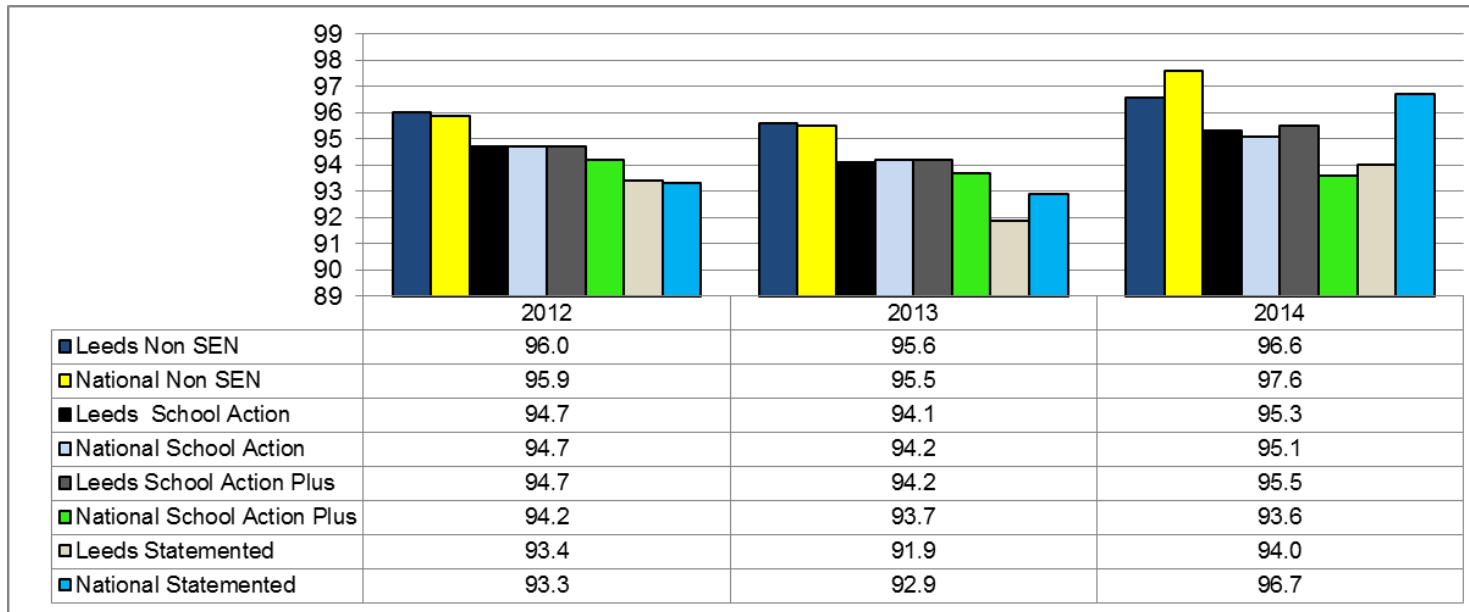
Data Source: Leeds data - local; national - DfE Statistical First Release SFR38/2014

Data Notes: As local data has been used there is no ranking or national quartile analysis for this dashboard.





## 2013-14, Percentage attendance in primary schools, half terms 1-4 - SEN



	Change from last year
Non SEN	1% point ▲
School Action	1.2% point ▲
School Action Plus	1.3% point ▲
Statemented	2.1% point ▲

**Key Issues:** In Leeds attendance has improved across all groups with the biggest improvement in the Statemented category, which has increased by 2.1 percentage points. Leeds is above the national average in the following categories: school action and school action plus.

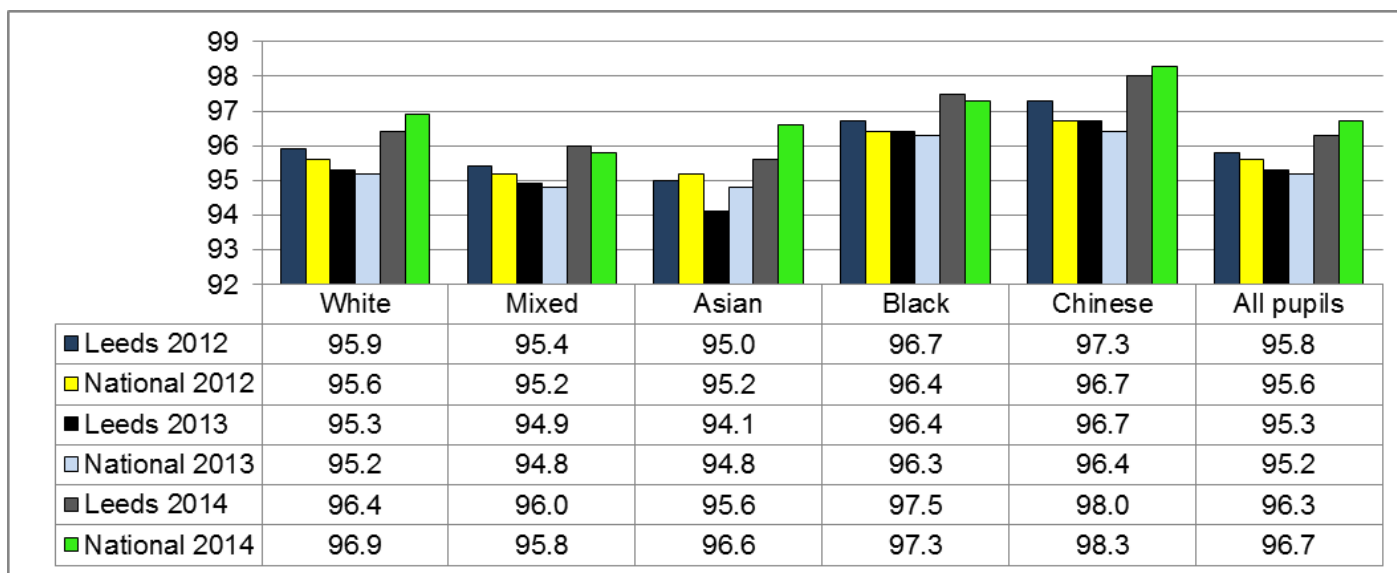
Data Status: Final

Data Source: Leeds data - local; national - DfE Statistical First Release SFR38/2014

Data Notes: As local data has been used there is no ranking or national quartile analysis for this dashboard.



## 2013-14, Percentage authorised absence in primary schools, half terms 1-4 - Ethnicity



	Change from last year
White	1.1% point ▲
Mixed	1.1% point ▲
Asian	1.5% point ▲
Black	1.1% point ▲
Chinese	1.3% point ▲

**Key Issues:** Attendance has improved across all groups, this mirrors the national trend. In Leeds the biggest increase can be seen amongst Asian pupils 1.5 percentage points.

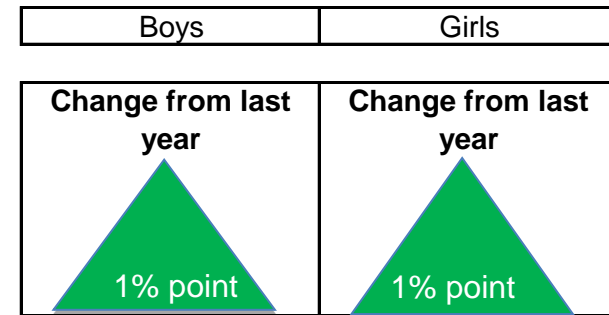
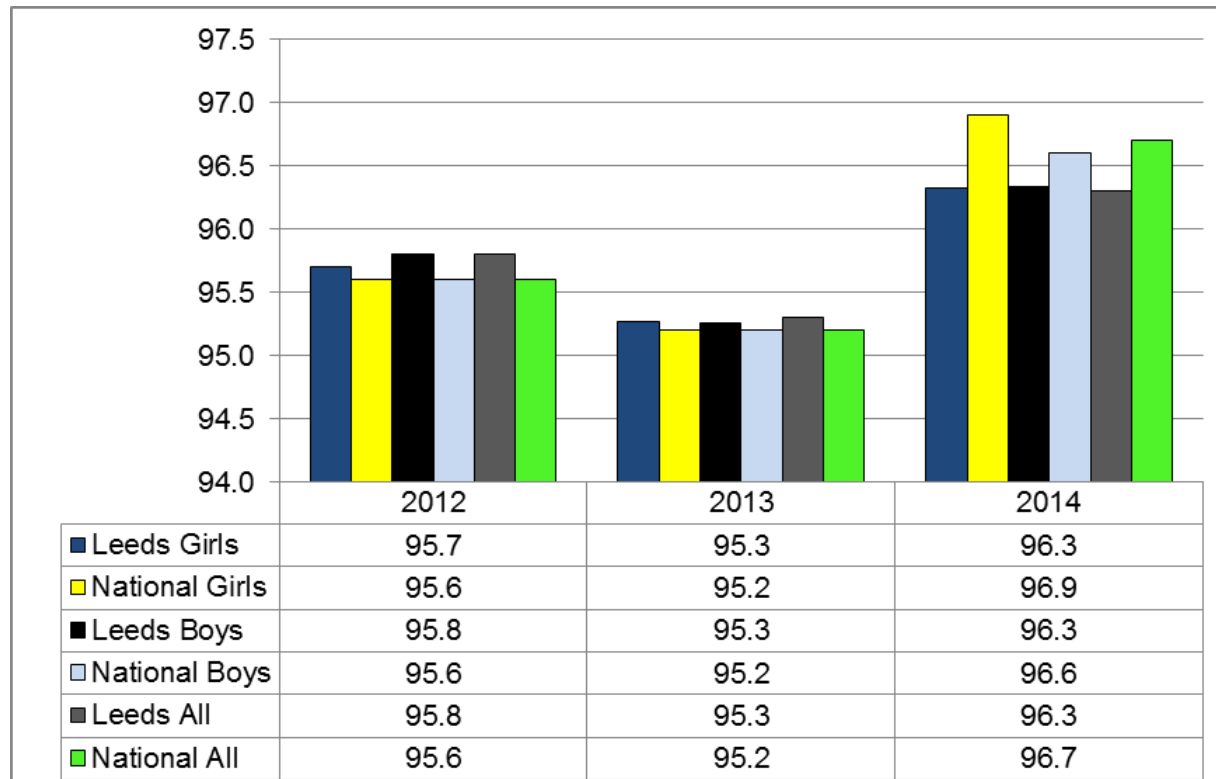
Data Status: Final

Data Source: Leeds data - local; national - DfE Statistical First Release SFR38/2014

Data Notes: As local data has been used there is no ranking or national quartile analysis for this dashboard.



## 2013-14 Percentage attendance in primary schools, half terms 1-4 - Gender



Key Issues: Girls and boys attendance remains the same and has improved by 1.1 percentage point for both groups. Attendance for both boys and girls is below the national average 96.6% and 96.9%.

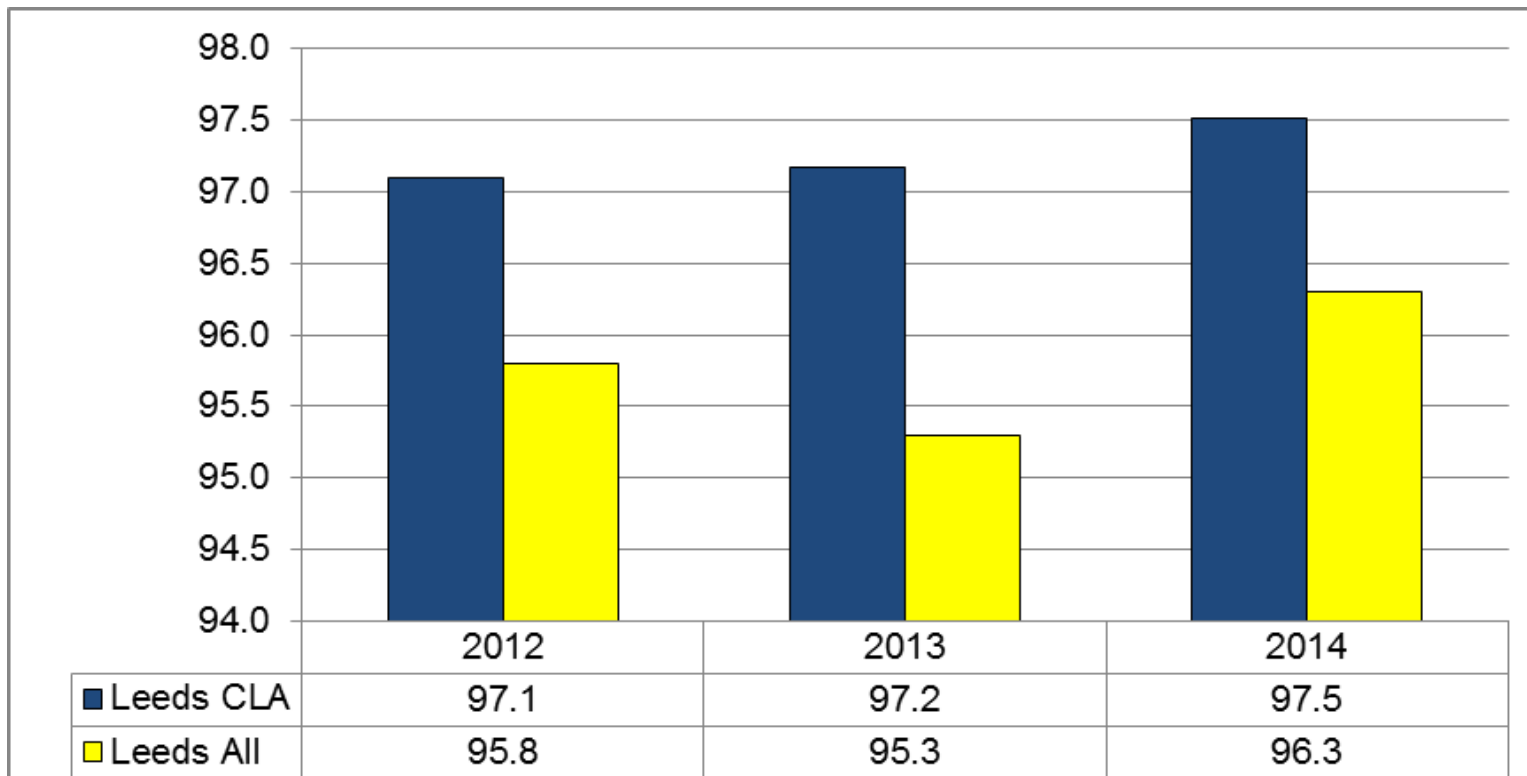
Data Status: Final

Data Source: Leeds data - local; national - DfE Statistical First Release SFR38/2014

Data Notes: As local data has been used there is no ranking or national quartile analysis for this dashboard.



## 2013-14 Percentage attendance in primary schools, half terms 1-4 - CLA



Change from last year  
0.3% point

**Key Issues:** Attendance for CLA has improved by 0.3 percentage points and remains above the Leeds all figure of 96.3 per cent.

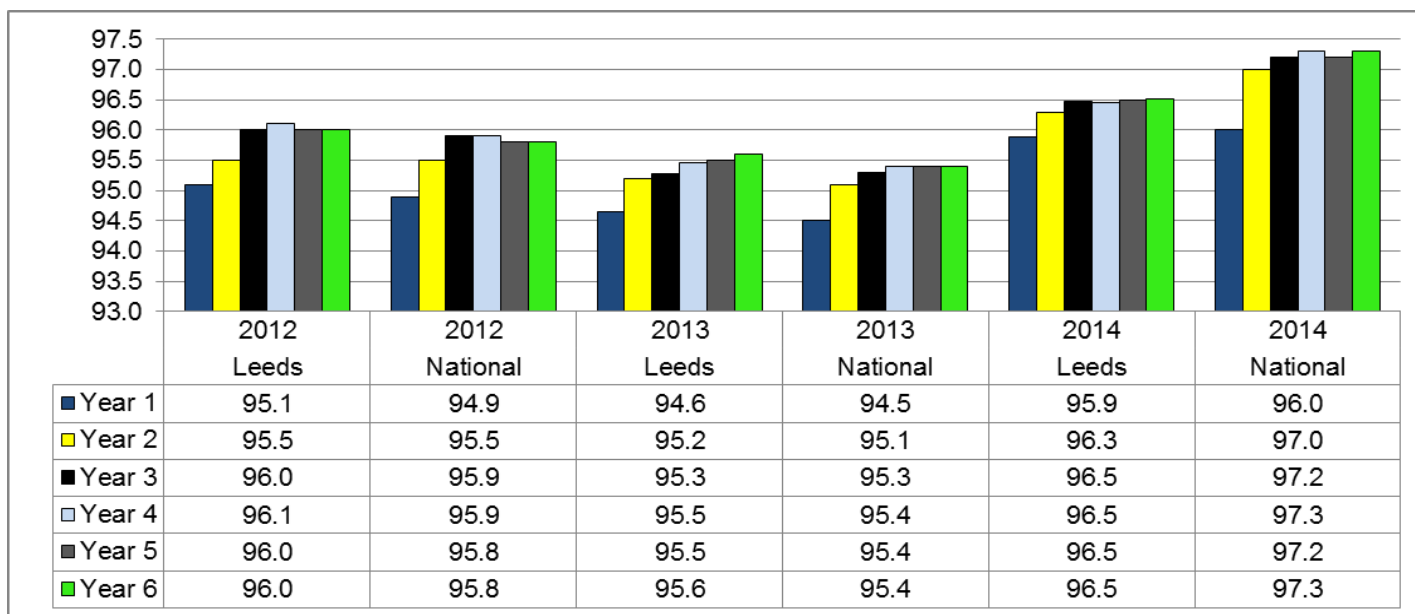
Data Status: Final

Data Source: Leeds all data - local mainstream schools only

Data Notes: There is no national breakdown of primary and secondary attendance for CLA and as local data has been used there is no ranking or national quartile analysis for this dashboard.



## 2013-14 Percentage attendance in primary schools, half terms 1-4 - year group



Change from last year	
Year 1	1.2% point ▲
Year 2	1.1% point ▲
Year 3	1.2% point ▲
Year 4	1% point ▲
Year 5	1% point ▲
Year 6	0.9% point ▲

**Key Issues:** Attendance has increased across all year groups, with the biggest increase in year 1 and year 3 (1.2 percentage points. Nationally attendance has increased across all year groups with the largest increase in years 2, 3, 4 and 6 (1.9 percentage point across each year group).

Data Status: Final

Data Source: Leeds data - local; national - DfE Statistical First Release SFR38/2014

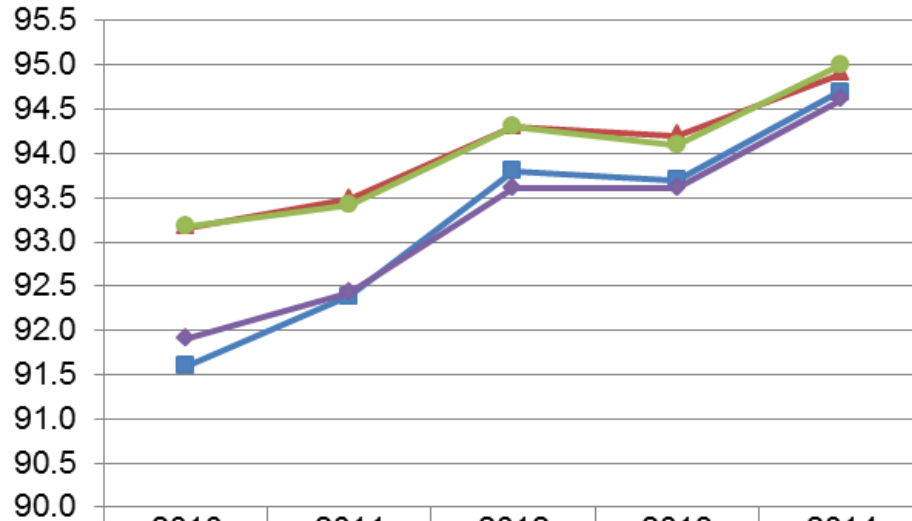
Data Notes: As local data has been used there is no ranking or national quartile analysis for this dashboard.



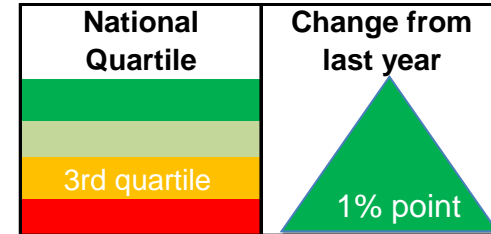
2013-14, Secondary Attendance - Learning Outcomes Dashboards, half terms 1 - 4

<b>Dashboard</b>	<b>Changes Since Previous Version</b>
Percentage attendance in secondary schools	New dashboard added
Percentage authorised absence in secondary schools	New dashboard added
Percentage unauthorised absence in secondary schools	New dashboard added
Percentage persistent absentees in secondary schools	New dashboard added

2013-14, Percentage attendance in secondary schools, half terms 1-4



England Rank	equal 112/151
--------------	---------------



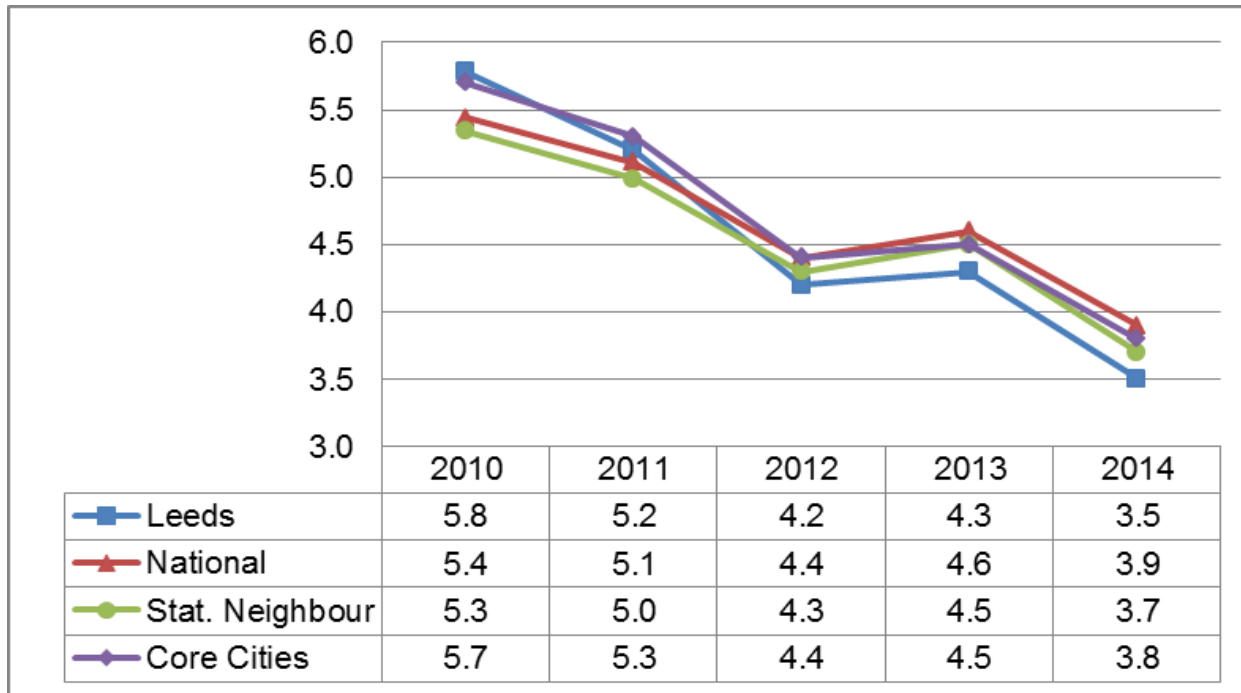
	2010	2011	2012	2013	2014
Leeds	91.6	92.39	93.8	93.7	94.7
National	93.2	93.5	94.3	94.2	94.9
Stat. Neighbour	93.2	93.4	94.3	94.1	95.0
Core Cities	91.9	92.4	93.6	93.6	94.6

**Key Issues:** Attendance increased in Leeds secondary schools in 2013/14 by one percentage point, this was mirrored by core cities. Nationally attendance increased by 0.7 percentage points, statistical neighbours (0.9 percentage points). Attendance remains lower in Leeds than nationally and in statistical neighbour authorities. Please note the statistical neighbour list for Leeds was revised in October 2014, therefore any comparisons should be made with caution.

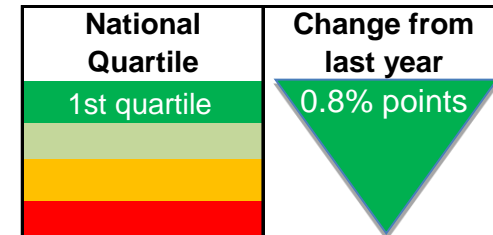
Data Status:  
 Data Source: DfE Statistical First Release SFR38-2014  
 Data Notes: Half terms 1-4



### 2013-14, Percentage authorised absence in secondary schools, half terms 1-4



England Rank	Equal 26/151
--------------	--------------



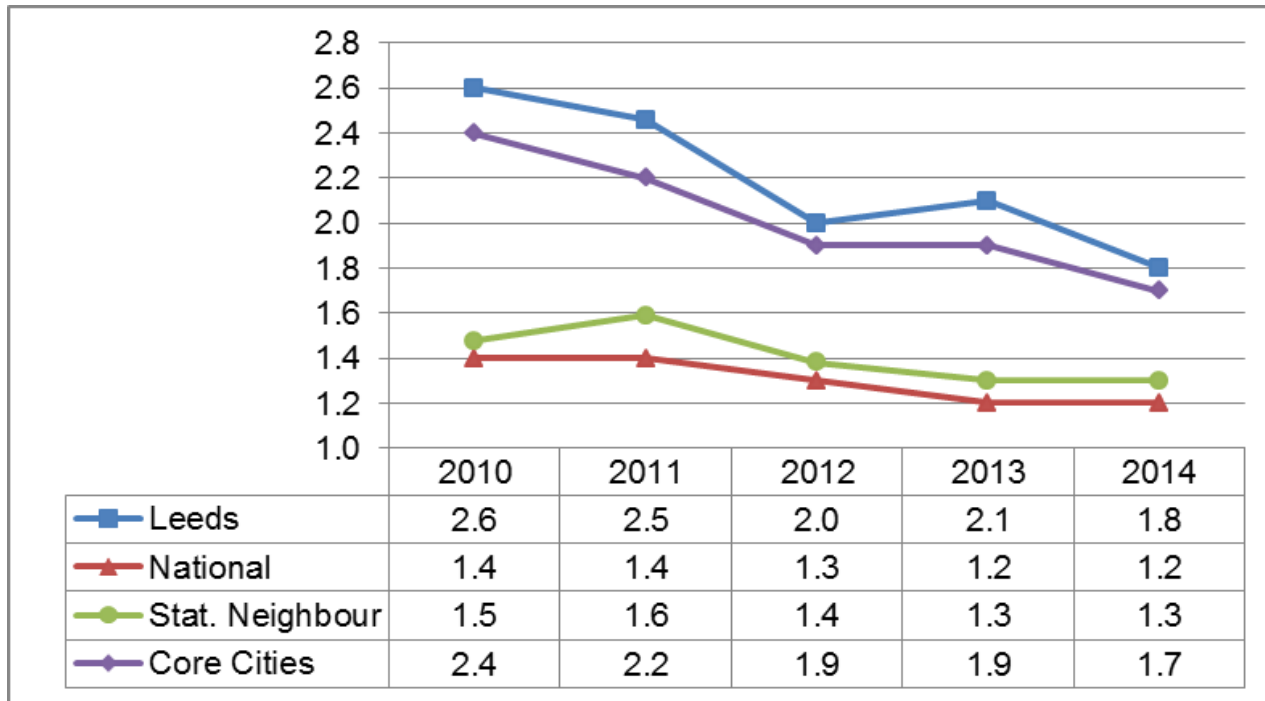
**Key Issues:** There was a fall in authorised absence in Leeds in 2013/14 making Leeds performance better than the national, statistical neighbour and core city average. Please note the statistical neighbour list for Leeds was revised in October 2014, therefore any comparisons should be made with caution.

Data Status:  
 Data Source: DfE Statistical First Release SFR38-2014  
 Data Notes: Half terms 1-4

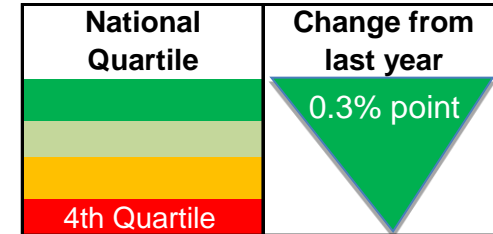




## 2013-14, Percentage unauthorised absence in secondary schools, half terms 1-4



England Rank	equal 131/151
--------------	---------------

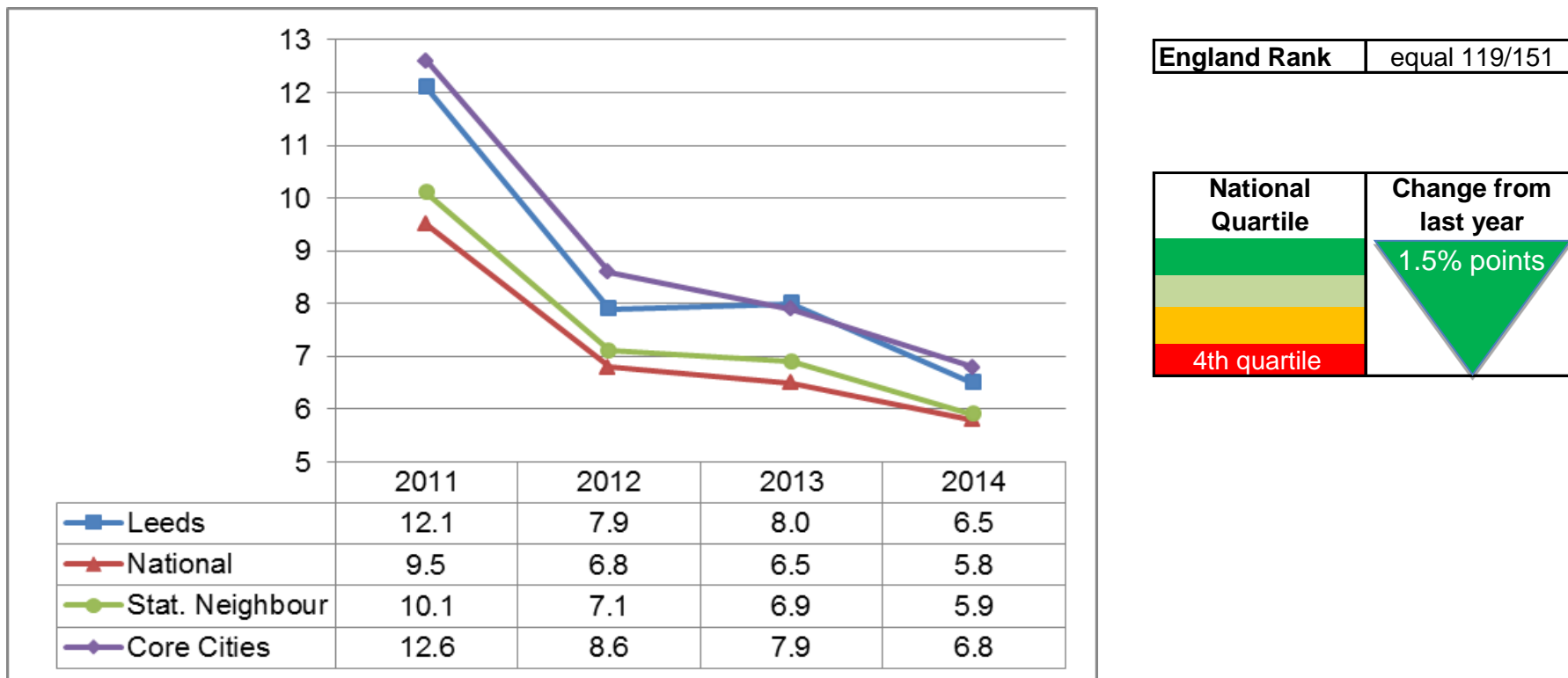


**Key Issues:** There was a 0.3 percentage point fall in unauthorised absence in Leeds in 2013/14. Unauthorised absence remained static nationally and for statistical neighbours, but fell by 0.2 percentage points for core cities. Unauthorised absence remains higher in Leeds. Please note the statistical neighbour list for Leeds was revised in October 2014, therefore any comparisons should be made with caution.

Data Status:  
 Data Source: DfE Statistical First Release SFR38-2014  
 Data Notes: Half terms 1-4



## 2013-14, Percentage persistent absentees in secondary schools, half terms 1-4



**Key Issues:** Key Issues: 6.5 per cent of pupils in Leeds secondary schools missed more than 15 per cent of school in 2013/14, which is 1.5 percentage points lower than in 2012/13. Persistent absence also fell nationally, in statistical neighbours authorities and core cities. Levels of persistent absence remain higher in Leeds, but are now slightly better than core cities.

Data Status:

Data Source: DfE Statistical First Release SFR38-2014

Data Notes: Persistent Absentees are defined as having an overall absence rate of around 15 per cent or more. This equates to 46 or more sessions of absence (authorised and unauthorised) during the year.

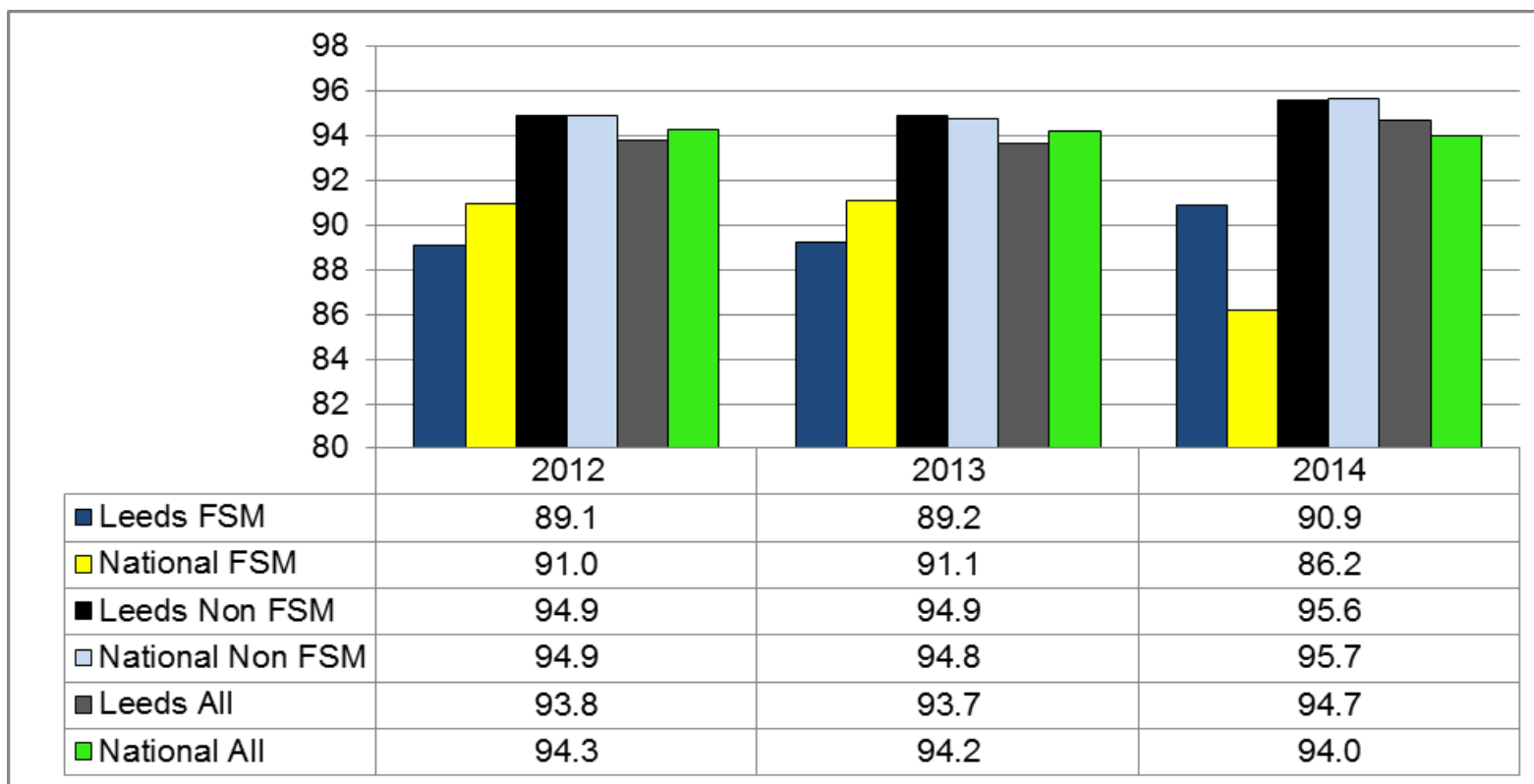
Half terms 1-4



## 2013-14, Secondary Attendance - Learning Outcomes Dashboards - Pupil Groups, half terms 1-4

Dashboard	Changes Since Previous Version
Percentage attendance in secondary schools - Free School Meals (FSM)	
Percentage attendance in secondary schools - EAL	
Percentage attendance in secondary schools - SEN	
Percentage attendance in secondary schools - Ethnicity	
Percentage attendance in secondary schools - Gender	
Percentage attendance in secondary schools - CLA	
Percentage attendance in secondary schools - Year Group	

## 2013-14, Percentage attendance in secondary schools, half terms 1-4 - Free School Meals (FSM)



Change from last year  
1.7% point

**Key Issues:** Attendance of pupils on free school meals has increase by 1.7 per cent points in Leeds, this puts Leeds ahead of the national average by 4.7 per cent points. The attendance of pupils in Leeds that are not on free school meals has increased by 0.7 per cent points but remains slightly behind the national average by 0.1 percentage point.

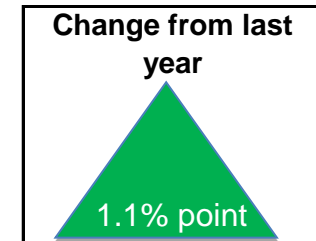
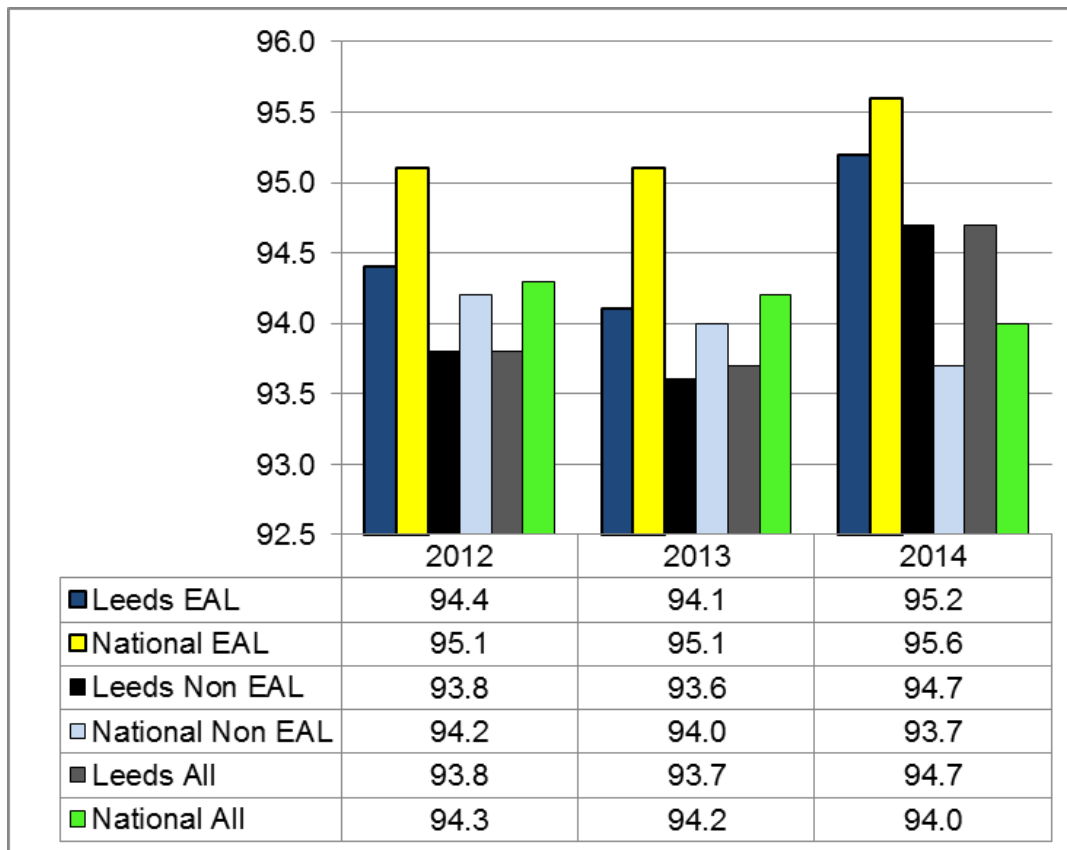
Data Status: Final

Data Source: Leeds data - local; national - DfE Statistical First Release SFR38/2014

Data Notes: As local data has been used there is no ranking or national quartile analysis for this dashboard.



## 2013-14, Percentage attendance in secondary schools, half terms 1-4- English as an additional language (EAL)



**Key Issues:** In Leeds attendance for pupils who have EAL has increased by 1.1 per cent points since 2013 but remains behind the national average by 0.4 per cent points. The attendance of non EAL pupils has also increased in Leeds by 1.1 per cent points putting Leeds ahead of the national average by 1 per cent point.

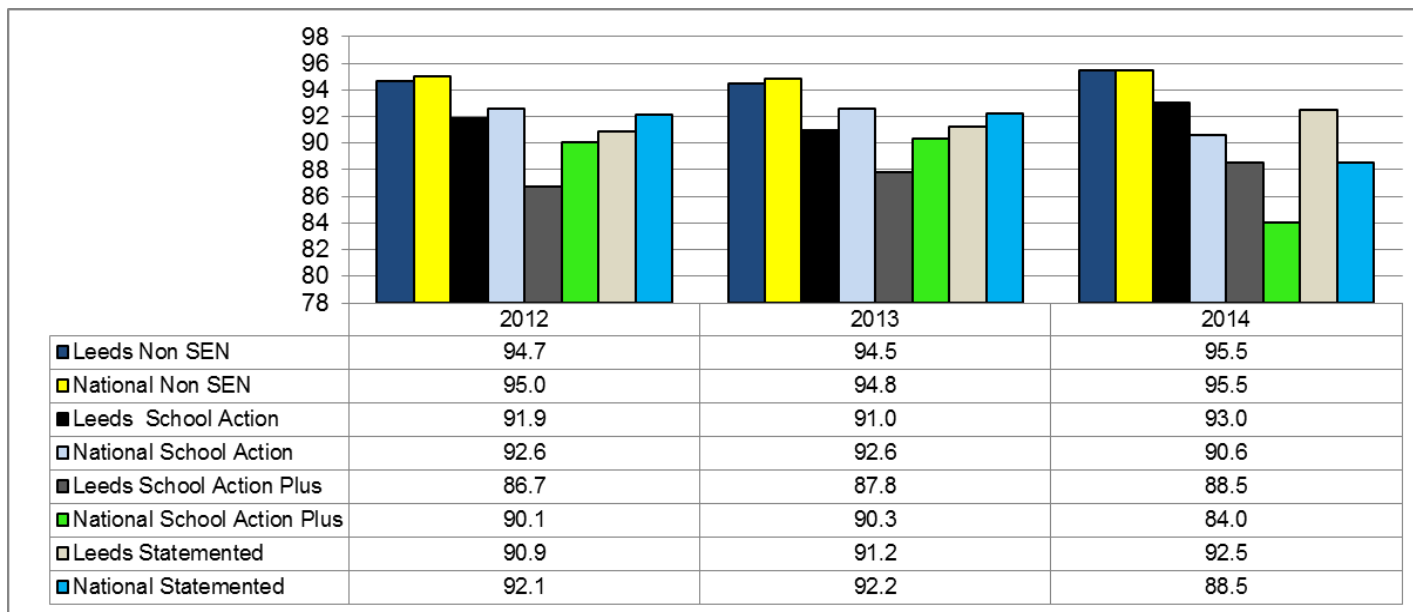
Data Status: Final

Data Source: Leeds data - local; national - DfE Statistical First Release SFR38/2014

Data Notes: As local data has been used there is no ranking or national quartile analysis for this dashboard.



## 2013-14, Percentage attendance in secondary schools, half terms 1-4 - SEN



	Change from last year
<b>Non SEN</b>	1% point
<b>School Action</b>	2.0% point
<b>School Action Plus</b>	0.7% point
<b>Statemented</b>	1.3% point

**Key Issues:** Attendance has increased in all SEN categories since 2013, the biggest improvement is in the school action category (93.0%) where attendance has increased by 2 per cent points since 2013, this puts Leeds ahead of the national average (90.6%). Leeds is also ahead of the national average in the following categories: school action plus and statemented.

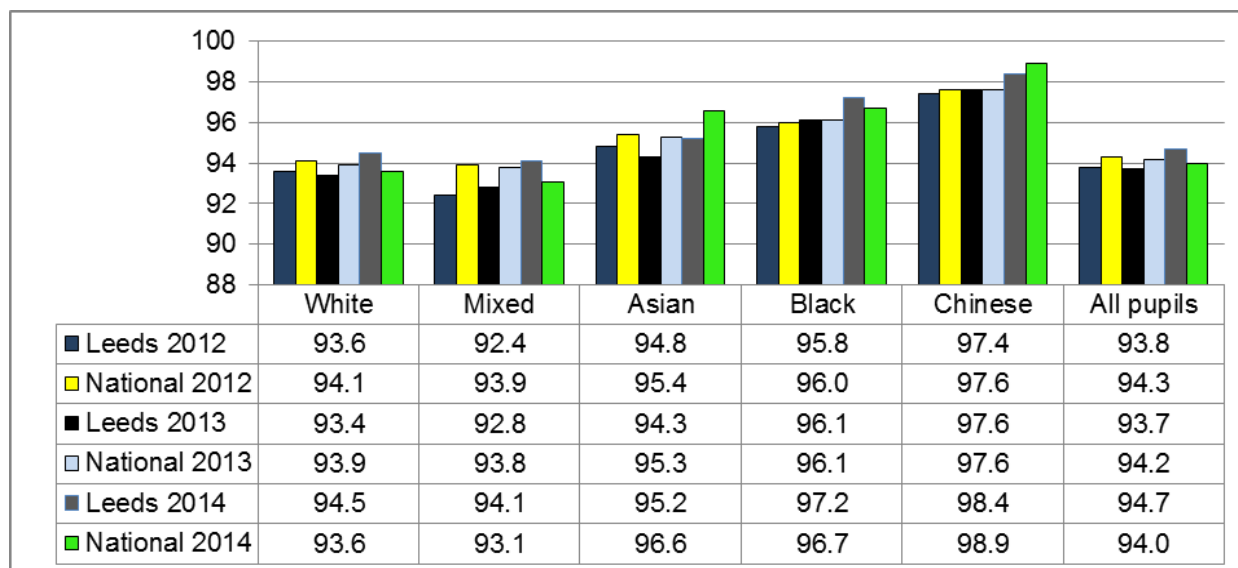
Data Status: Final

Data Source: Leeds data - local; national - DfE Statistical First Release SFR38/2014

Data Notes: As local data has been used there is no ranking or national quartile analysis for this dashboard.



## 2013-14, Percentage authorised absence in secondary schools, half terms 1-4 - Ethnicity



	Change from last year
White	1.1% point ▲
Mixed	1.3% point ▲
Asian	0.9% point ▲
Black	1.1% point ▲
Chinese	0.8% point ▲

**Key Issues:** Chinese and black pupils have the highest attendance rates (98.4% and 97.2%). Performance has improved across all groups in 2014. Leeds is above the national average in the following groups: White. Mixed and black.

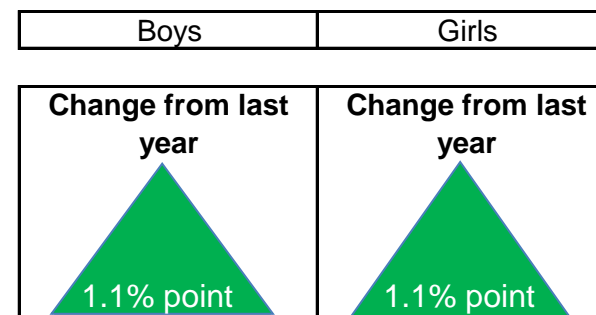
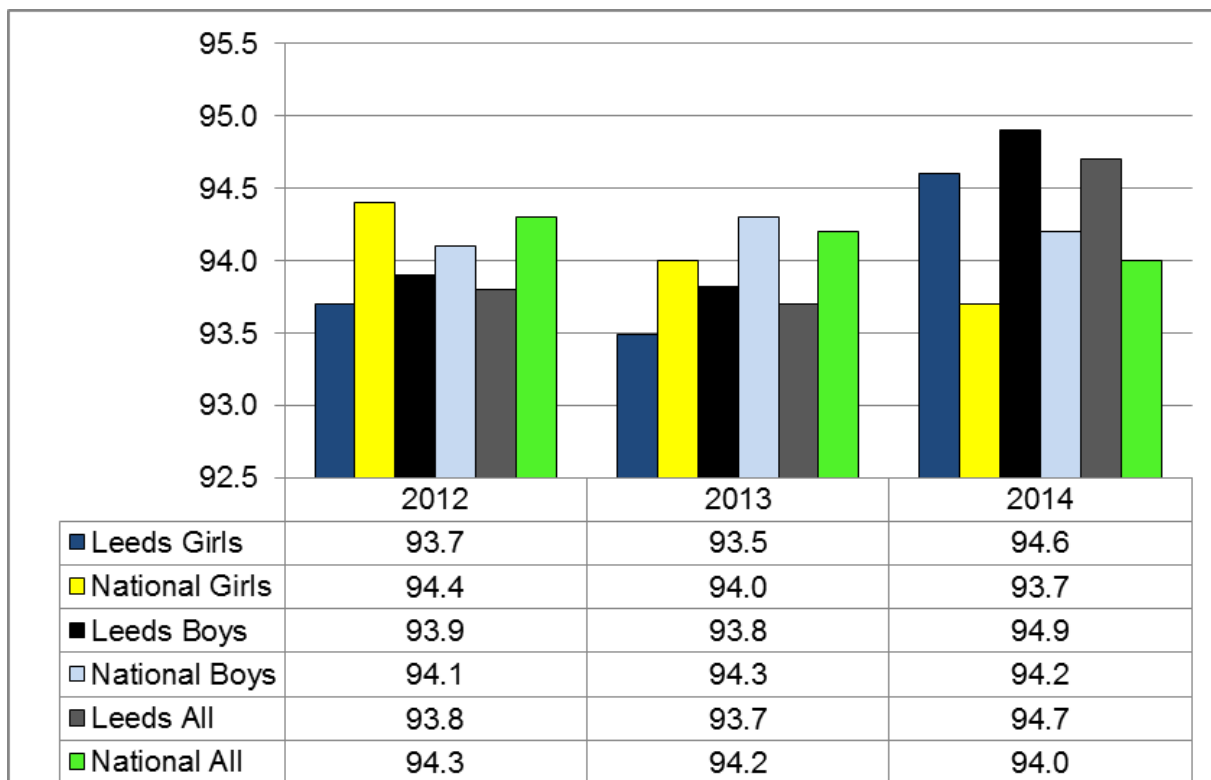
Data Status: Final

Data Source: Leeds data - local; national - DfE Statistical First Release SFR38/2014

Data Notes: As local data has been used there is no ranking or national quartile analysis for this dashboard.



## 2013-14 Percentage attendance in secondary schools, half terms 1-4 - Gender



**Key Issues:** Leeds boys have a higher attendance rate than girls by 0.3 percentage point, replicating the national trend where the gap between girls and boys is 0.5 percentage point.

Data Status: Final

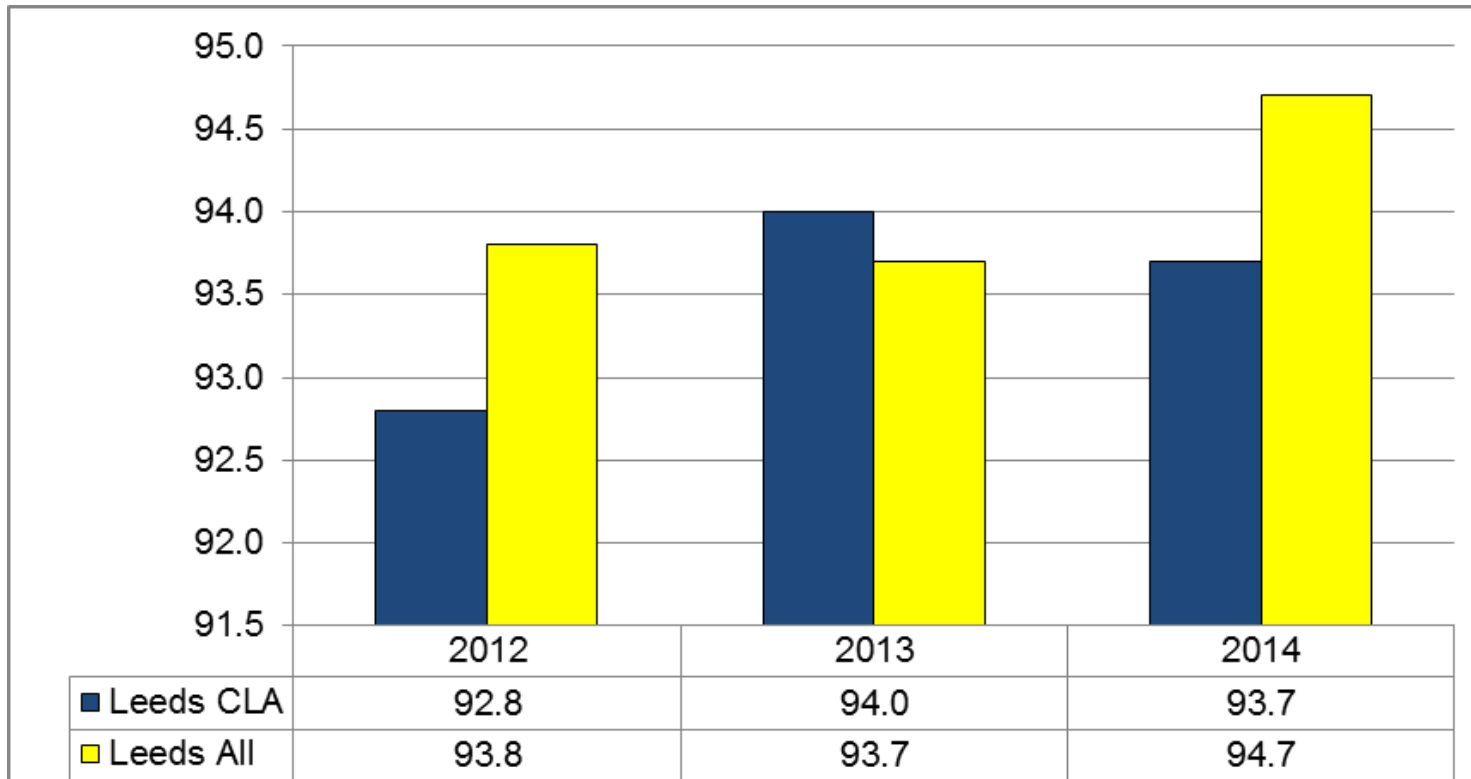
Data Source: Leeds data - local; national - DfE Statistical First Release SFR38/2014

Data Notes: As local data has been used there is no ranking or national quartile analysis for this dashboard.





## 2013-14 Percentage attendance in secondary schools, half terms 1-4 - CLA



Change from last year  
0.3% point

**Key Issues:** Attendance for CLA has decreased by 0.3 percentage point and is behind the Leeds all figure by 1 percentage point.

Data Status: Final

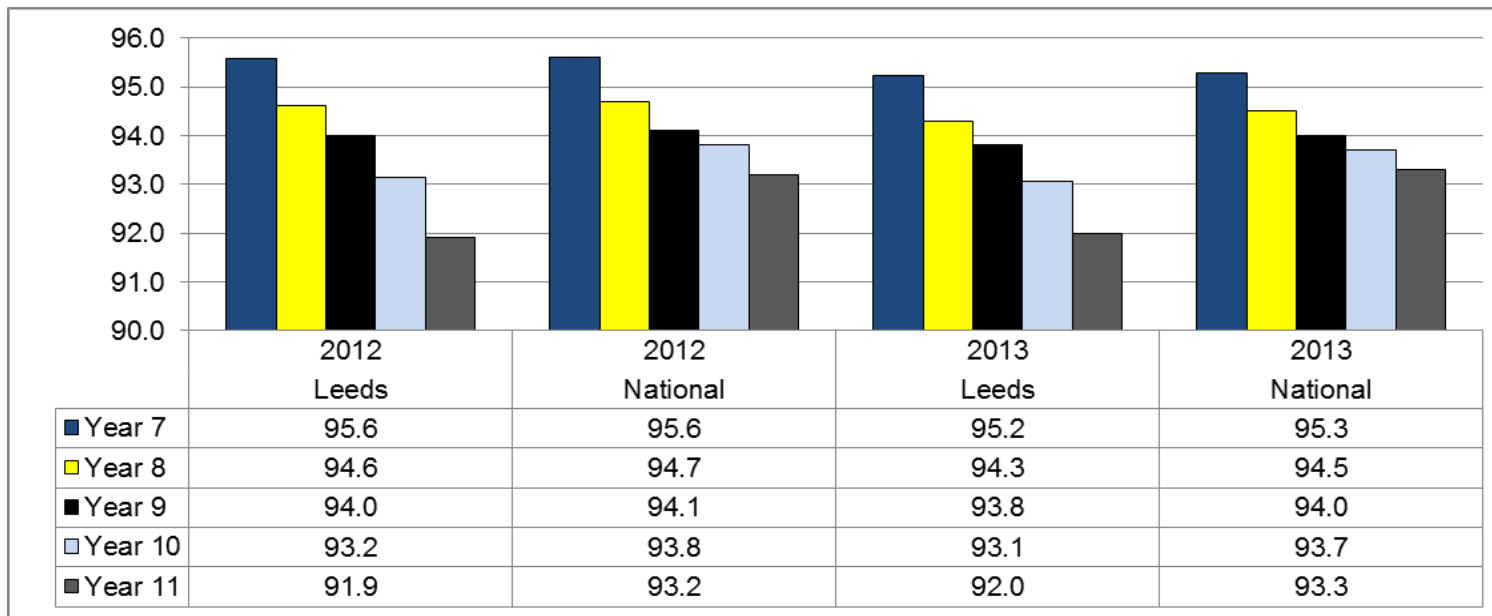
Data Source: Leeds all data

Leeds CLA data - local mainstream schools only

Data Notes: There is no national breakdown of primary and secondary attendance for CLA and as local data has been used there is no ranking or national quartile analysis for this dashboard.



## 2013-14 Percentage attendance in secondary schools, half terms 1-4 - year group



	Change from last year
Year 7	1% point ▲
Year 8	1.2% point ▲
Year 9	0.9% point ▲
Year 10	1% point ▲
Year 11	1.3% point ▲

**Key Issues:** Leeds Year 7 pupils have the highest attendance followed by year 8. Attendance has improved across all year groups. In Leeds years 8, 9 and 10 are above the national average.

Data Status: Final

Data Source: Leeds data - local; national - DfE Statistical First Release SFR38/2014

Data Notes: As local data has been used there is no ranking or national quartile analysis for this dashboard.

