



# MINUTE SHEET

Date: 21 December 2007

Ref:

To: **Brent Brady**

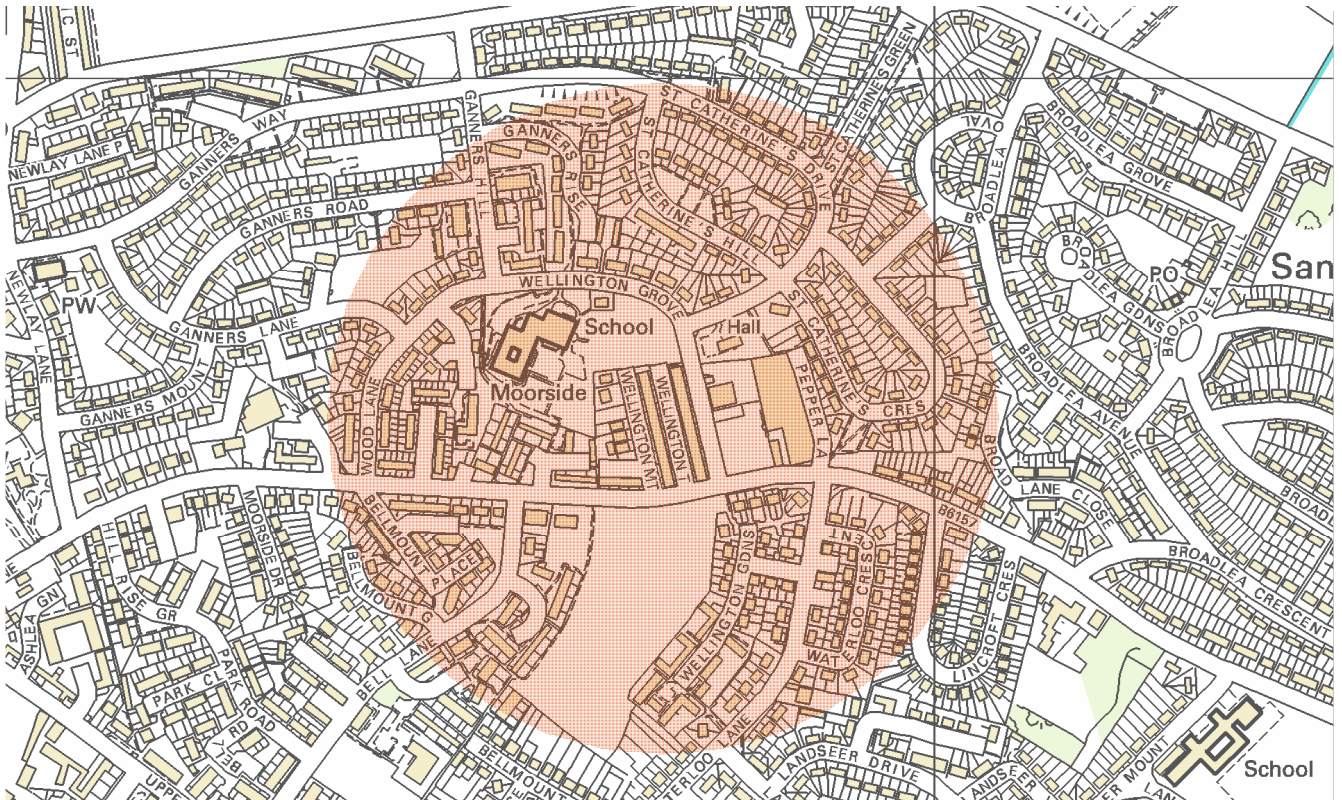
From: GIS Manager Malachi Rangelcroft, Performance Review, Corporate Review.

☎ 01924 292 093

Subject: **Wellington Terrace – Crime & Incident Analysis**

|                      |                                                 |
|----------------------|-------------------------------------------------|
| Crime Area of Study: | Wellington Terrace and 300m radius              |
| Date Period:         | Jun07 – Nov07 (Crime) Sep07 – Nov07 (Incidents) |
| Data Type:           | Recorded Crime Data & Recorded Incidents        |

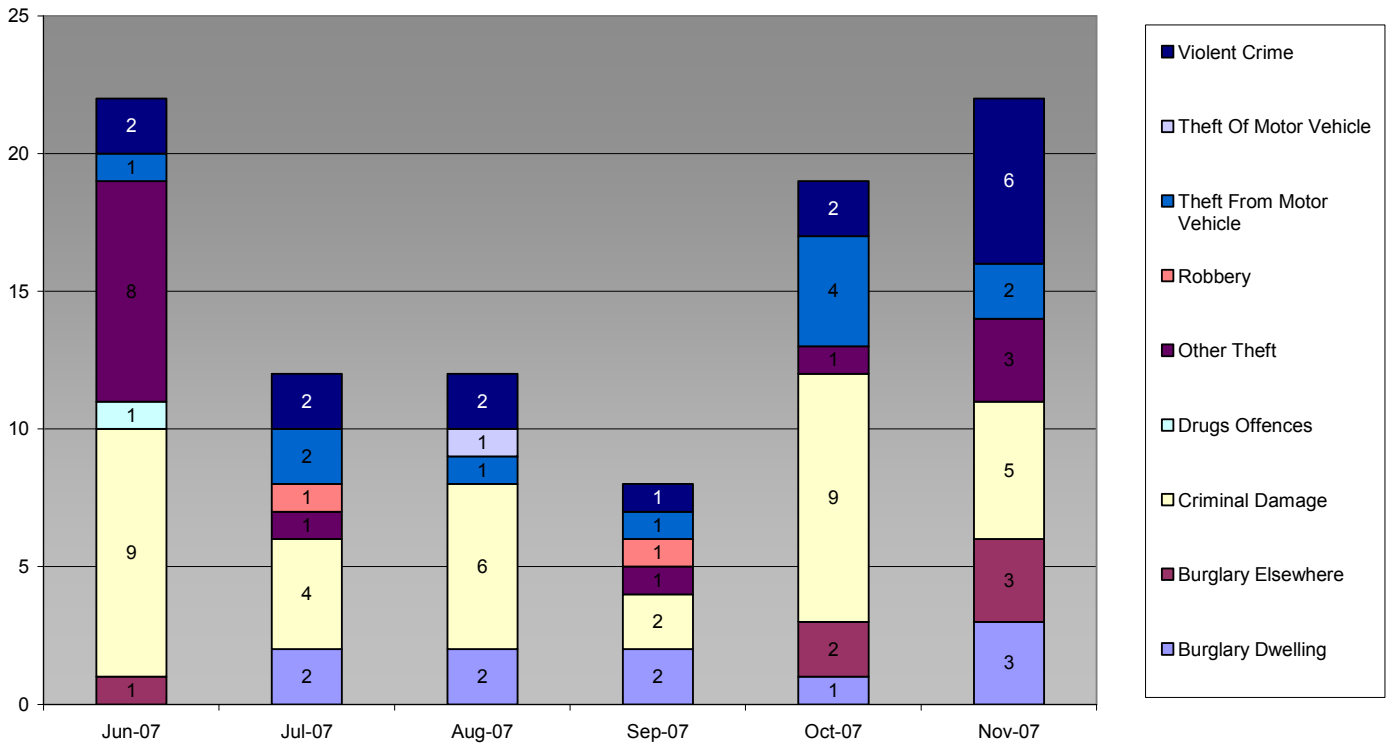
## Wellington Analysis: Area of Study



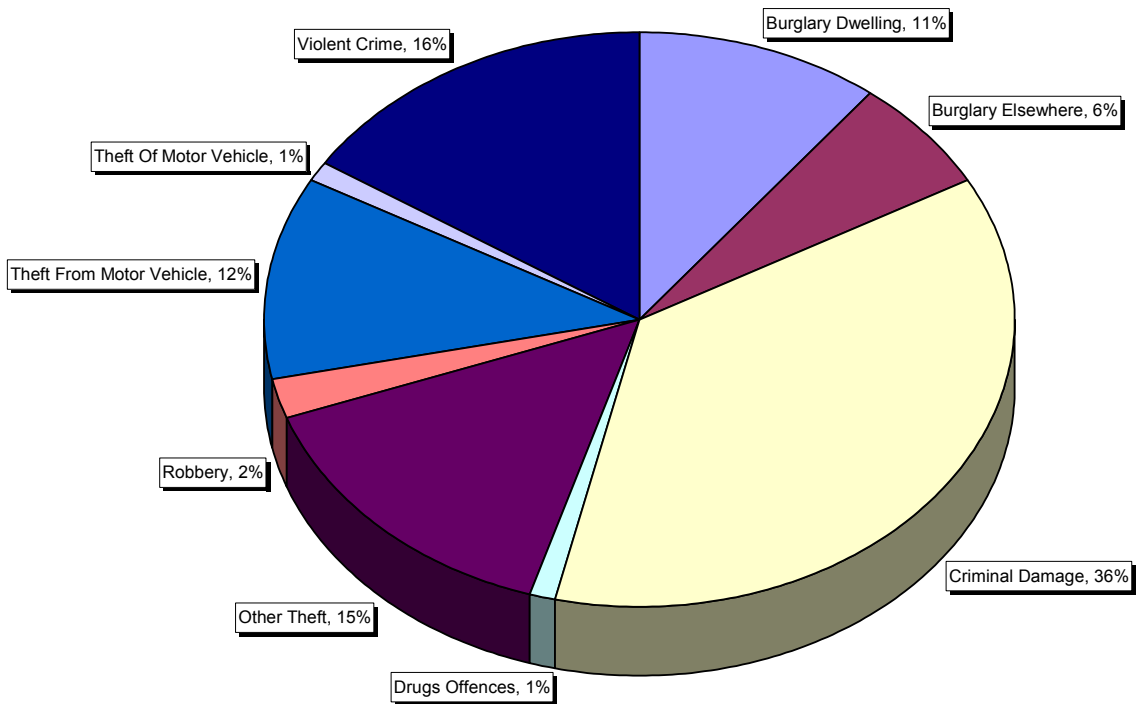
© Crown Copyright. All rights reserved 100022119 2007

Appendix 1 – Wellington Analysis – Area of Study

Crime by Month



Type of Crime (Jun-Nov07)

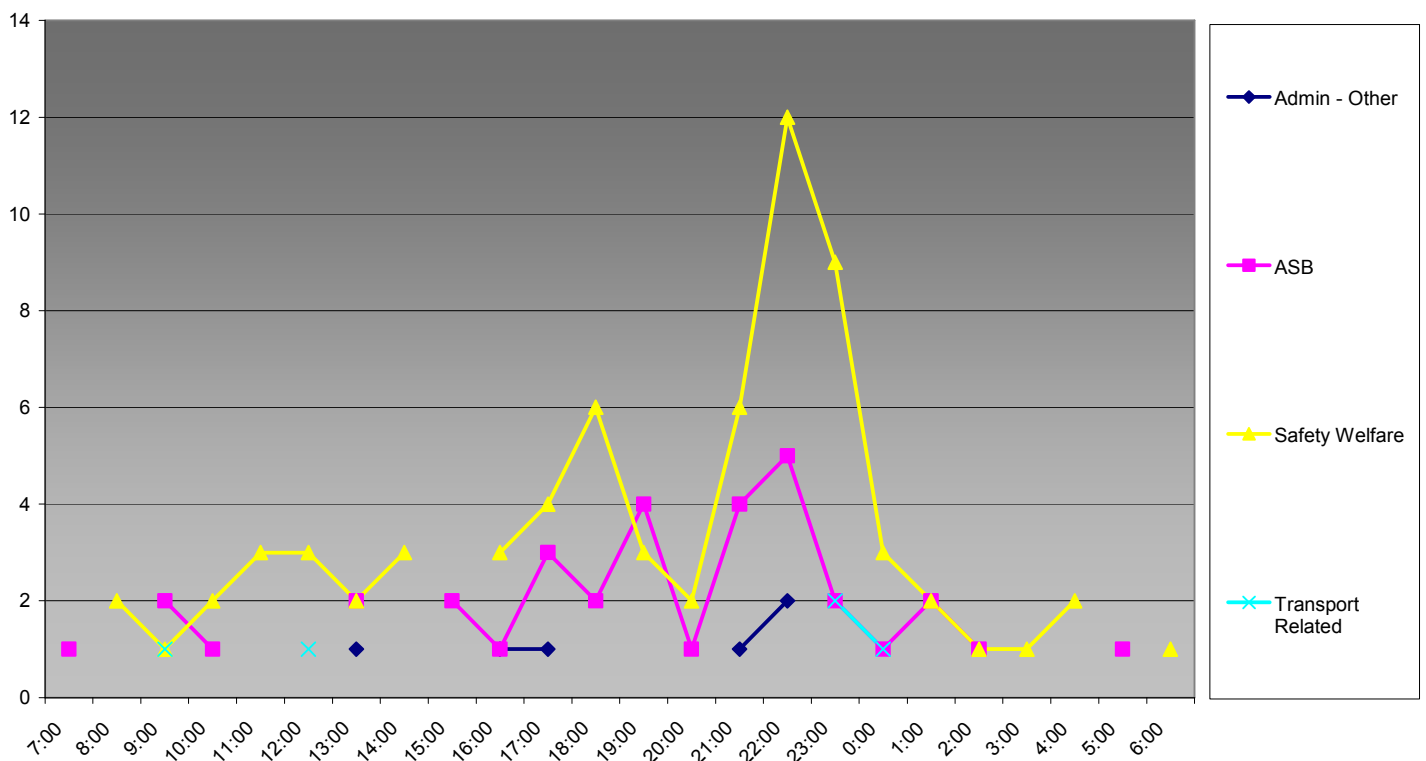


## Appendix 1 – Wellington Analysis – Area of Study

Rates Per 1000 Households or Population against the Leeds District

|                                | Area Rate | Leeds Rate |
|--------------------------------|-----------|------------|
| Burg Dwell per 1000 Households | 26.2      | 32.6       |
| Criminal Damage per 1000 Pop   | 40.7      | 29.9       |
| Drugs Offences per 1000 Pop    | 1.0       | 4.7        |
| Vehicle Crime per 1000 Pop     | 15.9      | 17.1       |
| Violent Crime per 1000 Pop     | 15.9      | 22.6       |
| ASB per 1000 Pop               | 69.4      | 71.2       |

Incidents by Hour for the 3 Month Period



## Appendix 1 – Wellington Analysis – Area of Study

### Incidents and Crimes in Bramley (Beat 6)

#### Offences on Wellington Mount

Over the last two years (between 17/09/05 – 17/09/07) there have been 12 offences committed on Wellington Mount\*

\*Data taken from Corvus.

|                                                 |          |
|-------------------------------------------------|----------|
| <b>THEFT - FROM MOTOR VEHICLE</b>               | <b>5</b> |
| DAMAGE TO MOTOR VEHICLE                         | 4        |
| BURGLARY DWELLING - STEAL DAMAGE OR WITH INTENT | 1        |
| INTERFERENCE WITH MOTOR VEHICLE                 | 1        |
| THEFT - NON SPECIFIC                            | 1        |

The 4 DTMV offences were all committed between 21:30 – 21:40 on the same date (a Wednesday night). Several youths were seen moving down the street towards Broad Lane hitting numerous vehicles with their hands and feet, pushing a wing mirror off a vehicle and jumping up and down on a motor cycle. When the youths were confronted by the complainant and neighbours they retaliated by attacking other vehicles. Wellington Mount is described as being an access route between Broad Lane and St Catherine's Estate.

There were 4 offences committed at Wellington Mount. 2 were TFMV offences committed between 19:30 on 04/12/06 and 08:00 on 05/12/07 where suspect/s forced the driver's door of 2 cars and removed the car stereo. There was another TFMV committed between 04/12/06 – 05/12/06 where suspect/s attacked the door lock and stole a CD player). The other offence was a theft non specific offence where garden furniture and ornaments were stolen.

There were 2 TFMV offences committed on this street where ladders were removed from vans. In both offences the rope/security chain/cables securing the ladders were cut off.

The interference with a motor vehicle offence involved the vehicle door being bent back and an attempt made to hot wire the car.

In the Burglary Dwelling offence the suspect/s gained entry to the dwelling through an insecure door and stole a plasma TV, mobile phone, keys, cash and a handbag. The handbag was later recovered by the complainant in an alleyway at the end of the street.

All of the above offences were committed in the evening time / overnight (between 17:45 – 08:00).

#### Offences on Wellington Terrace

There were 23 offences committed on Wellington Terrace between 17/09/05 – 17/09/07. The majority of offences committed on this street were vehicle crimes (65%) and 35% of these were damage to motor vehicle crimes. There were 4 kinds of damage caused to the vehicles on this street; 3 x puncture tyre/s, 2 x smash windscreen, 2 x scratch vehicle and 1 x kick and stand on bonnet causing a dent.

|                                                 |          |
|-------------------------------------------------|----------|
| <b>DAMAGE TO MOTOR VEHICLE</b>                  | <b>8</b> |
| THEFT - FROM MOTOR VEHICLE                      | 3        |
| ASSAULT OCCASIONING ABH - S.47                  | 2        |
| BURGLARY DWELLING - STEAL DAMAGE OR WITH INTENT | 2        |
| DAMAGE TO DWELLING                              | 2        |
| INTERFERENCE WITH MOTOR VEHICLE                 | 2        |
| AGGRAVATED VEHICLE TAKING - TWOC / TWLA         | 1        |
| ARSON                                           | 1        |
| DAMAGE PROPERTY - NON SPECIFIC                  | 1        |
| THEFT - OF MOTOR VEHICLE                        | 1        |

## Appendix 1 – Wellington Analysis – Area of Study

The TFMV offences were varied; 1 x smash window and search glove box, the following day the door mirror was pulled off the vehicle, 1 x remove power tools from the back of a pick up truck and 1 x remove spare wheel from vehicle.

Interference with a Motor Vehicle – 1 x force door lock but no entry gained and 1 x pull back the top of the door (unclear if entry gained).

The theft of motor vehicle was a theft of a scooter.

The remaining offences involved 2 offences were a bb gun/rifle was fired at a dwelling, a stolen vehicle being driven erratically in the street, a bike underneath the vehicle seat was set of fire, two burglaries (1 x enter via an insecure door and steal car and property (car crashes into nearby wall), and 1 x force door lock and steal property and car (car parked 50 metres down the road), cut satellite cable and two assaults (a group of youths is gathered outside the complainants address, 1 youth enters the garden and refuses to leave, an argument ensues and the complainant is assaulted and 1 x complainant is approached by the suspect who asks who threw a stone at his window, complainant is assaulted).

### Incidents Over the Last Six Months (18/03/07 – 17/09/07)

#### Wellington Mount

There were 6 incidents reported on Wellington Mount over the last 6 months. Only one was anti-social behaviour – loutish behaviour.

| Crime                         | Incidents                         | Total    |
|-------------------------------|-----------------------------------|----------|
| Crime - Criminal Damage       |                                   | 2        |
| Crime - Theft of from Vehicle |                                   | 1        |
| Crime - Suspicious Circs      |                                   | 1        |
|                               | Safety Welfare - Suspicious Circs | 1        |
|                               | ASB - Loutish Behaviour           | 1        |
| <b>Total</b>                  |                                   | <b>6</b> |

#### Wellington Terrace

There were 7 incidents reported on Wellington Terrace over the last six months, three of which were loutish behaviour.

| Incidents                          | Total    |
|------------------------------------|----------|
| ASB - Loutish Behaviour            | 3        |
| X - Unspecified                    | 3        |
| Safety Welfare - Firearms No Crime | 1        |
| <b>Total</b>                       | <b>7</b> |

The unspecified incidents involved youths climbing on the shed roof and banging on the windows, nuisance youths on the street pulling faces at the caller through the window and damage to car caused by suspect/s jumping on the bonnet.