



**Moor Allerton Partnership (MAP)
Neighbourhood Improvement Plan**

2011-12

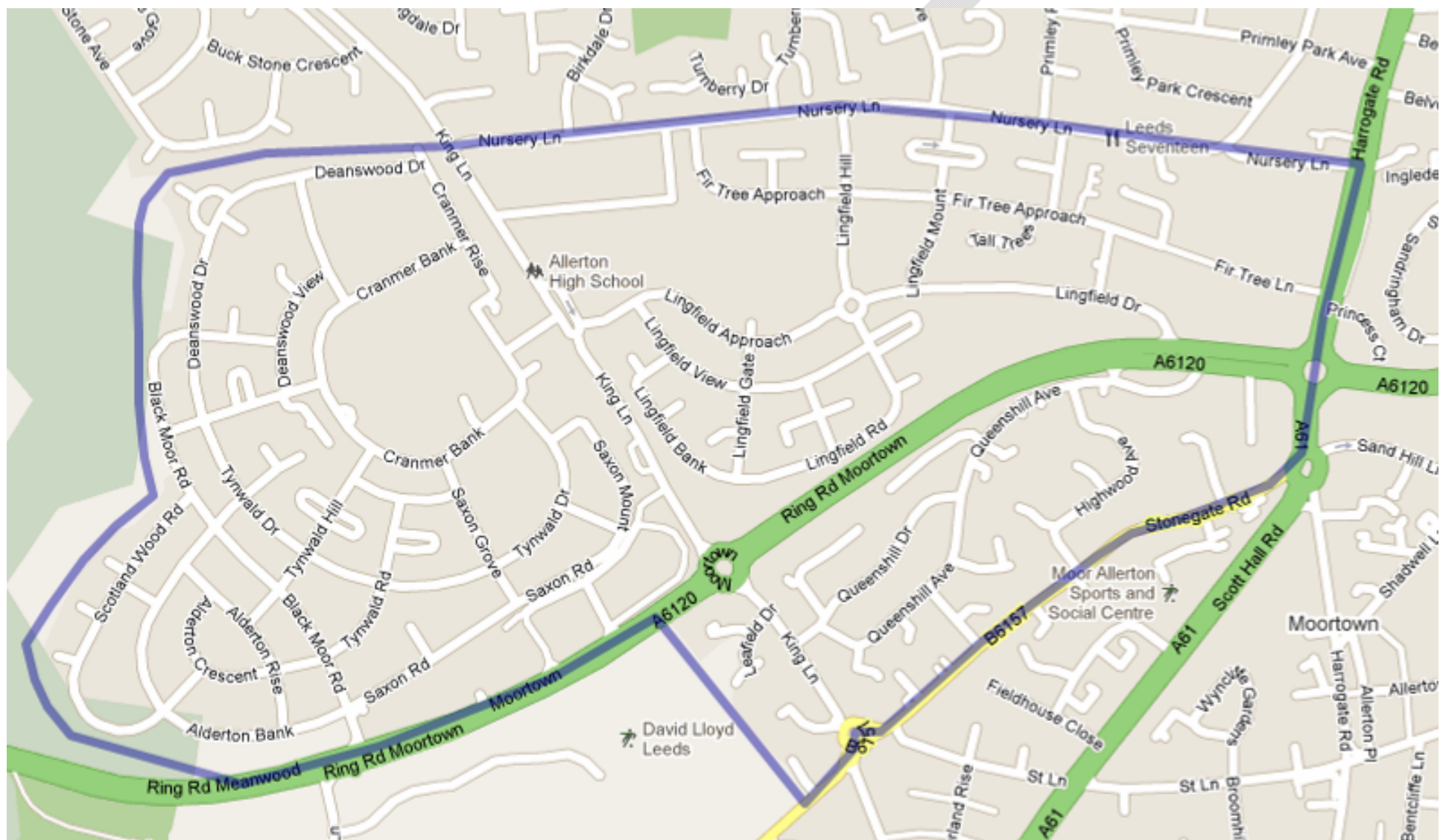
East & North East Area Management Team

Contact: Carole Clark
0113-3367629
carole.clark@leeds.gov.uk

Contents

Page

3	Map of the Moor Allerton Partnership Area
4	Introduction, Neighbourhood Index
5	Moor Allerton Neighbourhood Summary
6	Moor Allerton Neighbourhood Index information
7	Moor Allerton Neighbourhood Index comparisons 2010-2011
8	Queenshills/Leafields Neighbourhood Summary
9	Index of Multiple Deprivation
10	Moor Allerton Partnership Priorities



Moor Allerton Partnership Area

Introduction

This Neighbourhood Improvement Plan (NIP) is a strategic document providing the statistical information and improvement objectives for the area as well as a plan of action in order to achieve those objectives.

The Moor Allerton Priority Neighbourhood includes the Lingfields, Firtrees, Cranmers areas in Outer North East Leeds bounded by Harrogate Road to the east, Nursery Lane to the North, and Black Moor Road to the East. To the South it extends over the ring road to Stonegate Road to include the Queenhills/Leafields area which is in Inner North East Leeds.

Delivery of the NIP action plan is the responsibility of the Moor Allerton Partnership (MAP), a partnership of statutory and voluntary organisations. The MAP partners include Leeds City Council, East North East Homes Leeds (ENEHL), Leeds Jewish Housing Association; , West Yorkshire Police, Job Centre Plus, MAECare, Northcall IGEN and Groundwork Leeds.

Outer North East Area Committee and Inner North East Area Committee – The committees provide a strategic reporting mechanism and democratic accountability for the Neighbourhood Improvement Plan. They are responsible for signing off the NIP for a twelve month period and can assist in ensuring the buy in of partner agencies.

Neighbourhood Index

The Lingfields, Firtrees, Cranmers areas form part of the Moor Allerton Middle Layer Super Output Area (MSOA). The 2011 statistics show Moor Allerton is rank 36th out of 108 MSOAs in the city. This is an improvement of 3 places from 2010.

The Queenhills/Leafields neighbourhood falls within the Carr Manor Super Output Area, however this MSOA covers a much wider neighbourhood, so the statistics do not necessarily reflect the current picture for the Queenshills/Leafields.

Lower Level Super Output Area statistics are available from the Office for National statistics; these statistics are for August 2010 but indicate that the areas of concern are the same as for the Moor Allerton MSOA. The percentage of all people of working age claiming a benefit is 30%, the percentage of JSA claimants is 7% and the percentage of persons claiming Incapacity benefit is 16%. These percentages are all above the city average.

MSOA: E02002347: Moor Allerton Neighbourhood Summary

Location	The area is located in the Outer North East Leeds. It is located north of the Outer Ring Road and to the east of Harrogate Road, predominantly residential it contains the housing areas of Aldertons, Cranmers, Lingfields, Fir Trees and Tynwalds.
Population	It contains approximately 6,200 people living in 2,900 households. The age breakdown shows slightly higher than average proportions of both children and of older people. The area has a diverse ethnic population with over 15% of people coming from Black Minority Ethnic (BME) communities.
Physical Description	46% of households are in owner-occupation and 41% are renting from the local authority (through and ALMO). Semi-detached housing accounts for 51.5% of the stock with purpose built flats accounting for a further 29%. 59% of properties are classified in Council Tax Band A and 20% in Band B.
Key services located in the area	<p>There are four primary Schools: Alwoodley Primary, Allerton C of E, Brodetsky Primary, and St Pauls Catholic school plus Allerton High School.</p> <p>The Alwoodley Children's Centre is located in Allerton C of E primary school and provides assistance to families with children up to 5 years old – from midwives, health visitors to parenting support and activities, out of school clubs, training and support with employment.</p> <p>The area includes: Moor Allerton shopping centre with the Moor Allerton Library; Moor Allerton Elderly Care (MAECare) centre which provides a range of support services for older people; Northcall centre and Open House – (the latter is based in a council owned shop unit) and both provide a range of services and activities for the community.</p> <p>There is also a smaller shopping parade at Cramner Bank which houses a post office.</p> <p>In 2010 a home for people with learning difficulties opened in Cranmer Bank and provided employment for 20 people.</p> <p>The area is served by Roundhay, Allerton and Moortown (RAM) tasking, which is a multi-agency team dealing with issues of crime and anti-social behaviour as well as environment.</p>



Leeds Neighbourhood Index

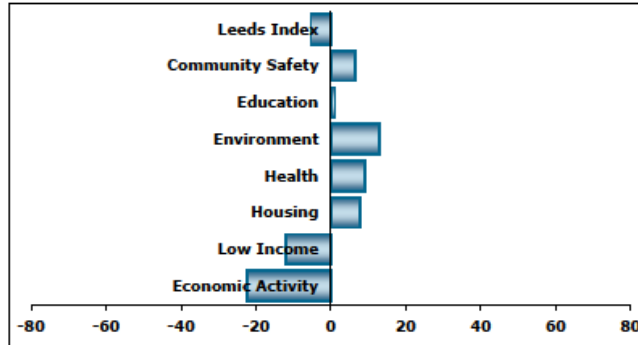
Domain Summary				
2011	Rank	Score	Leeds Score	Diff.
Economic Activity	26	48.27	68.48	-22.21
Low Income	30	48.75	58.74	-11.99
Housing	61	65.63	57.92	7.71
Health	49	59.89	50.84	9.05
Environment	64	91.90	78.94	12.96
Education	42	56.32	55.19	1.13
Community Safety	52	84.81	78.38	6.43
Leeds Index	36	50.85	56.19	-5.31

Key Statistics	Profiled Area		Leeds M.D.	
	Number	Rate	Number	Rate
Population 2009 M.Y.E	8,196		787,701	
Households Liable for Council Tax	2,760		321,098	
BME Population	902	15.27%	77,482	10.83%
Foundation Stage	32	50.00%	4,251	52.49%
Key Stage 2	48	80.00%	5,598	73.09%
Key Stage 4	38	49.10%	3,858	50.16%
Permanent Absenteeism	28	8.09%	2,838	7.60%
NEET (Nov - Jan Average)	16	7.42%	1506	7.58%
Crimes Against the Person	224	N/A	25,887	N/A
Acquisitive Property Crime	215	N/A	45,203	N/A
Environmental Crimes	68	N/A	11,961	N/A
Community Disorders	495	N/A	51,988	N/A
Average Purchase Price	£144,087	N/A	£170,997	N/A
Price / Income Ratio	5.82	N/A	5.24	N/A
Housing Turnover	302	10.63%	47,987	14.23%
Empty Homes (90+ days)	111	3.91%	21,110	6.28%
Children in Workless Households	283	24.21%	25,184	18.88%
Households Receiving In-Work Benefits	198	7.17%	15,569	4.85%
60+ Households in Receipt of Benefits	417	15.11%	33,200	10.34%
Court Payment Orders	162	N/A	23,562	N/A
Job Seekers' Allowance	228	5.83%	22,675	4.34%
Incapacity Benefit	446	11.38%	30,830	5.90%
Lone Parent Income Support	75	1.92%	8,710	1.67%
Circulatory Disease Mortality	N/A	68.34	N/A	79.13
Cancer Mortality	N/A	103.48	N/A	117.74
Low Birthweight	N/A	7.88	N/A	7.88
Adult Social Care	174	N/A	12,836	N/A
Fly Tipping	18	N/A	4,375	N/A
Graffiti	15	N/A	3,141	N/A
Waste Issue	27	N/A	6,852	N/A

Adult Social Care	Profiled Area		Leeds MD	
	Number	Rate	Number	Rate
Community Based Service Users	17	N/A	1,448	N/A
Learning Disabilities	49	N/A	2,424	N/A
Mental Health	98	N/A	8,374	N/A
Physical Disability	10	N/A	590	N/A
Other Reasons				

Age (2009 M.Y.E.)	Profiled Area		Leeds MD	
	Number	Rate	Number	Rate
Children	1,169	18.87%	133,398	18.83%
Working Age	3,909	63.09%	522,769	68.37%
Older People	1,118	18.04%	131,536	18.70%

E02002347: Moor Allerton



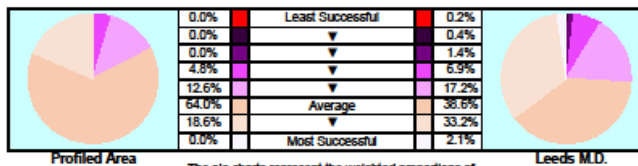
The area is located in the Outer North East. It is located north of the Outer Ring Road and to the west of Harrogate Road, predominantly residential it contains the housing areas of Aldertons, Cranmers, Lingfields, Fir Trees and Tynwalds.

The age breakdown shows slightly higher than average proportions of both children and of older people. The area has a diverse ethnic population with over 15% of people coming from BME communities.

46% of households are in owner-occupation and 41% are renting from the local authority (through and ALMO). Semi-detached housing accounts for 51.5% of the stock with purpose built flats accounting for a further 29%. 59% of properties are classified in Council Tax Band A and 20% in Band B.

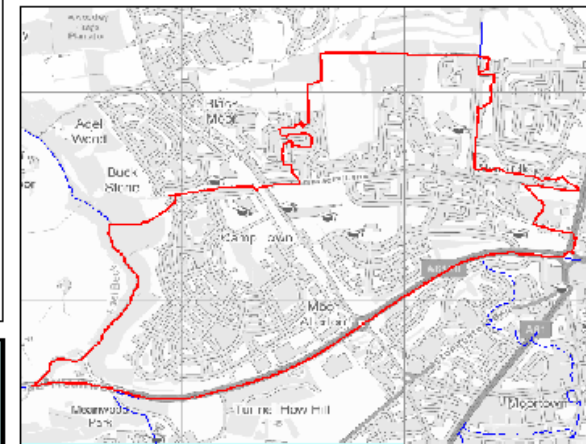
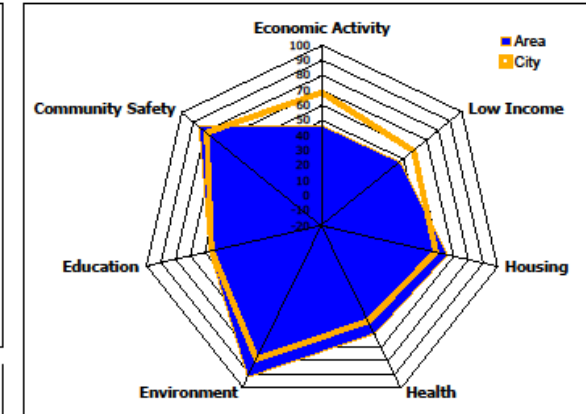
The area contains three primary Schools, a High School and a Children's Centre. The area has been designated a priority neighbourhood and is served by Moor Allerton Partnership (MAP) which comprises representatives from all major statutory and voluntary organisations working together to improve the quality of life for local residents.

The area includes: Moor Allerton Shopping Centre; a library; Moor Allerton Elderly Care (MAE Care) Centre which provides a range of support services for older people; Northcall Centre providing a range of services and activities for the community; and Open House - based in a council owned shop unit offers a range of activities.



The pie charts represent the weighted proportions of individual indicators falling into each band

Ethnicity (2001 Census)	Profiled Area		Leeds M.D.	
	Number	Rate	Number	Rate
White British	5,008	84.73%	837,872	88.17%
Irish	70	1.18%	8,532	1.09%
Black Caribbean & White	81	1.37%	4,577	0.64%
Black African & White	7	0.12%	867	0.12%
Asian & White	37	0.63%	2,541	0.36%
Indian	139	2.35%	12,298	1.72%
Pakistani	139	2.35%	15,084	2.11%
Bangladeshi	10	0.17%	2,531	0.35%
Black Caribbean	83	1.40%	6,737	0.94%
Black African	32	0.54%	2,404	0.34%
Chinese	48	0.81%	3,488	0.48%



Faith (2001 Census)	Profiled Area		Leeds M.D.	
	Number	Rate	Number	Rate
Christian	3,768	64.08%	492,656	68.87%
Buddhist	6	0.10%	1,603	0.22%
Hindu	56	0.95%	4,189	0.59%
Jewish	384	6.53%	8,233	1.15%
Muslim	234	3.95%	21,385	2.98%
Sikh	87	1.45%	7,601	1.08%

Supplementary Health Information	Profiled Area		Leeds MD	
	Number	Rate	Number	Rate
CHD Prevalance	N/A	4%	N/A	3.5%
Smoking Prevalance	N/A	25%	N/A	22.8%

Disability (2001 Census)	Profiled Area		Leeds MD	
	Number	Rate	Number	Rate
Limiting Long-Term Illness	1,329	22.59%	128,647	17.98%

This product includes mapping data licensed from Ordnance Survey with the permission of HMSO © Crown copyright and/or database right 2011. All rights reserved. License number 100019567

Neighbourhood Index Comparison of 2010 and 2011

Leeds City Council has worked with partner organisations to develop an enhanced area profiling system at the neighbourhood level. The result of this work is the production of a "Neighbourhood Index" for the city, which provides the Council and its partners with a robust evidence base by which to plan service interventions and to begin to identify and guide resources into the areas of greatest need. The information in the neighbourhood Index is based on geographical units known as Middle Super Output Areas (MSOAs). There are 108 MSOAs in the city of Leeds. The higher the Neighbourhood Index position the better the area is performing on a city wide level in a particular domain. The 2011 statistics show Moor Allerton is rank 36th out of 108 MSOAs in the city. This is an improvement of 3 places from 2010.

Economic Activity

This domain continues to have a low overall score and remains below the city average. The number of working age population claiming incapacity benefit has increased from 425 (10.92%) to 445 (11.38%). The overall rank for economic activity has dropped from 28 to 26.

Low Income

This domain also continues to have a low overall score below the city average. The number of children in working age households in receipt of Income Support or Job Seekers Allowance (JSA) and claiming Housing/Council Tax benefit has increased from 271 (22.07%) to 283 (24.21%). Number of working age households claiming Housing/Council Tax benefit but not in receipt of JSA or Income Support has increased from 160 (5.72%) to 198 (7.17%). The overall rank has dropped from 31 to 30.

Housing

Housing dropped 2 points in the ranking to 59 in 2010, but has increased back to 61 for 2011. The average purchase price has dropped from £148,102 to £144,087. On the plus side, the Empty Homes (90days +) sub domain, remains stable showing that the housing market in Moor Allerton remains desirable. However, the time it takes to re-let properties is still relatively long.

Health

The Health domain ranking has increased from 32 to 49 which is a significant improvement taking this domain to slightly above average. Circulatory Disease Mortality has reduced, cancer mortality has remained static and the incidence of low birthweights has reduced.

The number of people needing assistance through the adult social care process has increased from 163 to 174. However caution should be observed in interpreting these results. The measured factors are measures of inputs to the localities, rather than the actual measure of service need in these areas.

Environment

The number of flytipping jobs attended by the council is down from 42 to 18, the number of graffiti jobs is down from 21 to 15. The number of service requests received by Health and Environmental Action Services is down from 40 to 27. Overall, the environment rank has improved dramatically from 35 to 64 putting environment above the city average.

Education

This domain deteriorated rapidly from 2009 to 2010, however there has now been an improvement. The percentage of pupils achieving 78+ points plus 6+ in CLL and PSE¹ has increased from 34.72% to 50%. The percentage of pupils achieving level 4+ in Key Stage 2 English and Maths has increased from 75.34% to 80%. The percentage of pupils achieving 5 or more GCSEs at grades A*-C, including English and Maths has increased from 40.24% to 48.1%. Persistent absenteeism and young people not in education, employment and training (NEET) do not appear to have deteriorated. The overall rank for education has increased from 39 to 42, and education is now slightly above the city average.

Community Safety

This domain is showing greatest improvement of all from 2009 to 2010. However it deteriorated again in 2011. The number of crimes against the person, has increased from 185 to 224. This includes violent crime, robbery, deliberate dwelling fires, hate incidents and domestic violence. The number of community disorders has increased from 449 to 495. This includes drug offences, other crime including deliberate secondary fires², malicious calls and anti-social behaviour. Overall the crime domain has done down from 55 to 52.

¹ Early Learning Goals - Personal, Social and Emotional Development; Communication, Language and Literacy;

² Secondary fires are generally small fires which start in, and are confined to, outdoor locations.

LSOA: Leeds 025D/E01011510: Queenshills and Leafields Neighbourhood Summary

Location	The area is located in the Inner North East, just south of the Outer Ring Road. It is bordered by the David Lloyd leisure centre to the West, Stonegate Road to the South and Harrogate Road to the East. It is predominantly residential and contains the housing areas of the Queenshills and Leafields.
Population	It contains approximately 1,575 people living in 883 households. The age breakdown shows higher than average number of older people (44% are over 50).
Physical Description	Leeds Jewish Housing own over 200 of the properties in the Queenshills estate, including 130 sheltered housing units, and another 62 flats are currently under construction. The properties are a mixture of flats, houses, maisonettes and bungalows and a number offer supported living. The other properties in the area are also mixed and include a high rise block, Leafield Towers, which has 60 flats. They are mainly owned by East North East Homes Leeds although some have been bought privately and where that is the case, they attract a reasonable price for the area, approx £125,000 for a 3 bed semi and £75,000 for a flat.
Key services located in the area	<p>The nearest primary schools are Moortown Primary, Carr Manor and Immaculate Heart RC and the nearest High schools are Allerton Grange, Carr Manor, Allerton High and Cardinal Heenan.</p> <p>Both Leeds Jewish Housing Association and East North East Homes have offices in the area that serve their immediate clientele.</p> <p>There is no Leeds City Council community centre in the area although the popular Marjorie and Arnold Ziff Centre is located here and runs a large number of activities, primarily used by the Jewish community, and Moortown Baptist Church has rooms that can be used by the community.</p> <p>There is a lack of other venues for community activity, particularly for young people with the nearest provision being at Stainbeck Church or Carr Manor school.</p> <p>There is a small parade of shops at Queenshill Approach and a BP garage, Co-op supermarket and other shops on Harrogate Road.</p>

INDEX OF MULTIPLE DEPRIVATION 2004 -2007 COMPARISON

Moor Allerton Partnership Area															
	Index of Multiple Deprivation			Income Deprivation Domain			Employment Deprivation Domain			Health Deprivation & Disability Domain			Education, Skills & Training Domain		
LOWERSOA	2004	Change	2007	2004	Change	2007	2004	Change	2007	2004	Change	2007	2004	Change	2007
E01011510 - Queenshill	2758	▲12	2770	3834	▲154	3988	2118	▼528	1590	1684	▼411	1273	10076	▼1,126	8950
E01011558 - Lingfields and Fir Trees	4949	▲194	5143	5637	▲559	6196	5899	▼798	5101	5204	▲553	5757	12084	▼3,331	8753
E01011559 - Cramner Bank	2551	▼62	2489	4790	▼609	4181	3410	▼65	3345	2694	▼810	1884	6211	▼1,316	4895
E01011560 - Tynwalds and Deansood	2183	▲973	3156	3857	▲710	4567	2298	▼233	2065	2340	▲1,029	3369	5628	▲1,190	6818
	Barriers to Housing & Services Domain			Crime & Disorder Domain			Living Environment Domain			Income Deprivation Affecting Children			Income Deprivation Affecting Older People		
LOWERSOA	2004	Change	2007	2004	Change	2007	2004	Change	2007	2004	Change	2007	2004	Change	2007
E01011510 - Queenshill	10187	▲6,567	16754	7282	▲3,928	11210	1474	▲153	1627	7920	▼1,233	6687	1943	▲776	2719
E01011558 - Lingfields and Fir Trees	9275	▲5,204	14479	8418	▲2,430	10848	462	▼9	453	6321	▲2,115	8436	8218	▼2,163	6055
E01011559 - Cramner bank	10719	▲3,234	13953	2721	▲1,292	4013	230	▲234	464	6611	▼280	6331	4318	▼2,816	1502
E01011560 - Tynwalds and Deansood	11093	▲5,701	16794	4150	▲5,447	9597	465	▲185	650	5785	▲1,081	6866	4532	▲668	5200
▲ denotes increase in rank															
▼ denotes decrease in rank															
1 - 32482															
1 - 974 - 3%															
1 - 3248 - 10%															
1 - 6496 - 20%															
6496 - 32482 - outside															

**Moor Allerton Partnership (MAP)
Neighbourhood Improvement Plan Priorities 2012/13**

Reduce the % of working age people in receipt of benefits

Promote healthy lifestyles

Provide activities for young people

Priority: Reduce crime and anti-social behaviour

Priority: Improve communication between partners and with the local community

DRAFT