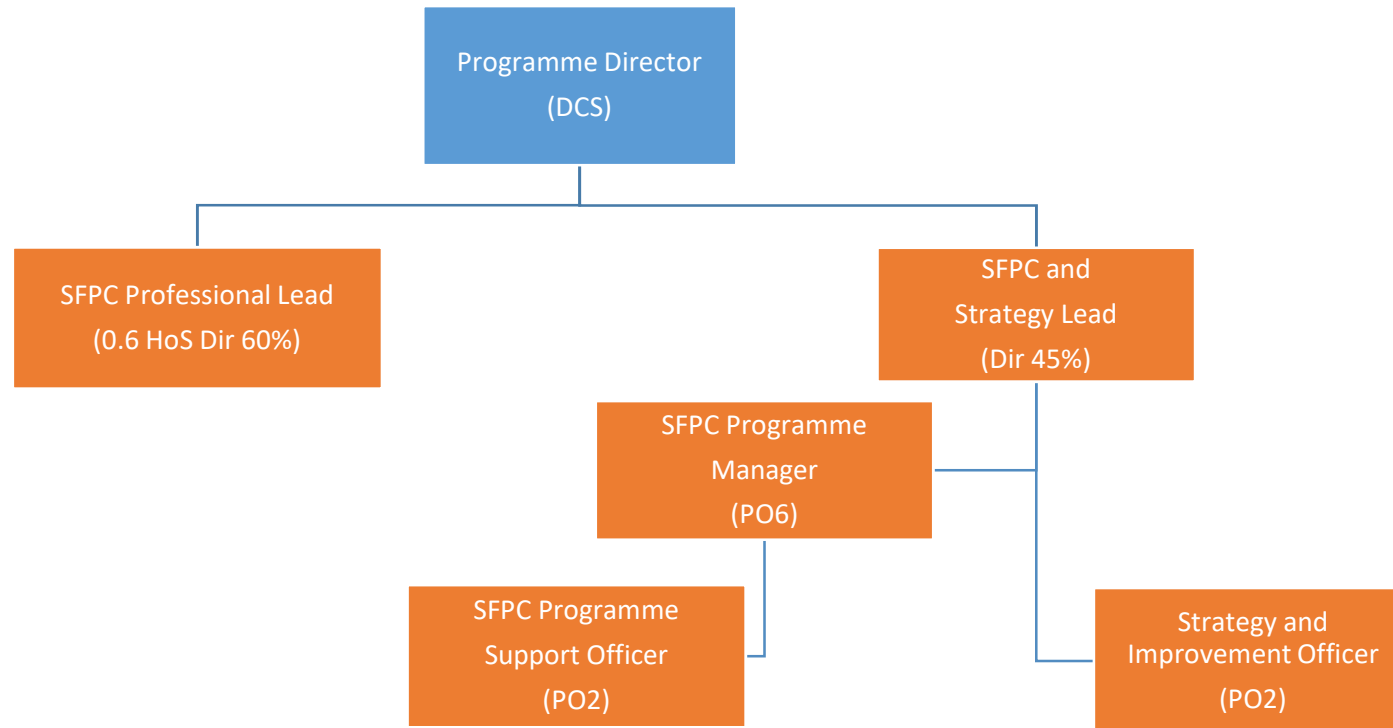


## SFPC Structures

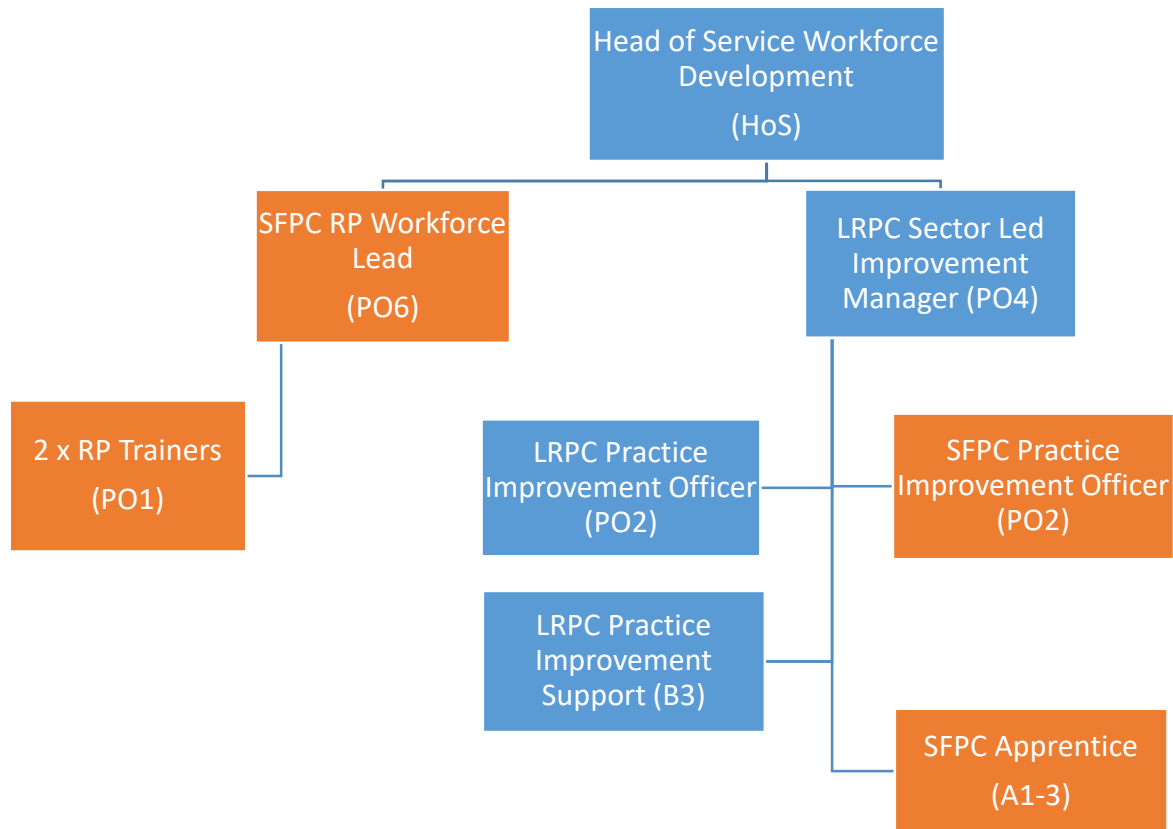
### SFPC Programme Leadership and Strategic Support

SFPC funding will be used to invest in leadership for the SFPC programme, including both professional social work leadership and programme management. In addition extra capacity will be created in the successful Leeds Relational Practice Centre, to improve coordination and support for both SFPC and wider sector led improvement work.



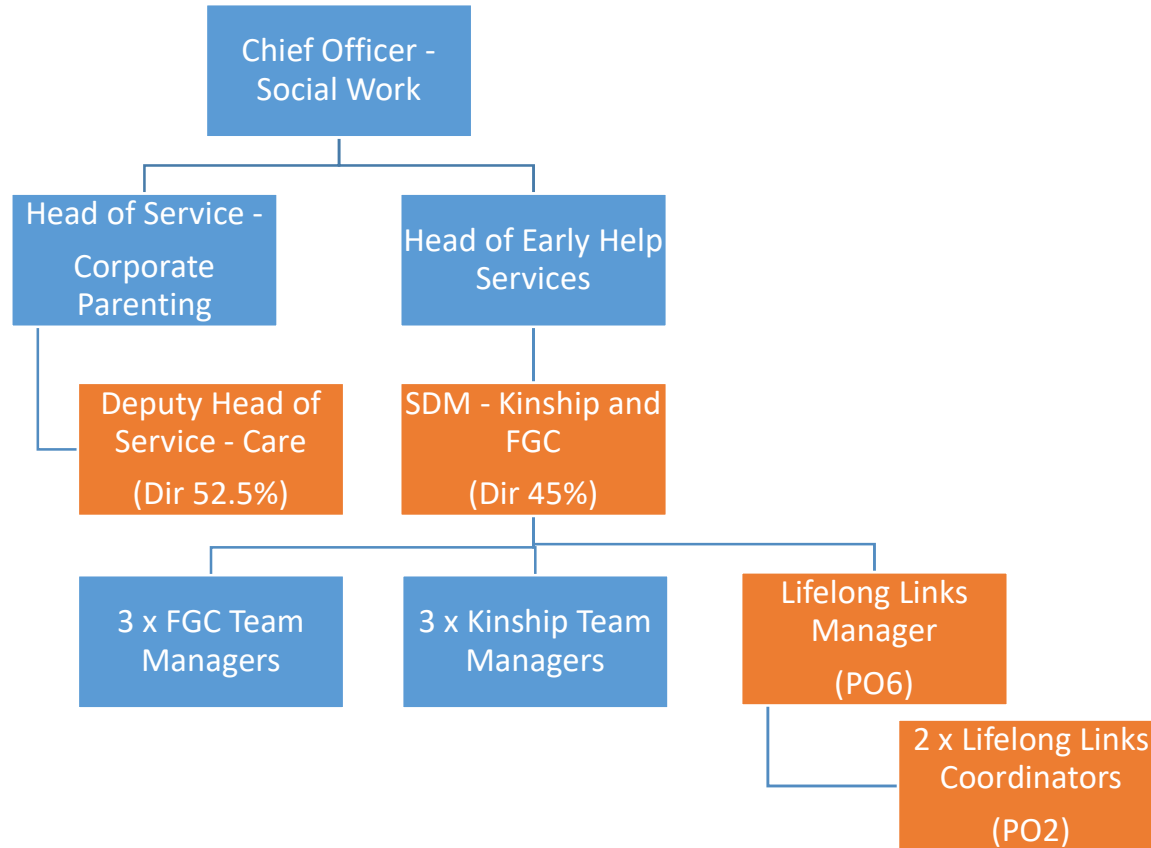
## SFPC Workforce Development

Workforce development is a key element of the SFPC programme as Leeds' Family Valued approach involves large scale training and culture change for staff. Additional capacity has also been included within the Leeds Relational Practice Centre to give them additional capacity to support the programme through coordination, logistical support and event management.



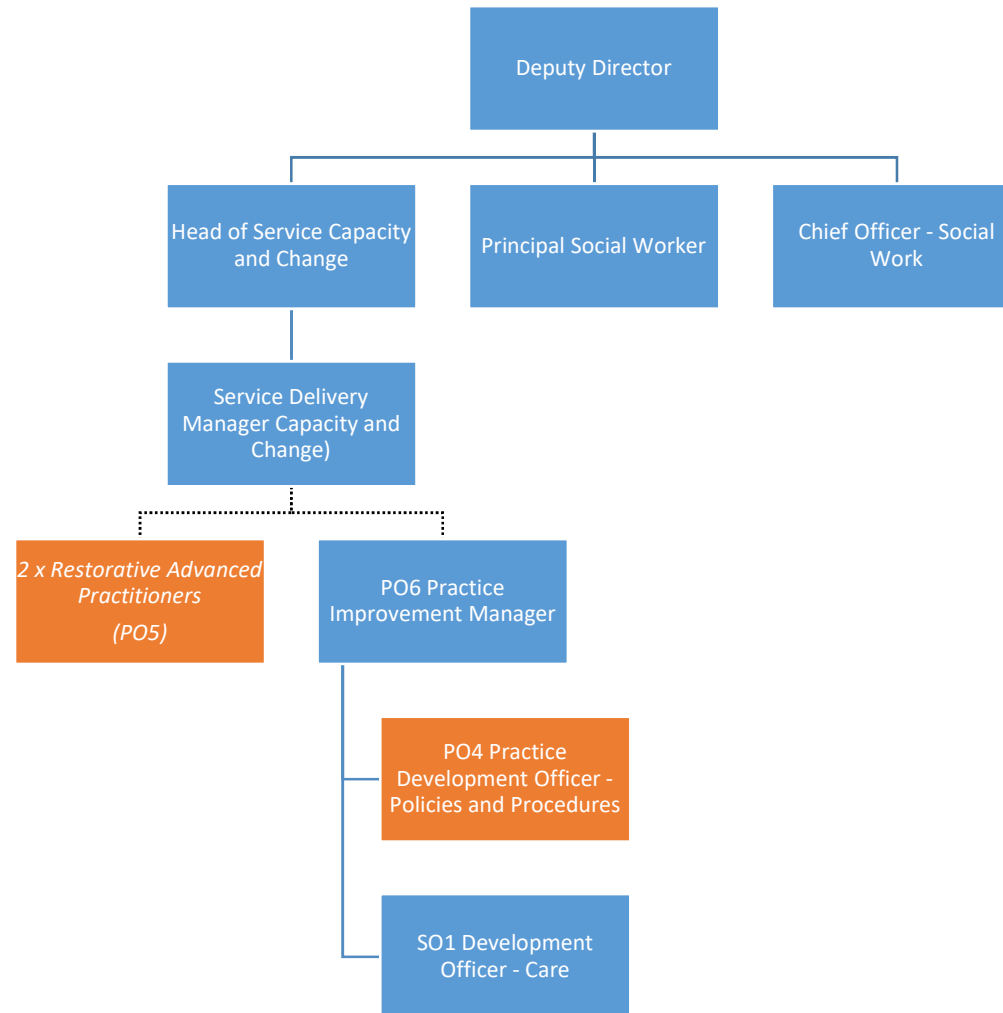
### Strengthened Social Work Leadership Capacity

SFPC funding will be used to invest in additional leadership capacity in order to free up capacity from across the leadership team and to address priority areas – reform of residential and care leaver services and improvements to kinship care and the FGC service.



## Strengthening Practice Leadership and Improvement

Alongside investment in sector led improvement, the SFPC monies will enable Leeds to bolster and reshape our local capacity for practice development, including three new advanced practitioners to lead on the next stage of restorative working, and an additional post for policies and procedures.



## Investing in the Three As

SFPC funding will be used to invest in additional leadership capacity to support the Three As strategy to improve learning outcomes for vulnerable children and young people. The proposed structure will build on the success of the Virtual School model for children looked after – adding a Virtual School Head for Children in Need. These two ‘Virtual Headteacher’ post will be managed by a senior educational lead, who will also provide strategic leadership of the SEMH agenda. This should improve focus on these groups of vulnerable learners, strengthen work with these children, families and schools as well as work to bolster and rationalise management in Learning Inclusion. This has been funded through the SFPC in order to enable existing leaders and staff to work with partner LAs.

