

Investing £270m in transport in Leeds



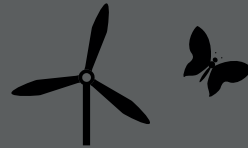
£100m

potential private sector investment to enhance our investment programme



2000

new park and ride spaces



more than **284**

new low emission buses will contribute to improved air quality



Reduced

congestion from increased public transport mode share



3

new rail stations at Leeds Bradford Airport Parkway, White Rose and Thorpe Park



over **90%**

of core bus services will run every ten minutes, up to 8pm



X2

aim to double bus patronage in Leeds by 2027



Improved

access at Cross Gates, Horsforth and Morley rail stations – moving towards all Leeds stations becoming fully accessible



Improved

average bus journey time



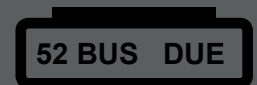
Most

buses in Leeds will be smart enabled



Improved

passenger waiting environment



1000

more bus stops with real time information



Investing over £180m in bus travel in Leeds



X2

aim to double bus patronage in Leeds by 2027



New

bus priority on key routes to ease congestion and improve journey times



over **90%**

of core bus services will run every ten minutes, up to 8pm



Free

wi-fi on all new buses. Smart technology improving ticketing, boarding and waiting times



1000

new park and ride spaces at Stourton with express bus serving the city centre



Improved

local bus journeys, connecting communities and neighbourhoods



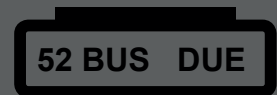
More

car park spaces and new routes from Elland Road park and ride



Improved

Leeds Bus Station and district centre travel hubs, as part of integrated bus network



1000

more bus stops with real time information

