

Report of: The West North West Area Leader (Citizens and Communities)

Report to: The Inner West Community Committee (Armley, Bramley & Stanningley and Kirkstall)

Report author: Sarah Geary (3367872)

Date: 21st March 2018

To note

Community Safety Cover Report

Purpose of report

1. This purpose of this report is to provide a brief overview of the areas for update that West Yorkshire Police will provide at the Committee meeting. It also seeks to provide an update on ongoing work through the Leeds Anti Social Behaviour Team.

Main issues

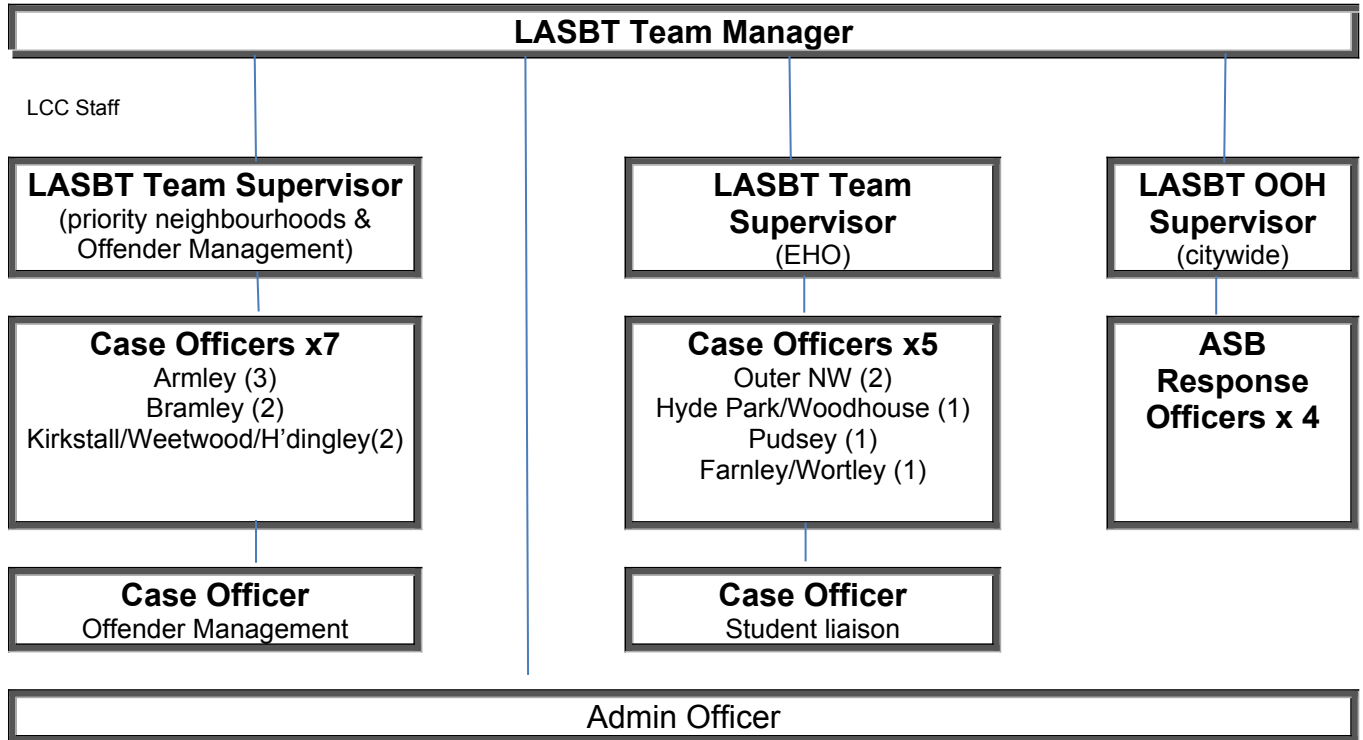
Report of the Leeds Anti-Social Behaviour Team (West North West)

2. Leeds City Council is committed to reducing Anti-Social Behaviour (ASB). Its 'City Priorities Plan' sets out its ambitions to achieve sustainable reductions in crime and disorder, tackle anti-social behaviour and to build stronger cohesive communities.
3. LASBT is a multi-agency service comprising staff from Leeds City Council, Housing Leeds, Cleaner Neighbourhood Teams West t Yorkshire Police (WYP), West Yorkshire Fire service (Arson Task Force), Leeds Youth Offending Service (YOS) and Victim Support. It delivers a multi-tenure service operating across Leeds in partnership with a much broader range of agencies and support services.
4. LASBT will typically deal with behaviour that cannot be reasonably resolved through tenancy management, or mediation. This includes (but is not limited to) those listed below;-
 - Harm to individuals

- Harassment, threats of violence and/or intimidation, racist behaviour or language and verbal abuse.
 - Harm directed at communities
 - Drug dealing and misuse, street drinking, prostitution, kerb crawling, aggressive begging, public drunkenness and disorder and persistent domestic noise nuisance.
 - Environmental harm
 - Graffiti and vandalism/damage to public property.
5. Where ASB incidents are reported through LASBT, which could constitute a criminal offence for which an accused person could be charged and prosecuted, the matter may be allocated to a West Yorkshire Police ASB link officer embedded within LASBT to determine whether the matter should be more appropriately investigated by the Police.
 6. Leeds Anti-Social Behaviour Team (LASBT) may not always be the most appropriate agency to respond to, or deal with every report of anti-social behaviour it receives. In addition to the definitions outlined above LASBT will consider the nature, persistence and harm involved in reported ASB incidents.
 7. Some low-level incidents and nuisances such as neighbour disputes, boundary issues, and infrequent noise problems may be better dealt with by the responsible landlord as a tenancy management or tenancy breach issue. Where incidents include acts of a criminal nature, a more appropriate response might be provided by West Yorkshire Police.
 8. LASBT will aim to respond quickly to all reports of ASB, contacting the reporting person or victim to discuss their report and more fully understand the nature and complexity of their problem. Where reports relate to a one off/low level incident, LASBT may issue appropriate advice and self-help guidance. Some reports may be referred on to the local housing provider to be dealt with as a tenancy issue. Reports linked to persistent problems or incidents where there is the potential for harm, will be allocated to an ASB case officer for investigation in accordance with LASBT's established 'what goes where guidance'.
 9. Once a case investigation has been allocated, a LASBT case officer will arrange to meet with the reporting person or victim to explain the services' procedures, understand the background to reported problems, identify any vulnerabilities and/or support needs (not already disclosed) and agree an appropriate course of action.
 10. Unless the circumstances of the report and evidence provided warrant immediate action to safeguard victims and witnesses, a LASBT case officer will conduct a thorough investigation to establish the facts and gather evidence. The case officer will be advised by a senior manager or supervisor as to whether reported problems might be resolved using interventions and/or warnings or whether enforcement action may be necessary.

11. LASBT WEST Current Structure

LASBT West is one of 3 area based multi-agency teams. At present, we are resourced as follows:



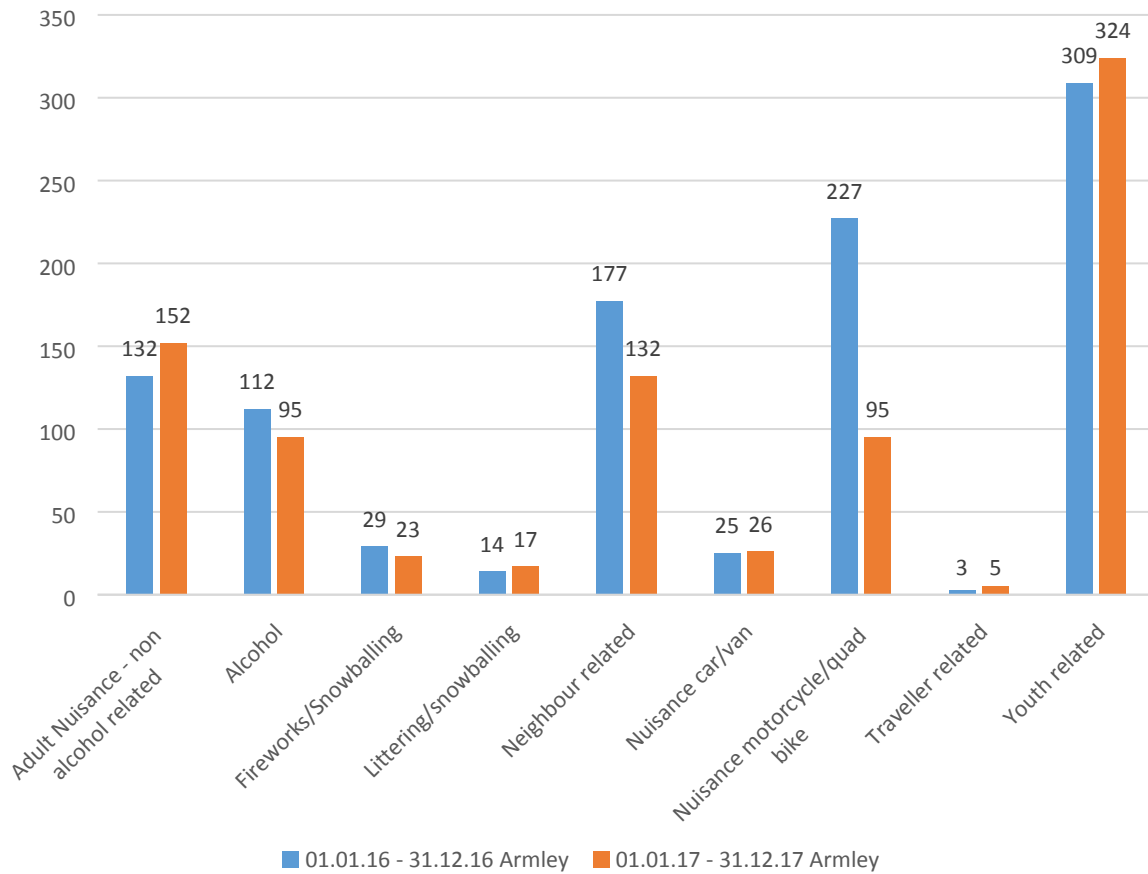
Additional Staff Allocated to LASBT West

West Yorkshire Police	Link Officer (PC) x2 Researcher x1
Victim Support	Outreach Worker x1
Youth Offending Service	YOS Worker x1 (part time)

12. Ward Profile of Anti-Social Behaviour

Armley Ward

Police Call Data 2016/17:



13. LASBT Case Data:

At Time of reporting LASBT are currently investigating 24 ASB cases which equates to 49% of case work across the Inner West Wards.

Of those 24 cases the breakdown of case types is as follows:

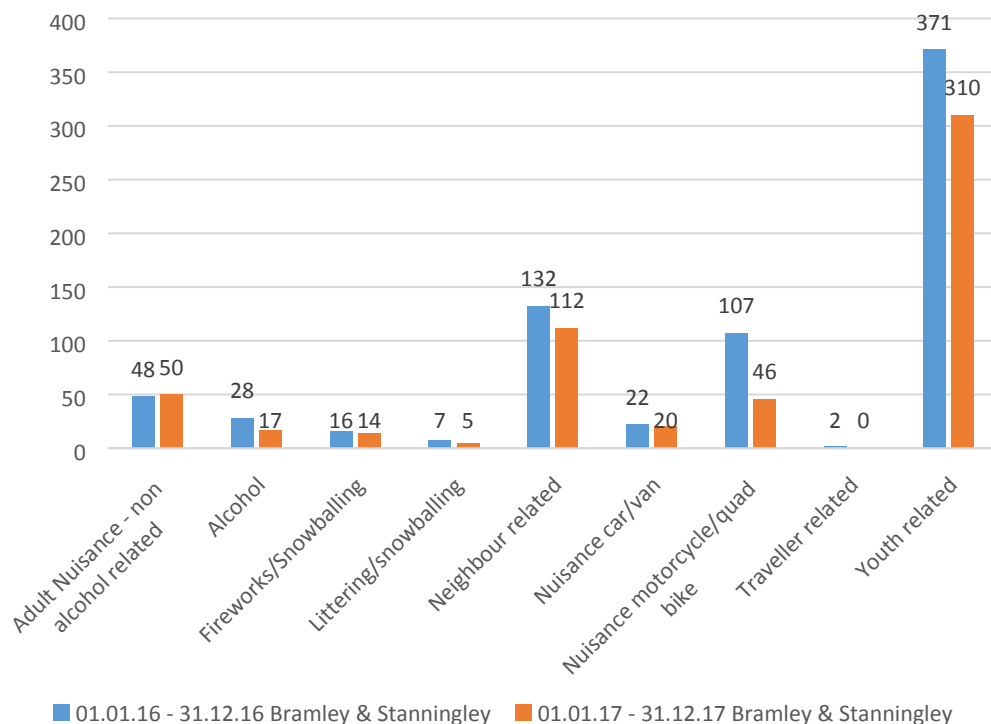
Alcohol related	1
Domestic Violence	1
Drugs/substance misuse/dealing	5
Hate Crime (Race)	1
Misuse of Public Space	1
Noise	2
Rowdy Behaviour	4
Sexual Acts and Prostitution	3
Threats/Actual Violence	3
Vandalism/damage to property	1
Verbal Abuse	2

14. Area Issues:

- **Westerly Croft and Westerly Rise** – There has been an increase in reports of drug use and fouling of the communal areas of these 2 multi-storey flats. The perpetrators are largely unidentified and transient. LASBT, in partnership with Housing and Police Officers from Operation Leodis* are looking to tackle this issue, and will be looking at applying for closure orders which limit access to the communal areas of the blocks.
- **Hall Lane area** – LASBT are currently taking possession action in the county court in relation to cannabis cultivation at a council property in the area.
- **Raynville Court** – there had been an increase in reports of ASB and damage at this block of flats, allegedly perpetrated by groups of youths. Whilst the people causing the damage were unidentified, a number of youths were identified as frequenting the blocks and were engaged with by staff. At the same time, a closure order was gained that limited access to the communal areas of the flats. At present time, there have been no recent reported damages, or reports of the youths hanging around the block.
- **Clyde Estate** – LASBT are currently in possession action in the county court in relation to a council property where there are numerous issues, including ASB, criminality, damage to the family home, and infringements of the Council's policies on garden condition.
- **ASB and Mental Health Issues** - At present, there are an increasing number of ASB cases across the city where there ASB issues being caused/experienced and mental health issues are a factor. LASBT are leading on a pilot which at present is solely running in the Armley ward area, to look at improved information sharing between partners (including health, and social care) in order to assist an effective, joint response.

* Operation Leodis are a team of 3 PCs and 1 Sgt who are part of LASBT, and funded by Housing Leeds, to provide additionality in dealing with ASB/criminality in Council owned High Rise Accommodation, in particular those that come within the "enhanced blocks" scheme.

15. Bramley & Stanningley Ward - Police Call Data – 2016/17



16. LASBT Case Data

At Time of reporting LASBT are currently investigating 15 ASB cases in this ward area which equates to 30.6% of case work across the Inner West Wards. Of those 15 cases the breakdown of case types is as follows:

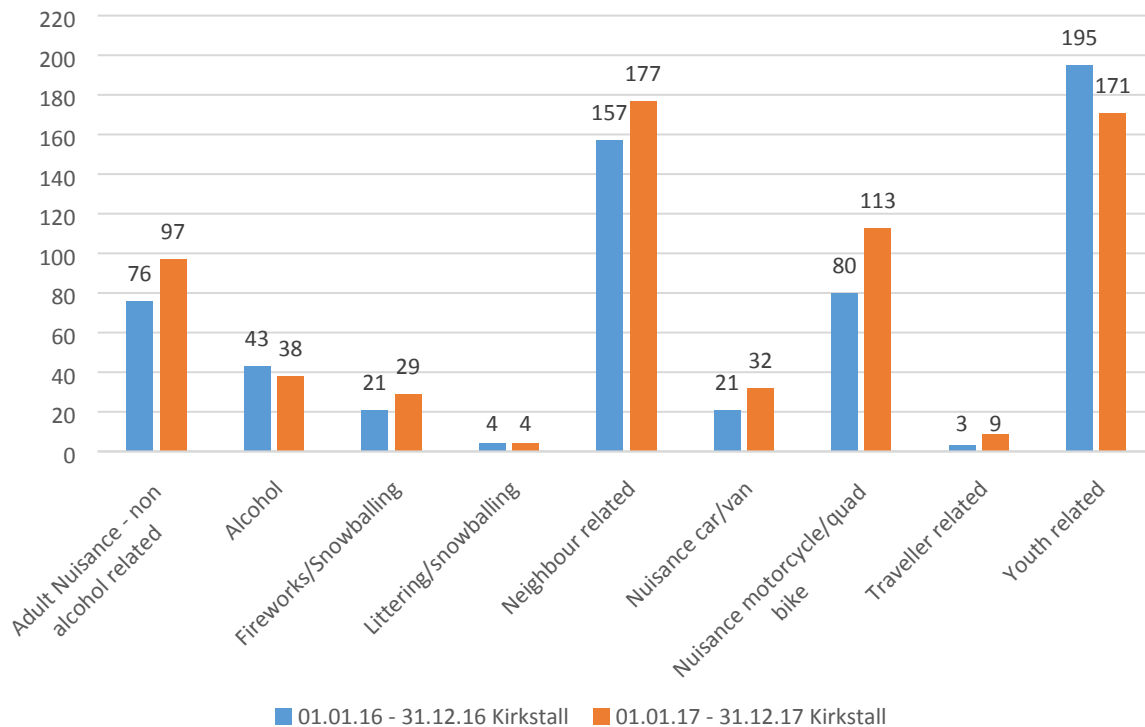
Criminality	1
Drugs/substance misuse/dealing	1
Hate Crime	3
Noise	1
Rowdy Behaviour	5
Threats/Actual Violence	2
Vandalism/damage to property	2

17. Area Issues:

- Broadleas Estate** – LASBT had been involved in legal action for possession of a home in relation to supply of cannabis, general ASB and intimidation, however prior to trial the tenant has voluntarily surrendered their tenancy. Evidence used to progress this case included CCTV footage from the Leedswatch static camera on the estate.
- Rodley Area** – LASBT are taking possession action in relation to cannabis cultivation at a council property in this area.
- Fairfields Estate** – LASBT are taking possession action in relation to stolen goods being kept in an LCC property in the area. These stolen goods are linked to vehicle crime/thefts in the wider area.

- **Broad Lane area** - Considering is being given to progressing injunction applications in relation to 2 youths from Bramley in relation to issues caused around their homes, and at Kirkstall Bridge Shopping complex. Discussions with YOS are ongoing.
- **Ganners Estate** – LASBT are seeking an injunction in relation to a council tenant who is regularly subjecting his neighbour to racist abuse.

18. Kirkstall Ward - Police Call Data 2016/17:



19. LASBT Case Data

At Time of reporting LASBT are currently investigating 10 ASB cases in this ward area which equates to 20.4% of case work across the Inner West Wards. Of those 15 cases the breakdown of case types is as follows:

Noise	5
Nuisance Vehicles	1
Drugs/substance misuse/dealing	1
Rowdy Behaviour	1
Threats/Actual Violence	1
Verbal Abuse	1

20. Area Issues:

- **Kirkstall Bridge complex** – groups of youths from Bramley are attending the complex and causing significant issues for shop staff and shoppers at the complex which includes disruption to the business, intimidation of staff, and

causing damage around the precinct. Consideration being given to 2 injunction applications against youths from the Bramley area (as above).

- **Burley Greenhow area** – following an initial complaint around abuse over parking issues, LASBT have uncovered numerous potential fraud issues in relation to a council tenant and are facilitating action between various agencies including DWP, HMRC, Trading Standards and the Police and have also liaised with authorities in Suffolk as issues have been identified in that area also.
- **Closure Order, Hawksworth Wood area** – There is currently a closure order in place in relation to a property in the Lea Farms area of the estate which has been sought due to rowdy behaviour, drug use, and violence. The tenant, who is vulnerable had lost control of the property and they are allowed to remain, but the order limits who can attend at the address.
- **Noise Issues, Burley** - LASBT currently have a specific officer dedicated to issues relating to the City's student population, some of which falls into Kirkstall Ward, in particular around the Stanmores, and Beechwoods. Traditionally, these peak at key points in the academic years such as freshers, end of exams, and end of term, and LASBT plan for these periods by increasing home visits to accused, and utilising our daytime staff to bring additionality to the OOH noise service to proactively patrol and respond to ongoing noise issues in the predominantly student areas of Headingley, Hyde Park and Burley.

21. Offender Management – Inner West

22. Aside from general casework, LASBT also perform an offender management function with a dedicated officer who manages cases with existing court orders, such as injunctions and possession orders. The main function of the role is to ensure compliance and progress breaches of orders through the court. Examples of the kind of work done by the officer could include: consultation with YOS around breaches of or variations to injunctions relating to young people; or if there is a suspended order for possession on a council property, ensuring compliance with the terms of that order, which could include visiting to check for the presence of controlled drugs.

23. At present, LASBT West have 19 offender management cases across the West North West Area, 13 of which are within the Inner West Wards. Of those cases 7 are in Armley ward, 4 are in Bramley and Stanningley Ward, and 2 are in Kirkstall ward. A breakdown of those cases is below:

24 Armley:

- 5 Injunctions in relation to adults involved in criminality in New Wortley
- 1 Suspended Possession Order relating to drugs cultivation on the Cedars estate
- 1 suspended possession order relating to abuse of council staff/drugs in the Aviary estate

25. Bramley and Stanningley:

- 1 court undertaking relating to abuse towards neighbours on the St Catherine's estate
- 1 Injunction (young person) relating to causing ASB around Bramley Shopping Centre
- 1 linked injunction and suspended possession order relating to violence against LCC staff on the Rossefields Estate
- 1 Suspended Possession Order relating to drugs cultivation on the Broadleas Estate

26. Kirkstall:

- 1 injunction relating to abuse of LCC staff in the Burley area
- 1 suspended possession order in relation verbal abuse and intimidation of a neighbour on the Hawksworth Wood estate.

27. Corporate considerations

28. Legal implications, access to information and call in

There are no access to information and call-in implications arising from this report.

Recommendations

The Committee is asked to note the content of this report and the updates that will be given verbally at Committee.