

## Appendix 1

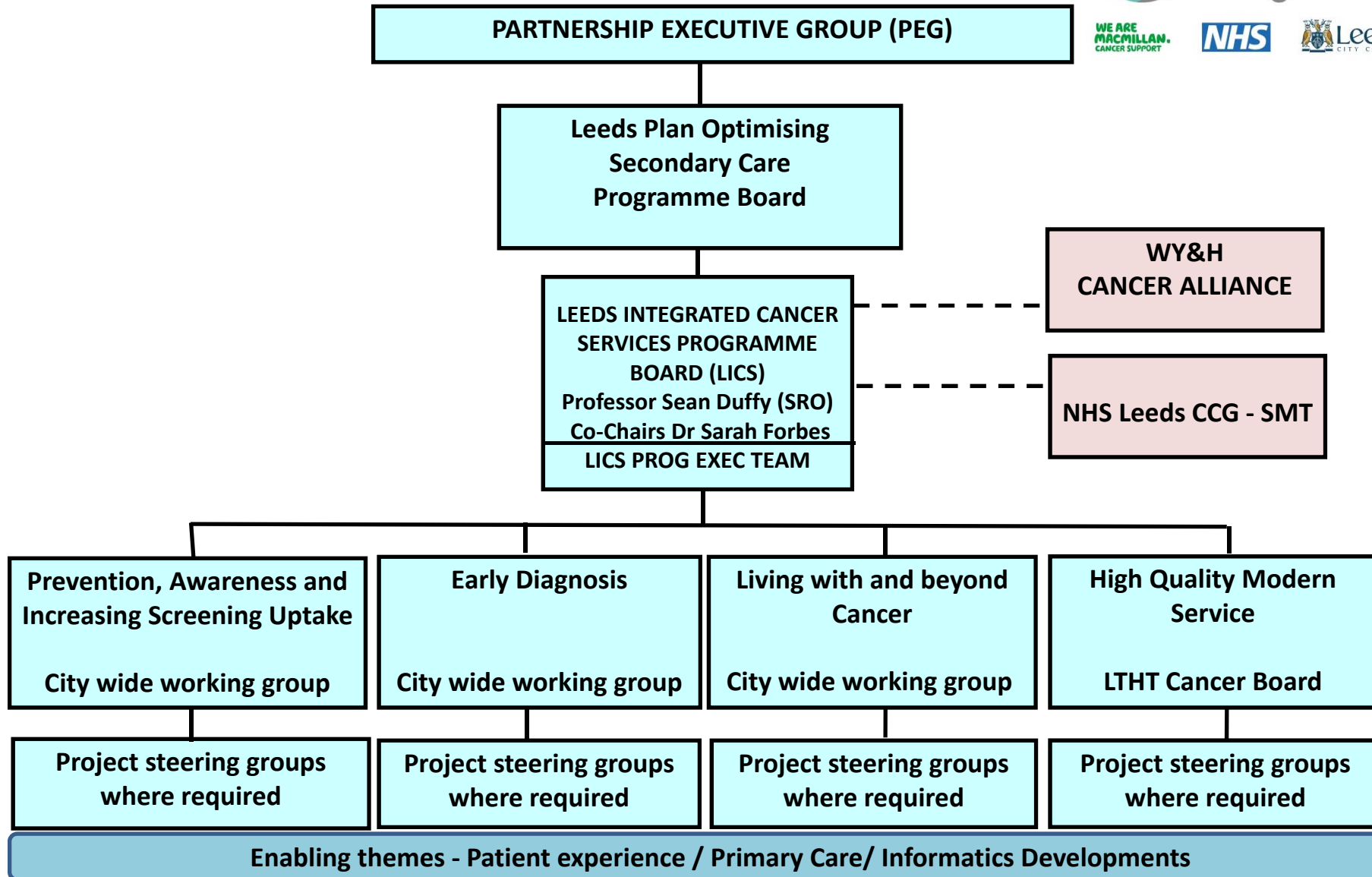


# Leeds Cancer Programme – to 2020

**We want to deliver the best cancer outcomes  
for Leeds patients.**

**We will achieve this by working collaboratively across  
the range of health and social care organisations to  
ensure we provide patient driven, quality care to the  
people of Leeds.**

**GOVERNANCE STRUCTURE  
MACMILLAN LEEDS CANCER PROGRAMME  
Updated 18/04/18 V 2.1**



PEG is Executive strand of Leeds Health and Wellbeing Board

# Core Programme Outcomes



CORE PROGRAMME OUTCOMES	Leeds	England	Data source
Reduce the rate of cancer incidence across Leeds in line with national average	4109 cancers diagnosed, Cancer stats 2015 – comparator data to be defined		
Reduction in the rate of cancers diagnosed as emergencies to 15%	21.3%	19.2%	(NCRAS/ PHE Q1 2017)
Increase numbers of cancers diagnosed at a curable stage (stage 1 and 2, National Taskforce Ambition to 62% by 2020 )	56.5%	52.1%	(NCRAS/PHE Q3 2016)
Improve 1 year survival rates (Taskforce Ambition to 75% by 2020)	72.4%	72.3%	ONS data – all cancers, adults diagnosed in 2015 followed u in 2016
Maintain/ Improve the Leeds Top 10 decile position in CPES feedback	8.8/ 10	8.74/10	(2016 CPES results)
Reduction in preventable deaths from cancer	Measure to be agreed		
Reduction in smoking rates to 13% line with national targets (plus routine and manual targets)	17.8%	15.5%	Adults aged 18+/ 2016 ONS data

# Prevention, Awareness & Increasing Screening Uptake



Work stream Lead, Louise Cresswell, Public Health Cancer Team, Leeds City Council

We want to see a fall in the number of new cases of preventable cancer year on year and a faster fall in more deprived populations.

## Key projects and initiatives

- **Preventing** cancer through implementation of smoking cessation services/ Leeds Integrated Healthy Living Service
- **Raising awareness** of signs and symptoms of cancer and screening through Public Health, commissioned 3 year Community Awareness Cancer Service (CACS)
- **Increasing screening uptake** – bowel/ breast/ cervical
  - Through CCG funded primary care based cancer screening champion programmes in 50 target practices (most deprived IMD 1-4) across Leeds – starting with bowel cancer 2018/19

April 2018 - Emerging work to develop a 'universal' offer Leeds Prevention/ Screening Hub model for implementation at a locality level

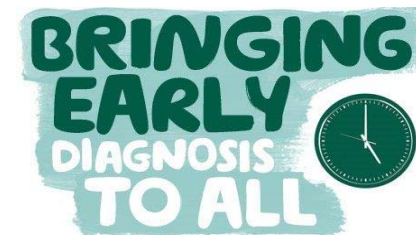


# Early Diagnosis

Work stream Lead, Angie Craig, Assistant Director Operations, LTHT  
Macmillan Project Lead, Helen Ryan, Leeds CCGs

**We want to ensure our patients receive a cancer diagnosis at the earliest stage and maximise potential for curative treatment.**

- **Expansion of ACE pilot project** for patients with non-specific but concerning symptoms
  - City wide rollout (circa 40 practices across Leeds currently able to refer)
  - Testing of the ACE nursing assessment model within primary care / localities
- Pilot site for **28 days Faster Diagnosis Standard** (mandated collection April 2019)
  - Set up of data systems to enable routine collection of data
  - Rollout plan to all cancer sites
- **Tele-dermatology** (CTF enabled funding)
  - 2ww referrals will be submitted with an image of the lesion for consultant led triage
  - City wide launch date planned 01/06/18
- Rollout **automated 2ww referral forms (DART)**



# Living with and Beyond Cancer

Work stream Lead, Karen Henry, Lead Cancer Nurse, LTHT  
Macmillan Project Lead, Sarah Bradley-Wright, Leeds CCGs

We will provide the best support to patients to lead as full and active lives as possible with, or beyond a diagnosis of cancer.

## Key projects and initiatives:

- Use of best practice to **risk stratify follow-up pathways**
- Piloting **CNS led Cancer Care Reviews in Primary Care** (expansion of initial pilot 18/19 and testing model in 2 x localities)
  - Improved signposting of patients to support services in the community
- Focus on improved sharing/ quality of information with Primary Care via Leeds Care Record (**eHNA forms and Treatment Summaries**)
- Improving quality and consistency of information and care given to patients
- **Workforce developments** e.g. Practice Nurse training, Health Coaching for CNS team



# High Quality Modern Service

Work stream Lead, Mike Harvey, Assistant Director Operations, LTHT  
Overseen by LTHT Cancer Board

Leeds will be recognised for its excellence in pioneering research, training, development, delivery of cancer treatments & survivorship.

## Key projects and initiatives:

- **Evaluation and streamlining of secondary care MDT patient reviews** through protocolised management
- Explore ways to **deliver cancer treatments ‘closer to home’** for our patients
- Work with partners to **deliver world class cancer research**
- Ensure we are at the **forefront of using new technologies** in the delivery of cancer treatments
- **Ensure best and targeted use of the Leeds £**
- Using **data to drive decision making** and prioritisation around pathways

