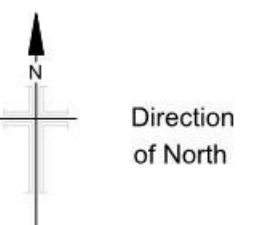


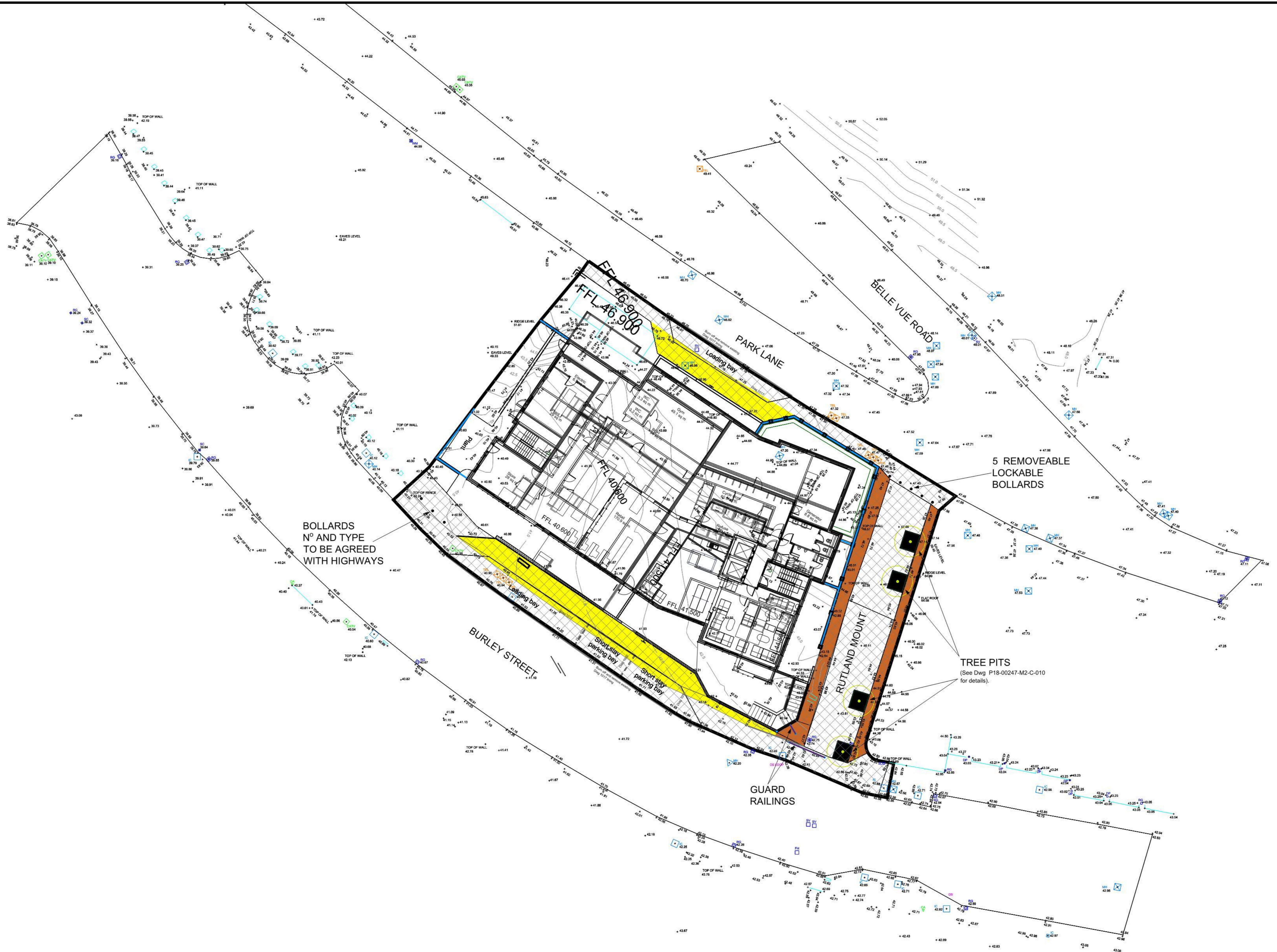
This drawing and the copyright in it are the property of Met Engineers Limited. It must not be copied, reproduced, stored in a retrieval system, or used in any way without the written consent of Met Engineers Limited and it must be returned to them on request.

- Do not scale dimensions from this drawing in either paper or electronic format.
- To be read in conjunction with all relevant Engineers, Architects and Other drawings and specifications.
- All building products to be used in strict accordance with the manufacturer's recommendations.
- Any discrepancies are to be reported to the Engineer immediately.
- Main Contractor to provide a detailed method statement for all works prior to commencement on site.

Design Risk	
Hazard/Risk	Mitigation / Residual Risk
1. XXX (Risk-High)	XXX (Risk-Low)
2. XXX (Risk-High)	XXX (Risk-Low)
3. XXX (Risk-Mod)	XXX (Risk-Low)
4. XXX (Risk-Mod)	XXX (Risk-Low)
5. XXX (Risk-Mod)	XXX (Risk-Low)



- Extent of new adoptable highway
- Surface material to be agreed with highways
- Guard Railing
- Extent of Potential Resurfacing works



BOLLARDS  
N° AND TYPE  
TO BE AGREED  
WITH HIGHWAYS

5 REMOVEABLE  
LOCKABLE  
BOLLARDS

TREE PITS  
(See Dwg P18-00247-M2-C-010  
for details).

6	19/09/19	SS	Brick tree planters omitted for tree pits on Rutland Mount	ATK
5	22/01/19	DM	Bottom left hatch of Rutland Mount changed to correct colour.	ATK
4	22/01/19	DM	Updated to suit highways comments Emailed on 21/01/19.	ATK
3	14/01/19	DM	Existing highway uncoloured on Burley Street and Park Lane	ATK
2	19/06/18	GD	Loading bay revised to Burley Street	ATK
1	29/05/18	GD	Initial Issue	ATK
Rev	Date	Drawn	Description	Chk'd



Met Engineers Ltd  
Southgate House  
Pontefract Road  
Stourton, Leeds  
West Yorkshire  
LS10 1SW  
Tel 0113 200 8900  
0113 270 1199  
e-mail: admin@metengineers.com  
www.metengineers.com

Client  
**Burley Place Limited**

Project  
**46 Burley Street  
Leeds LS3 1 LB**

Title  
**Section 278  
Draft Section 278 Plan**

Drawn	AK	Checked	ATK	Scale	1/200
Date	May 18	Date	May 18		
Status				Original Size	A1
Comment					Rev
P18-00247-M2-C-006					6