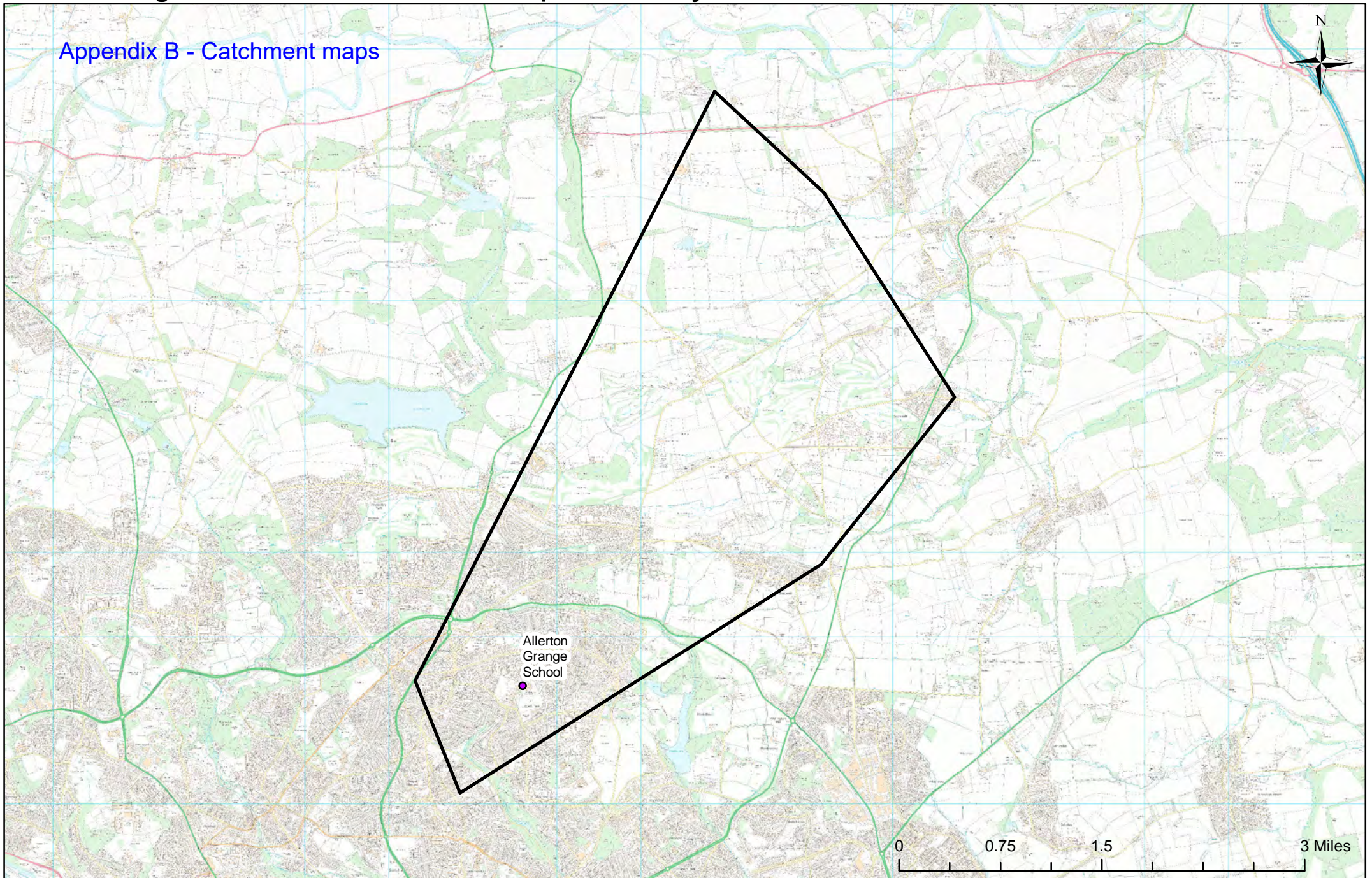


# Allerton Grange School's catchment area for Sept 2022 to July 2023

## Appendix B - Catchment maps


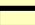


© Crown Copyright. Leeds City Council - 100019567 (2019)



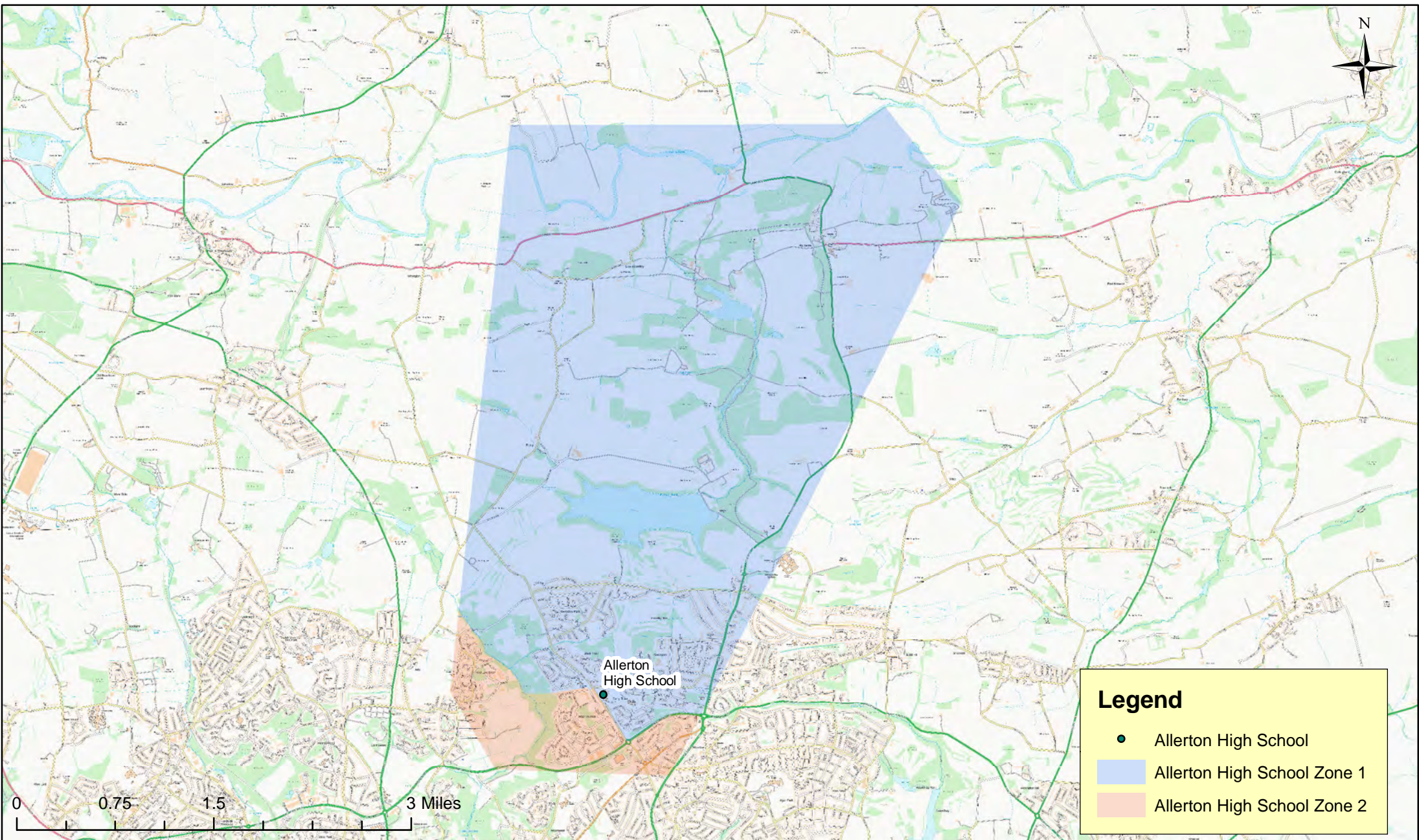
Applicants living in the catchment priority area are not guaranteed a place, but their application would meet the 'Catchment Priority' of the school Admissions Policy. It is not possible to represent the full detail of the catchment areas on this visual map. You can look up your individual address to check for priority at [www.leeds.gov.uk/apply](http://www.leeds.gov.uk/apply)

### Legend

-  School
-  Catchment Area



**Allerton High School Catchment Priority Zones for Sept 2022 to July 2023**



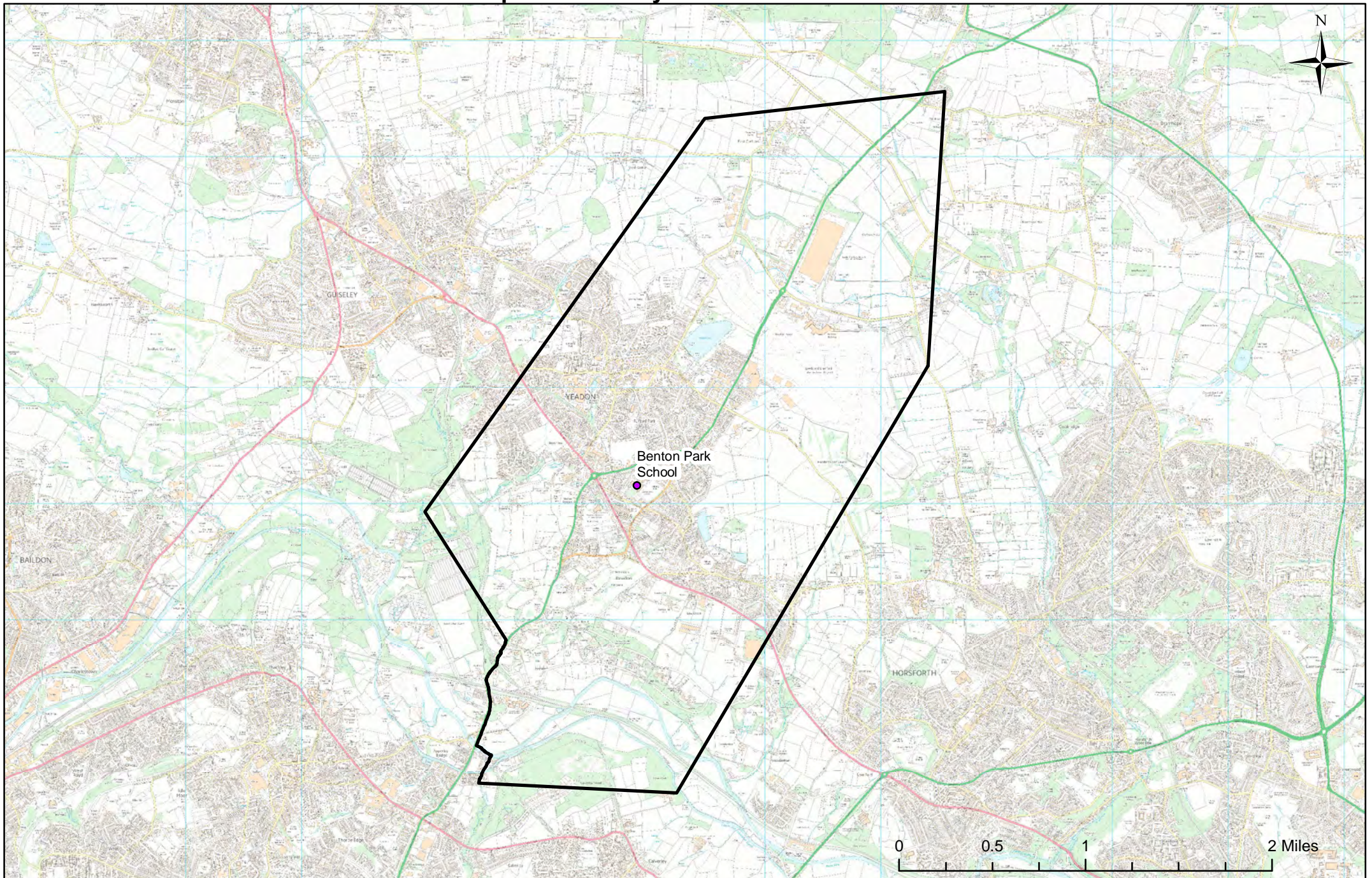
© Crown Copyright. Leeds City Council - 100019567 (2019)

Applicants living in the catchment priority area are not guaranteed a place, but their application would meet the Catchment Priority' of the school Admissions Policy. The school's catchment area has 2 zones and applicants living in zone 1 are allocated places first, then applicants living in zone 2 of the catchment area. It is not possible to represent the full detail of the catchment areas on this visual map. You can look up your individual address to check for priority at [www.leeds.gov.uk/apply](http://www.leeds.gov.uk/apply)





# Benton Park School's catchment area for Sept 2022 to July 2023



© Crown Copyright. Leeds City Council - 100019567 (2019)

Applicants living in the catchment priority area are not guaranteed a place, but their application would meet the 'Catchment Priority' of the school Admissions Policy. It is not possible to represent the full detail of the catchment areas on this visual map. You can look up your individual address to check for priority at [www.leeds.gov.uk/apply](http://www.leeds.gov.uk/apply)

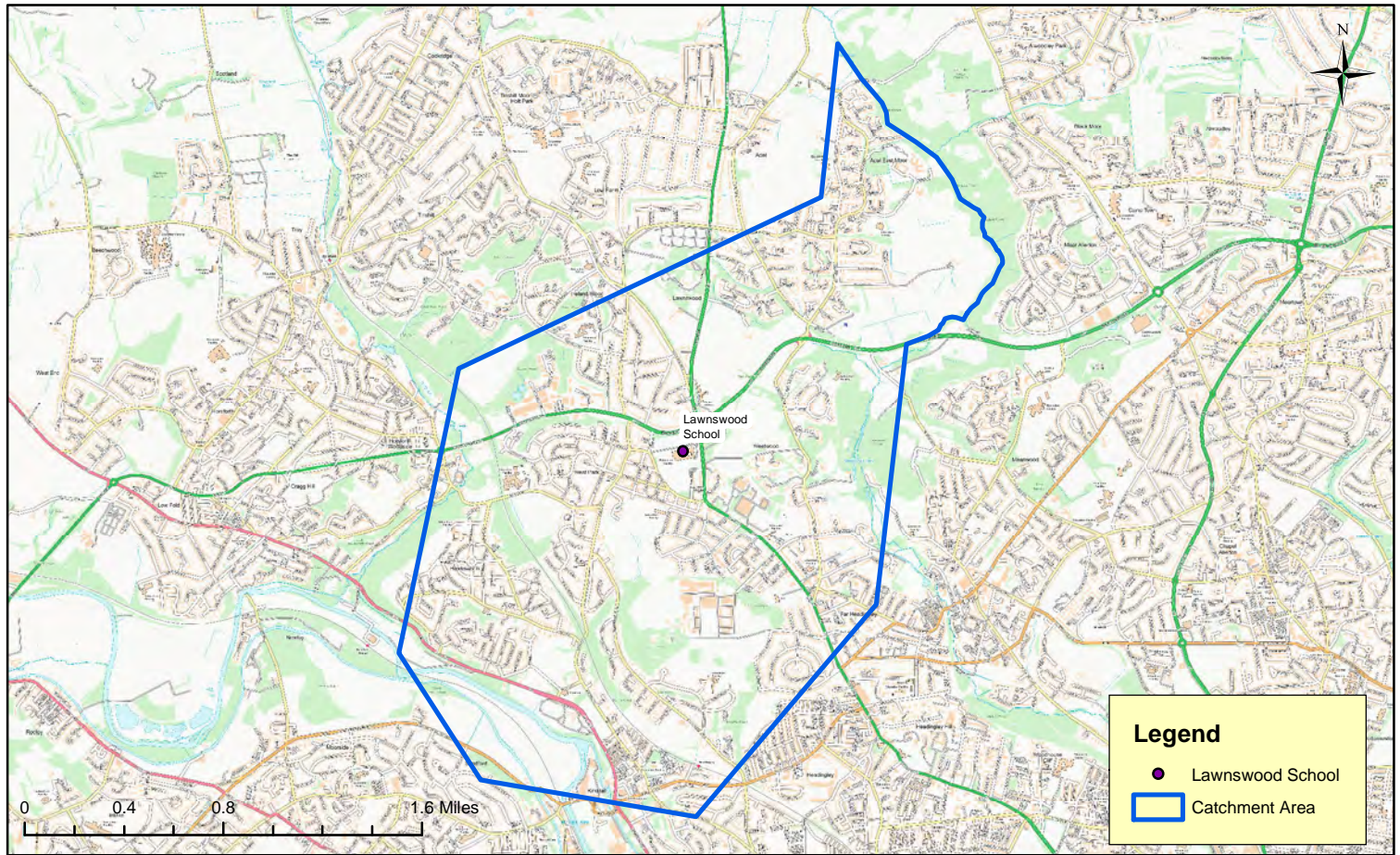


**Legend**

- School
- ▭ Catchment Area



# Lawnswood School catchment area for Sept 2022 to July 2023

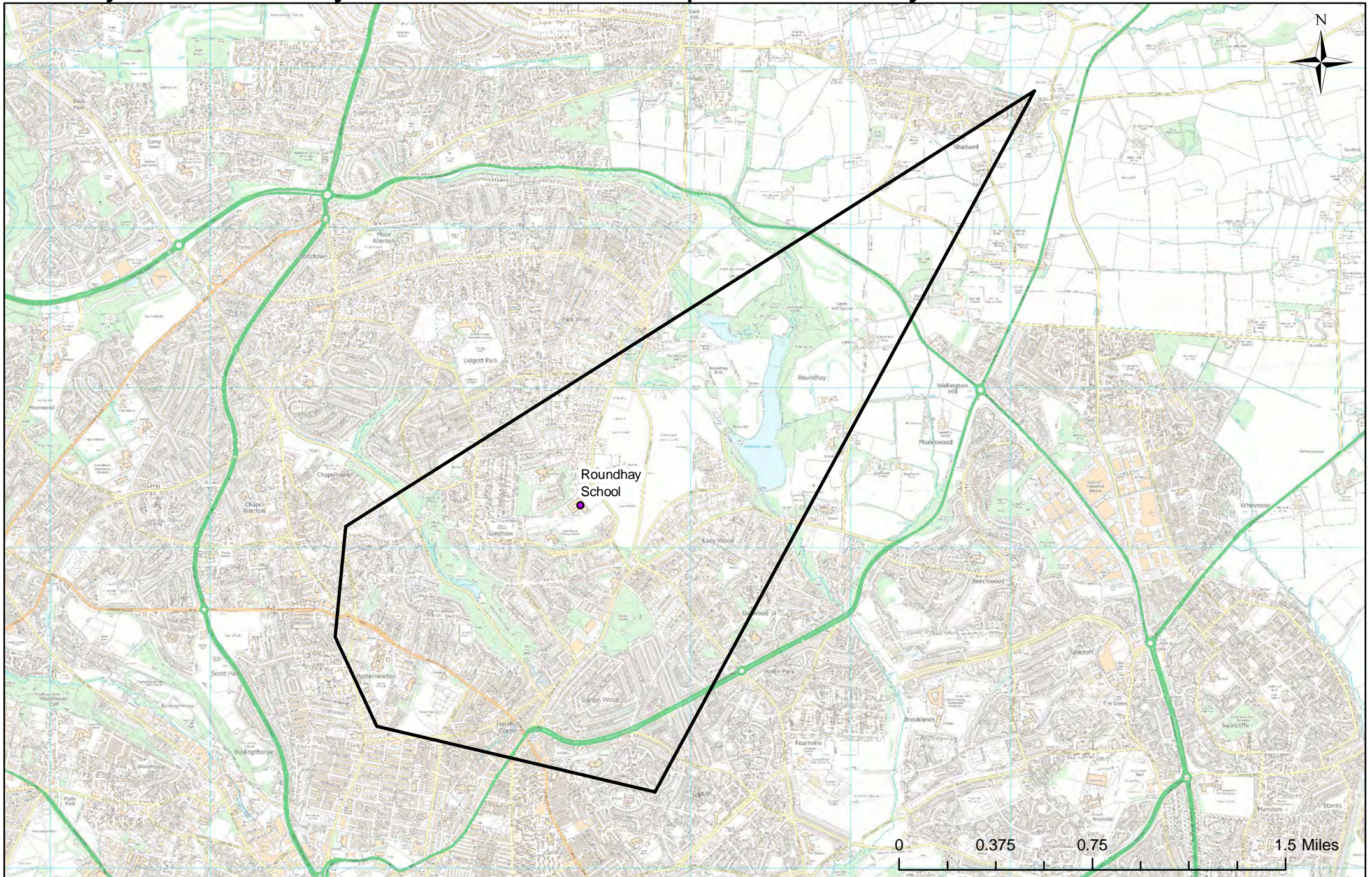


© Crown Copyright. Leeds City Council - 100019567 (2019)

Applicants living in the catchment priority area are not guaranteed a place, but their application would meet the Catchment Priority of the school Admissions Policy. It is not possible to represent the full detail of the catchment areas on this visual map. You can look up your individual address to check for priority at [www.leeds.gov.uk/apply](http://www.leeds.gov.uk/apply)



# Roundhay School - Secondary School catchment area for September 2022 to July 2023



© Crown Copyright. Leeds City Council - 100019567 (2019)

Applicants living in the catchment priority area are not guaranteed a place, but their application would meet the 'Catchment Priority' of the school's Admissions Policy. It is not possible to represent the full detail of the catchment areas on this visual map. You can look up your individual address to check for priority at [www.leeds.gov.uk/apply](http://www.leeds.gov.uk/apply)



**Legend**

- School
- Catchment Area