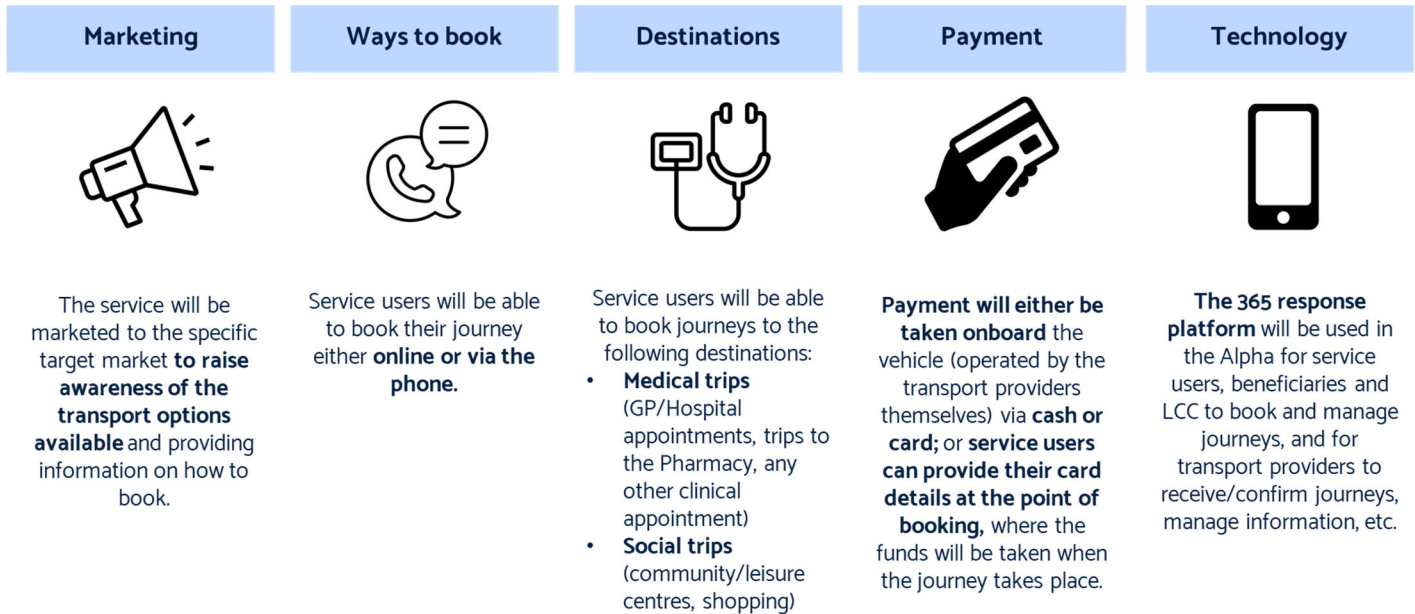


Appendix 1: Door to Door Community Transport High Level Model for Pilot

The following elements highlighted below demonstrate what parts of the service will be included for the pilot (referred to in the diagram as *Alpha*).



Geography

Analysis was carried out across the Leeds area to determine the geographies to be included in the pilot. The following areas were chosen, with reasons for each.

1. Hunslet and Riverside	This ward can provide a like-for-like comparison as it was used in the pilot. It is also the most central ward, so can provide geographical diversity.
2. Beeston and Holbeck	Chosen due to proximity to the city centre and high levels of deprivation. Will also be able to provide a direct comparison to the journeys completed in the pilot.
3. Morley North	This ward is particularly rural and has a high older population. Morley LCP also voiced interest in the service, as their population health data cites transport as a priority.
4. Morley South	This ward is particularly rural and has varied levels of deprivation. Morley LCP also voiced interest in the service, as their population health data cites transport as a priority.
5. Middleton Park	High priority due to high levels of deprivation and poor health. Also borders Beeston and Holbeck.
6. Ardsley and Robin Hood	Rural location and subsequent barriers to transport. Also boundary with Middleton Park and Morley South.

