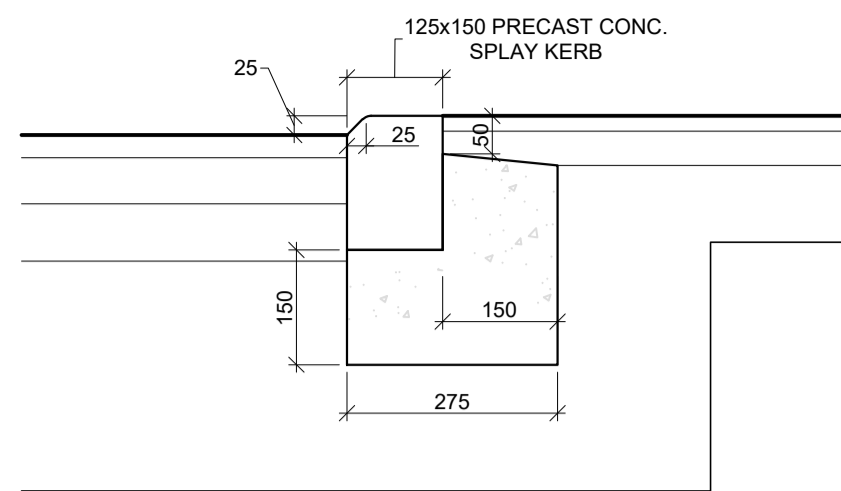
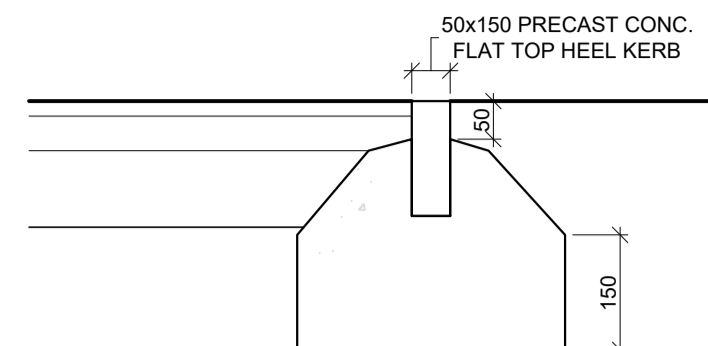


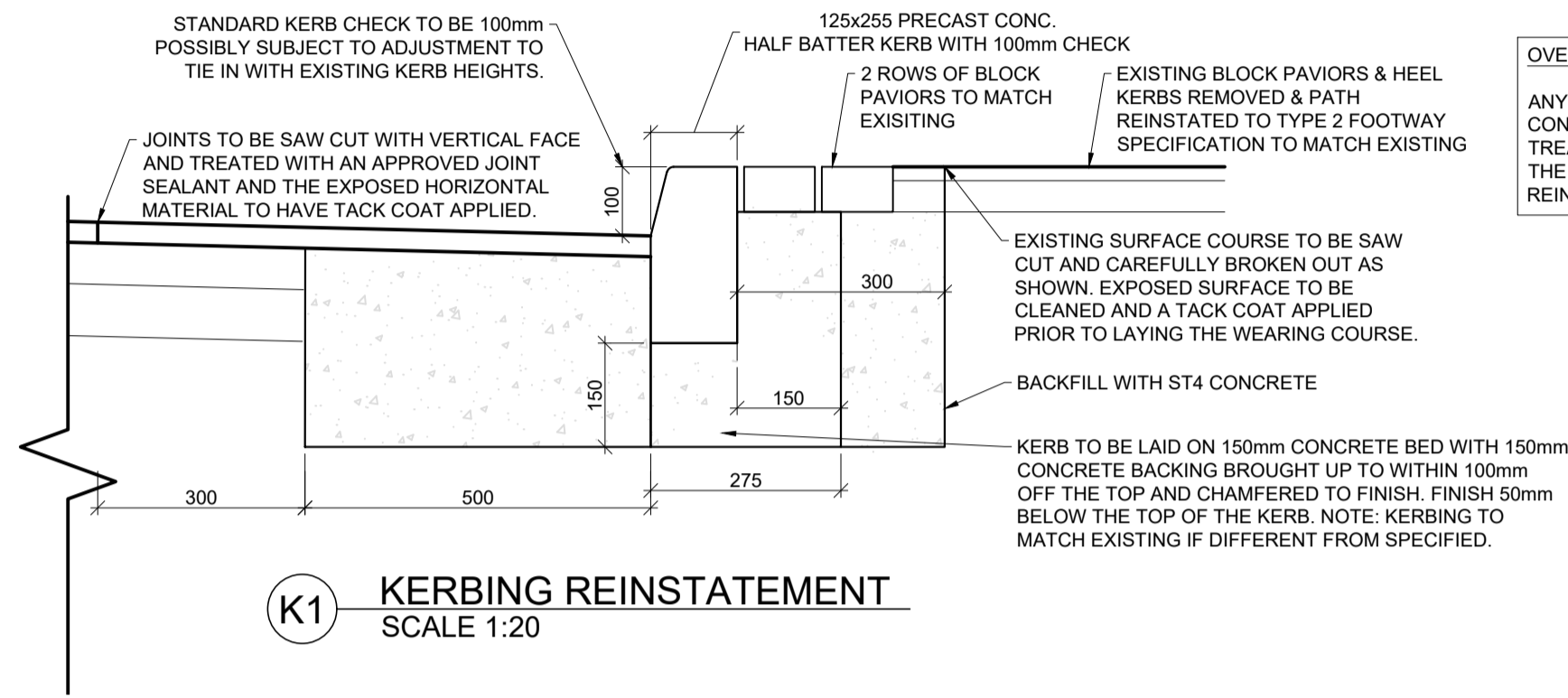
K1 HALF BATTER KERB
SCALE 1:20



K4 DROPPED KERB
VEHICULAR FOOTWAY CROSSING
SCALE 1:20

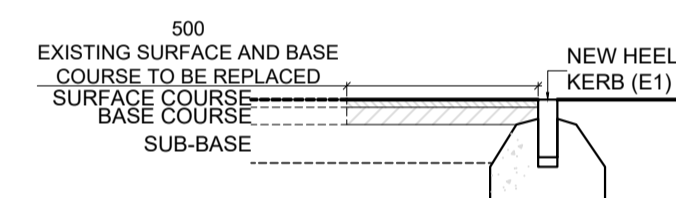


E1 FLAT TOP HEEL KERB
SCALE 1:20

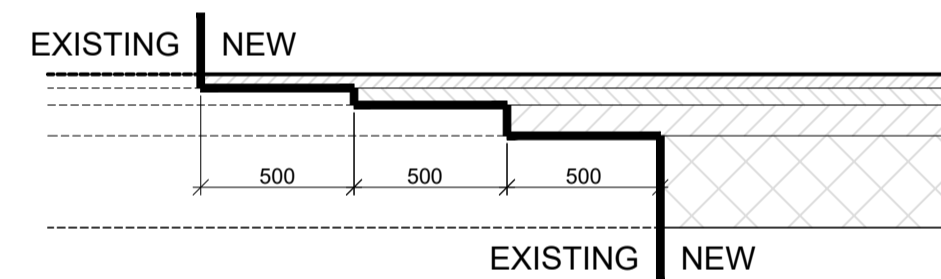


K1 KERBING REINSTATEMENT
SCALE 1:20

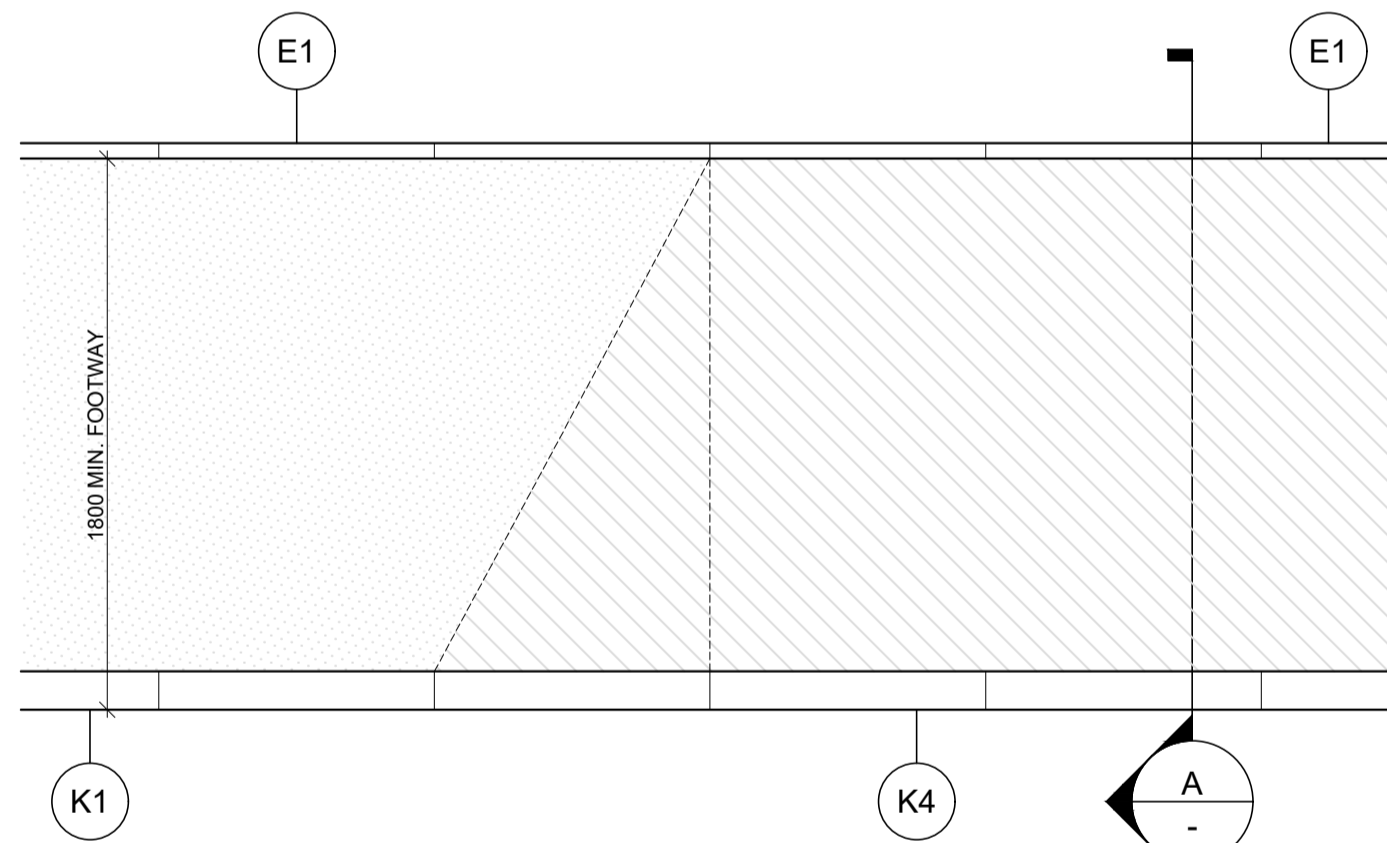
OVERBREAK IN CARRIAGEWAY
ANY OVERBREAK SHOULD BE MADE GOOD IN CONCRETE. THE EXPOSED SURFACE TO BE TREATED WITH A BITUMEN TACK COAT BEFORE THE NEW SURFACE IS LAID. THE SURFACE REINSTATEMENT IS TO MATCH THE EXISTING.



2 HEEL KERB REINSTATEMENT
SCALE 1:20



3 EXISTING/NEW TIE-IN DETAIL
SCALE 1:25



5 VEHICULAR FOOTWAY CROSSING
SCALE 1:25

CARRIAGEWAY SPECIFICATION

TYPE 1 - LOCAL RESIDENTIAL ACCESS

SURFACE COURSE	50mm	14mm HOT ROLLED ASPHALT CONCRETE
BINDER COURSE	60mm	20mm DENSE ASPHALT CONCRETE BINDER, NO LIMESTONE AGGREGATE
ROAD BASE	100mm	20mm DENSE ASPHALT CONCRETE
SUB-BASE	300mm	MINIMUM TYPE 1 TO SECTION 38 AGREEMENT, SUBJECT TO CBR RESULTS. (SEE NOTES 2&3)

TYPE 2 - LOCAL RESIDENTIAL ACCESS

SURFACE COURSE	40mm	10mm CLOSE GRADED ASPHALT CONCRETE
BINDER COURSE	60mm	20mm DENSE ASPHALT CONCRETE, NO LIMESTONE AGGREGATE
ROAD BASE	80mm	20mm DENSE ASPHALT CONCRETE
SUB-BASE	300mm	MINIMUM GRANULAR TYPE 1 TO SECTION 38 AGREEMENT SPECIFICATION, SUBJECT TO CBR RESULTS (SEE NOTES 2&3)

TYPE 2 (LOCAL RESIDENTIAL ACCESS) FOOTWAY

SURFACE COURSE	20mm	6mm DENSE ASPHALT CONCRETE
BINDER COURSE	45mm	20mm DENSE ASPHALT CONCRETE
SUB-BASE	100mm	TYPE 1 SUB-BASE

TYPE 2 (LOCAL RESIDENTIAL ACCESS) VEHICULAR CROSSING

SURFACE COURSE	20mm	6mm DENSE ASPHALT CONCRETE
BINDER COURSE	60mm	20mm DENSE ASPHALT CONCRETE
SUB-BASE	150mm	TYPE 1
	300mm	TYPE 1 (WHERE CROSSING TO SERVE MORE THAN ONE DWELLING) OR FOR EXTENDED LENGTHS OF DROPPED KERBS LIKELY TO BE OVERRUN BY VEHICLES.

TYPE 3 (PARKINGS BAYS / BLOCK PAVED RAISED TABLE / SHARED SURFACE)

SURFACE COURSE	80mm	CONCRETE BLOCK PAVOR LAID TO A 45° HERRINGBONE PATTERN IN DIRECTION OF TRAVEL. (COLOUR TO ARCHITECT SPEC)
BINDER COURSE	50mm	NATURALLY OCCURRING SAND TO COMPLY WITH BS6717 PART 3
ROAD BASE	145mm	DENSE ASPHALT CONCRETE
SUB-BASE	300mm	MINIMUM TYPE 1 TO SECTION 38 AGREEMENT SPECIFICATION, SUBJECT TO CBR RESULTS (SEE NOTES 2&3)

TYPE 3 BLOCK PAVED MARGIN

SURFACE COURSE	80mm	CONCRETE BLOCK PAVOR (COLOUR TO ARCHITECT SPEC)
BINDER COURSE	50mm	SAND AND CEMENT
BASE COURSE	150mm	ST4 CONCRETE
SUB-BASE	300mm	MINIMUM TYPE 1 TO SECTION 38 AGREEMENT SPECIFICATION, SUBJECT TO CBR RESULTS. (SEE NOTES 2&3)

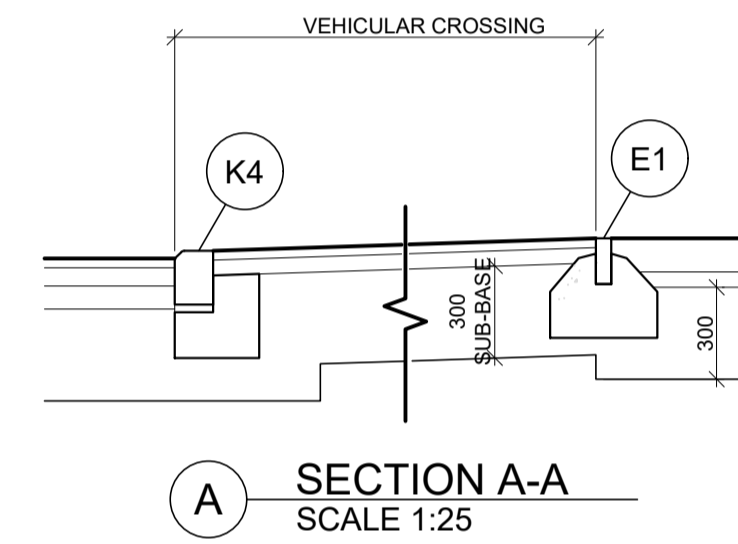
NOTES

- REFER TO DRAWING P14743-522 FOR KERBING PLAN DETAILS
- CLAUSE NUMBERS REFER TO SPECIFICATION FOR HIGHWAY WORKS.
- SUB-BASE DEPTH ASSUMES A CBR VALUE OF 3%. ACTUAL FOUNDATION DEPTH TO BE CONFIRMED BY CBR TESTS CARRIED OUT ON SITE AT 25m MINIMUM CENTRES (TBC WITH LEEDS CITY COUNCIL GEO TECHNICAL DEPARTMENT). CBR RESULTS SHALL BE SUBMITTED TO LEEDS CITY COUNCIL GEOTECHNICAL SECTION.
- NO CARRIAGEWAY CONSTRUCTION SHALL BE CONSTRUCTED ON NON ENGINEERED MADEGROUND. ANY REMNANT OF MADE GROUND SHALL BE REPLACED IN ACCORDANCE WITH SPECIFICATION FOR HIGHWAY WORKS SERIES 600

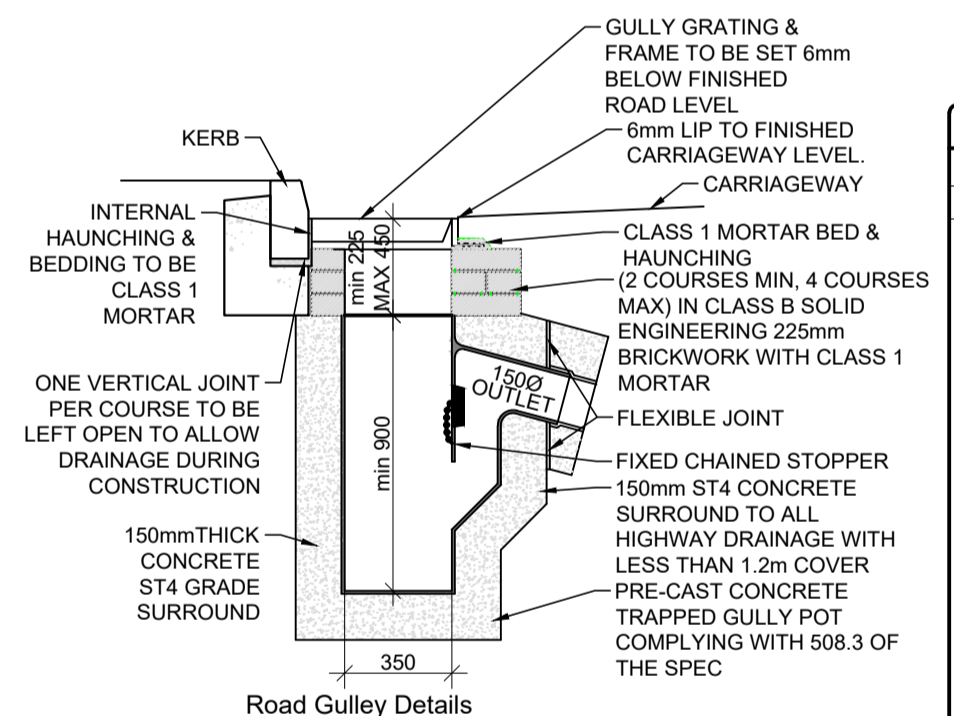
KERBING NOTES

- PRECAST CONCRETE WILL COMPLY WITH CLAUSE 1101 OF THE SPECIFICATION FOR HIGHWAY WORKS.
- GRADE ST4 CONCRETE SHALL BE USED IN THE KERB FOUNDATION AND BACKING UNLESS OTHER SPECIFIED. BED & BACKING TO ALL KERBING TO BE MONOLITHIC. BACKING TO KERBS TO BE LAID SAME DAY AS CONCRETE KERB RACE.
- WHERE A CONCRETE KERB OR CHANNEL ABUTS A ROLLED ASPHALT SURFACE COURSE IT SHALL BE PAINTED WITH A 200 PEN BITUMEN TACK COAT
- WHERE BLOCKS OR FLAGS BEDDED ON SAND ABOUT THE KERB, THE TOP FACE OF THE HAUNCH SHALL BE HORIZONTAL AND FINISH BELOW THE SAND LAYER

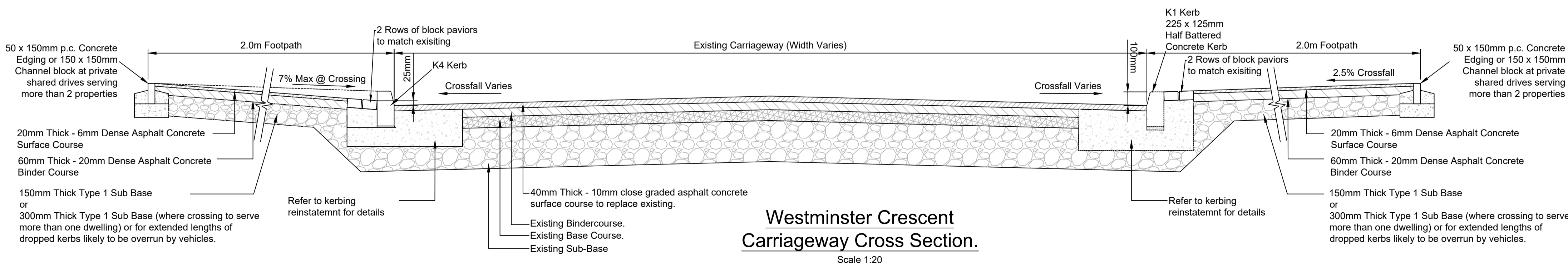
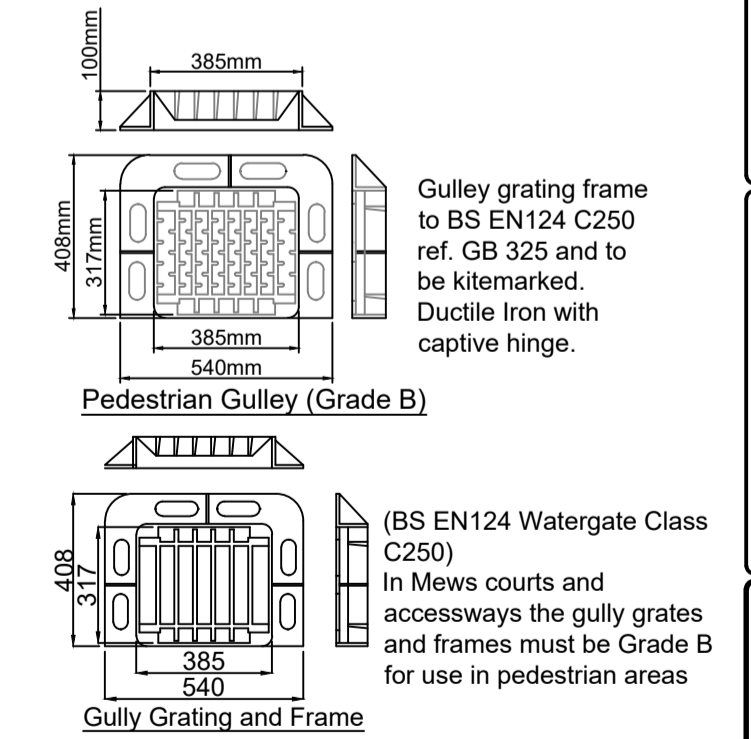
PAVEMENT FOUNDATION			
CBR%	CAPPING	SUB-BASE	SUB-BASE
<2	600	+	150
2	450	+	150
3	350	+	150
4	300	+	150
5-15	250	+	150
15>	-	-	150



A SECTION A-A
SCALE 1:25



Gully gratings and frames shall comply with the requirements of BS EN124 and be fitted with an anti theft device. Road junction gullies to be placed at tangent points to prevent water spilling from one carriageway to the other.



Westminster Crescent
Carriageway Cross Section.
Scale 1:20

REV.	DATE	REVISION	BY	CHK.
-	-	FIRST ISSUE	PH	NB
-	-	-	-	-

Leeds Federated Housing Association

Proposed Residential Development at Westminster Crescent, Halton Leeds (Phase 2)

Section 278 Highway Construction Details

Goodson Associates
Tel: +44 (0)113 369 7925
Fax: -
Email: leeds@goodsons.com
Web: www.goodsons.com

Consulting Civil, Structural & Transportation Engineers
Fountain House, 4 South Parade,
Leeds, LS1 5QX
Also at Aberdeen, Edinburgh and Glasgow.

TENDER			
DATE CREATED:	Aug2021	SCALE:	As Stated @ A1
CONTRACT No:	P14743	DRAWING No:	521
		REV:	-