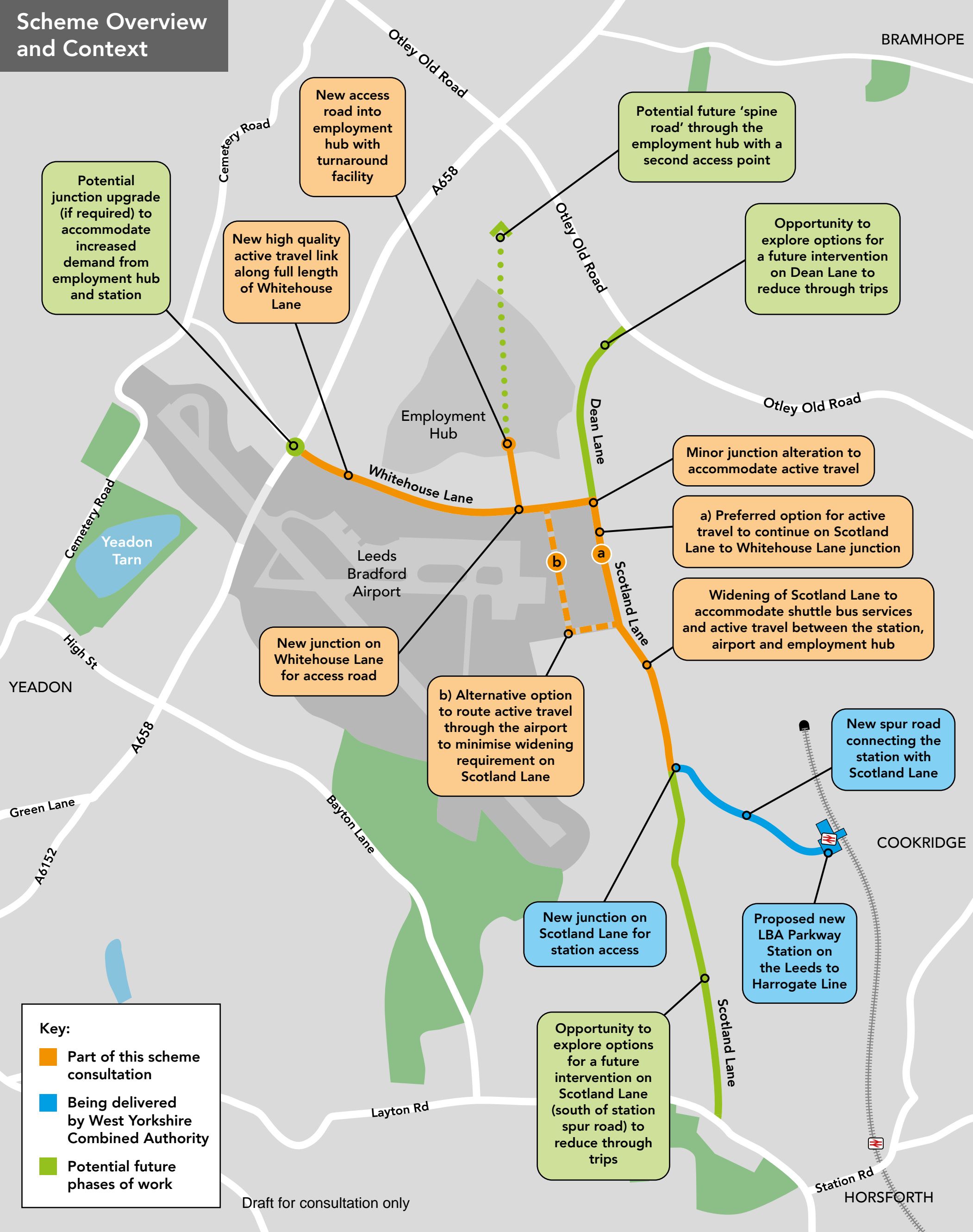


Scheme Overview and Context



Potential junction upgrade (if required) to accommodate increased demand from employment hub and station

New high quality active travel link along full length of Whitehouse Lane

New access road into employment hub with turnaround facility

Potential future 'spine road' through the employment hub with a second access point

Opportunity to explore options for a future intervention on Dean Lane to reduce through trips

Minor junction alteration to accommodate active travel

a) Preferred option for active travel to continue on Scotland Lane to Whitehouse Lane junction

Widening of Scotland Lane to accommodate shuttle bus services and active travel between the station, airport and employment hub

New junction on Whitehouse Lane for access road

b) Alternative option to route active travel through the airport to minimise widening requirement on Scotland Lane

New spur road connecting the station with Scotland Lane

New junction on Scotland Lane for station access

Proposed new LBA Parkway Station on the Leeds to Harrogate Line

Opportunity to explore options for a future intervention on Scotland Lane (south of station spur road) to reduce through trips

Key:

- Part of this scheme consultation
- Being delivered by West Yorkshire Combined Authority
- Potential future phases of work