

# Leeds Streets for All

## OW Community Committee

- Pudsey
- Farnley & Wortley
- Calverley & Farsley



# Public Response Report and Local Area Transport Plans

- There has been significant transformational work in recent years which has mainly focused on the City Centre and key transport corridors. We now want to target improvements in local our neighbourhoods and create **Local Area Transport Plans**.
- Our online [Leeds Streets for All](#) survey, has helped people record what type of improvements they want to see and where in their local areas.
- Over 3,500 people visited the consultation website, and 259 respondents left over 799 contributions. A total of 1,164 relevant comments were analysed in this report.

VEHICLES  
& PARKING



WALKING  
& WHEELING



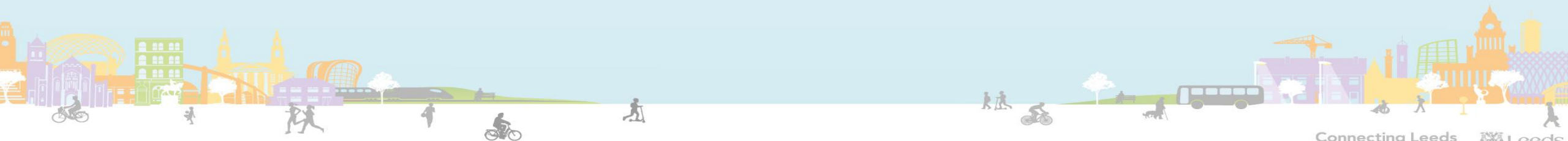
CYCLING



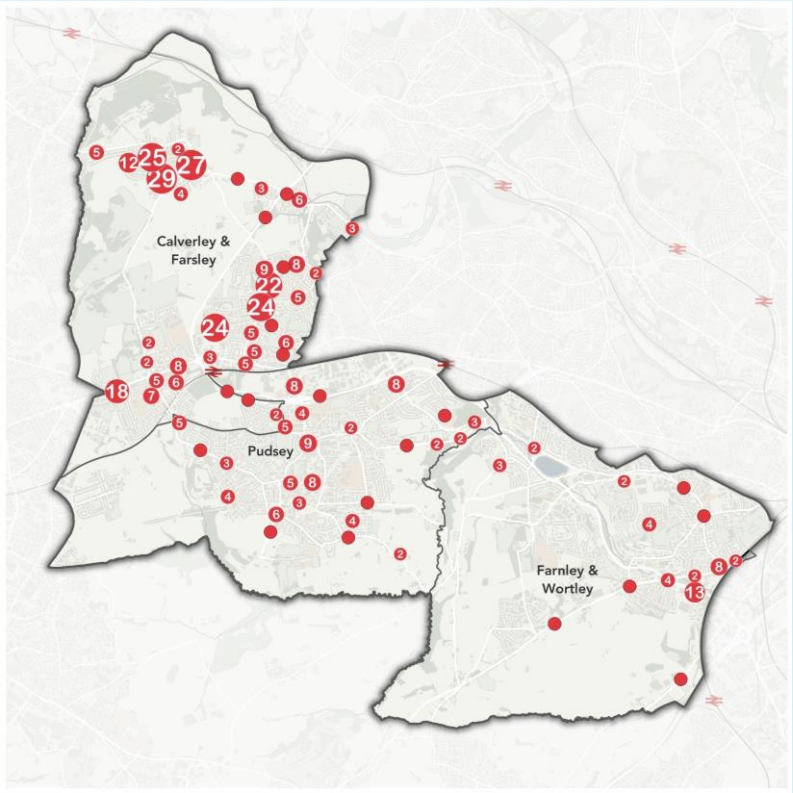
BUS STOPS &  
RAIL STATIONS



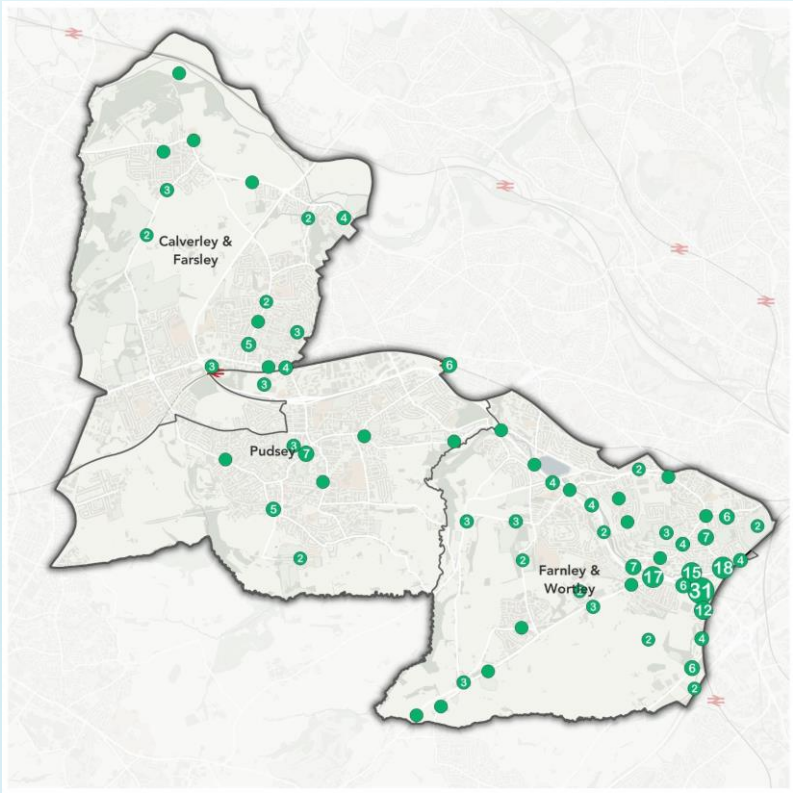
STREET  
ENVIRONMENT



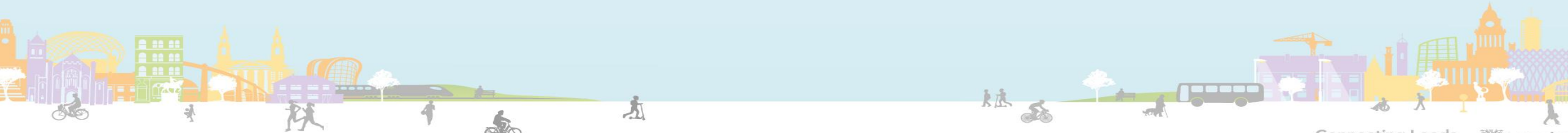
# Examples of where people have commented.....



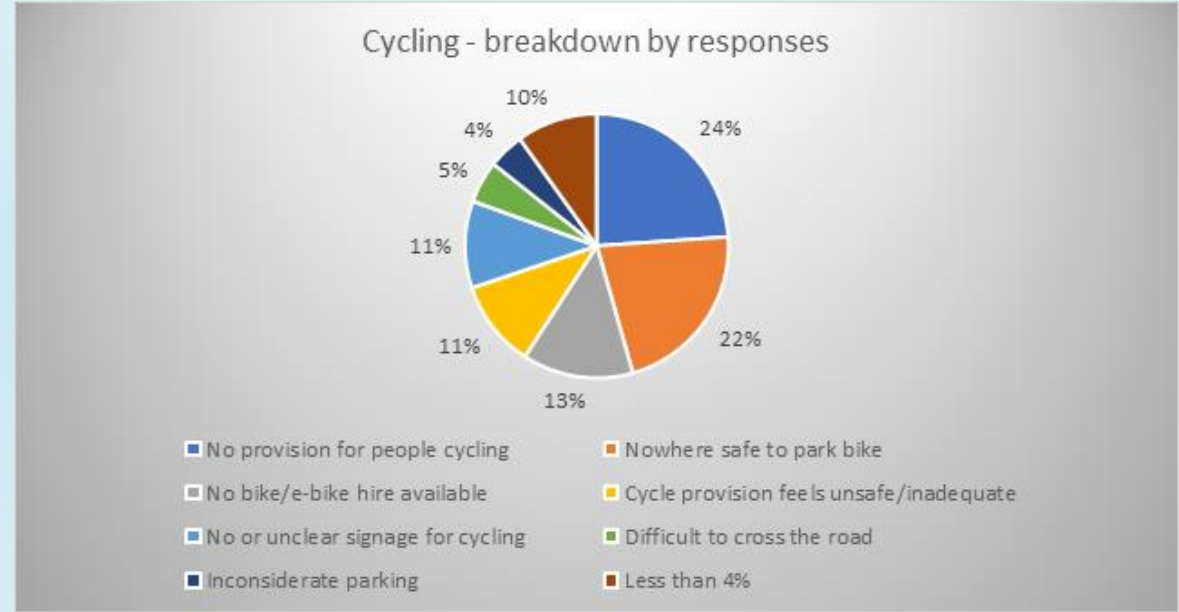
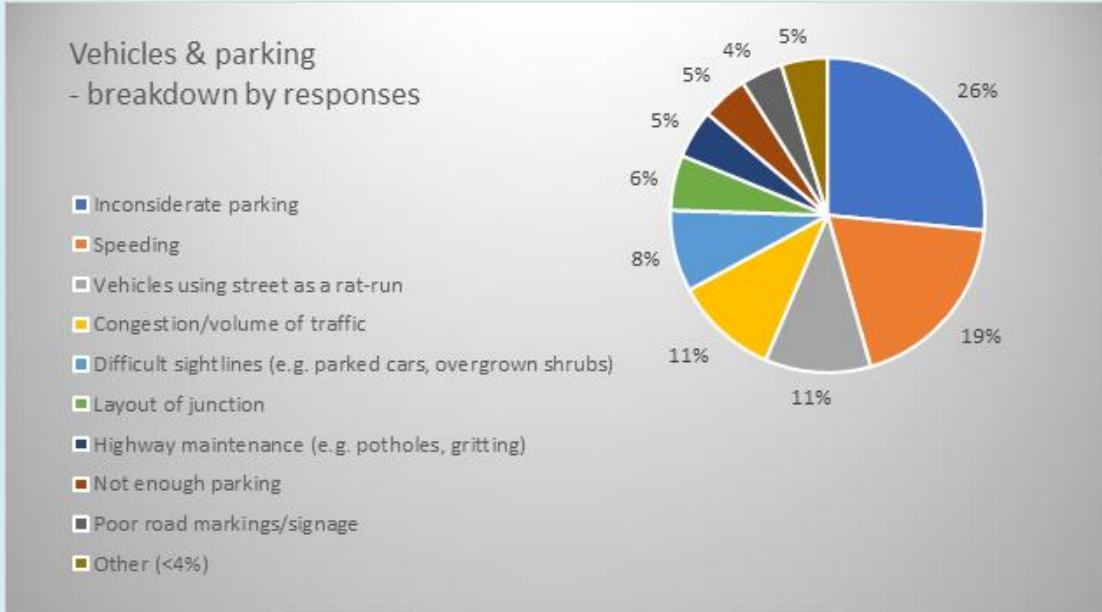
**Vehicles and Parking**



**Cycling**

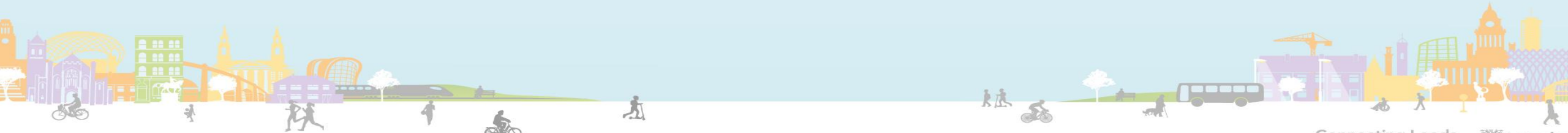


# Examples of what people commented on.....



## Vehicles and Parking

## Cycling









# What we are already doing in your area.....

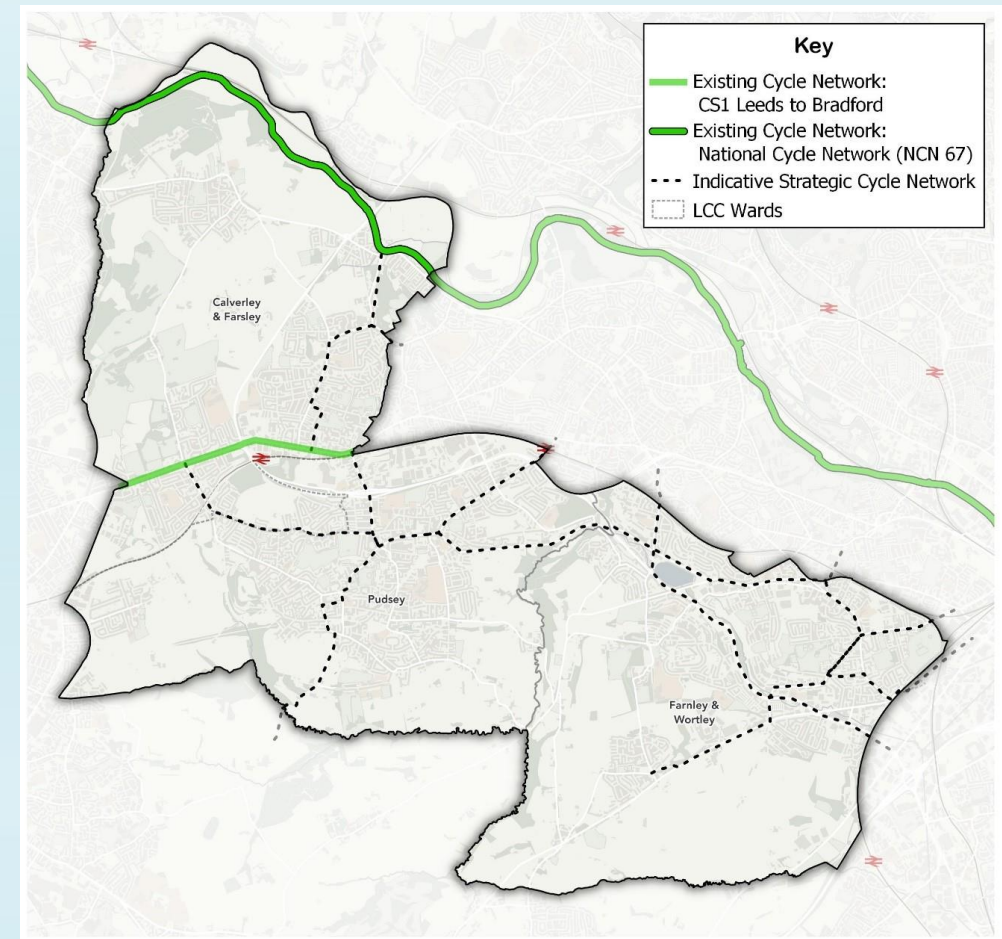
## Major Schemes

- Horsforth to Rodley Cycle Link (CWL)
- Dawsons Corner and Stanningley Bypass
- Average speed cameras on the A6120 Ring Road

## Annual programme of works

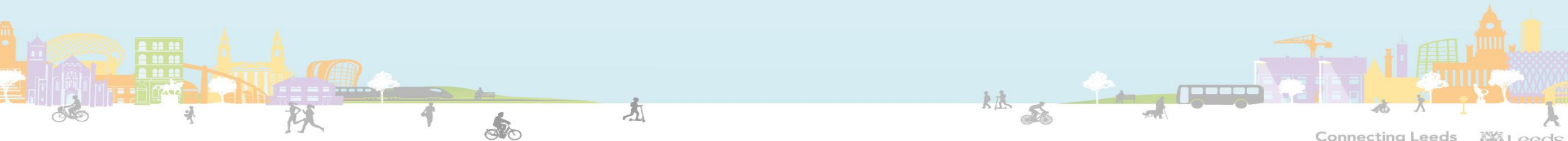
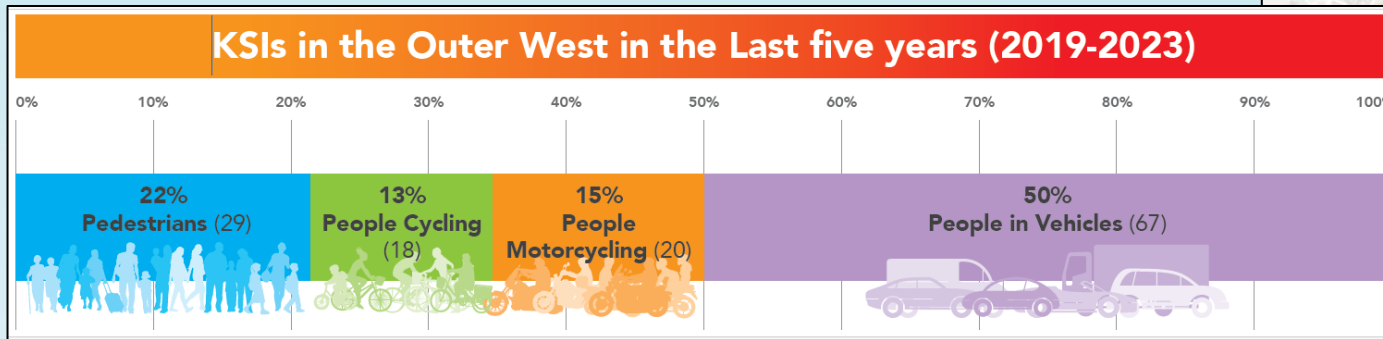
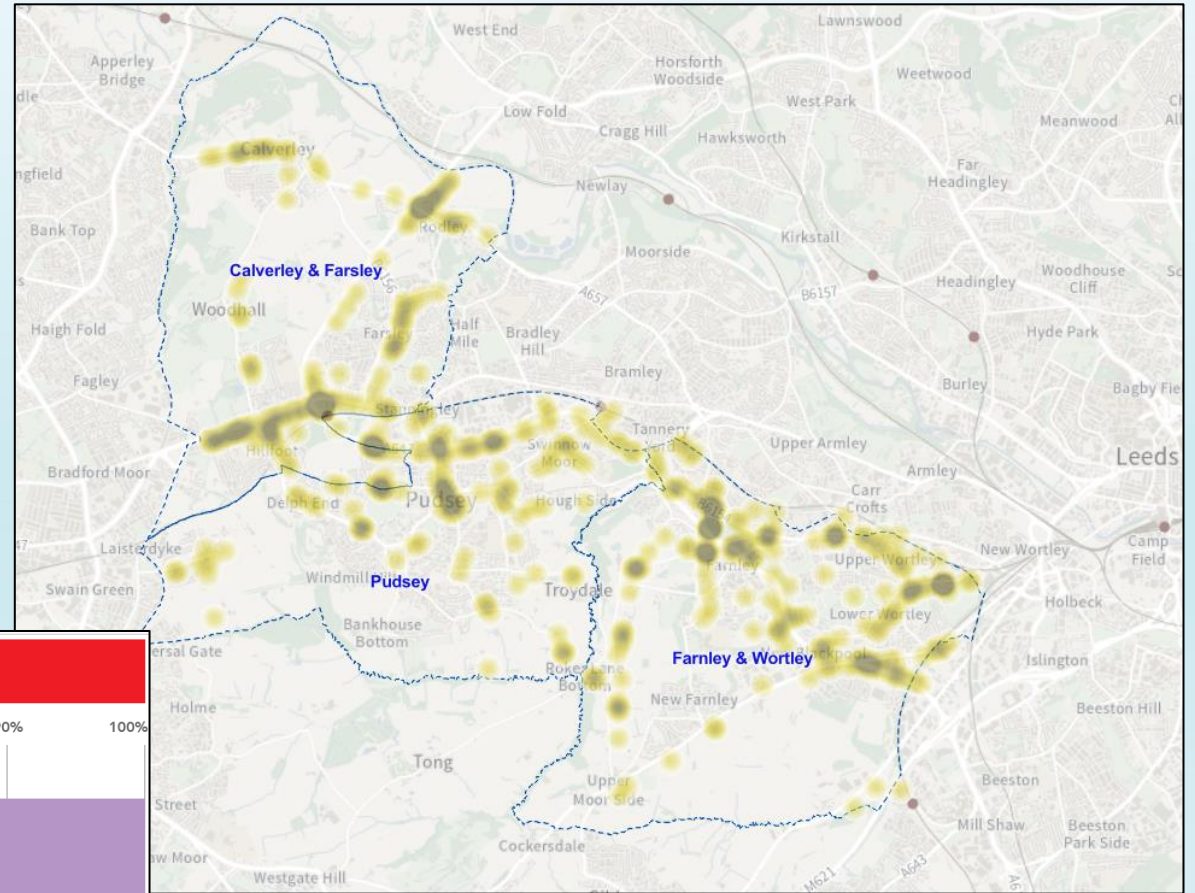
Locality	Street Name	Ward	Works Category	Works Description	Theme
Pudsey / Farsley	Dawsons Corner roundabout	Calverley & Farsley, and Pudsey	Major Carriageway Improvements	Realignment and widening of roundabout	
Calverley	Rodley Ln, junction with Brookfield Avenue	Calverley & Farsley	Pedestrian Crossing	Construction of pedestrian crossing with central island	
Farsley	Old Road	Calverley & Farsley	Footway works	Footway improvements	
Pudsey	Kent Road	Pudsey	Pedestrian crossing	New zebra crossing outside Lowtown Primary School	

## Potential new local cycle and walking routes



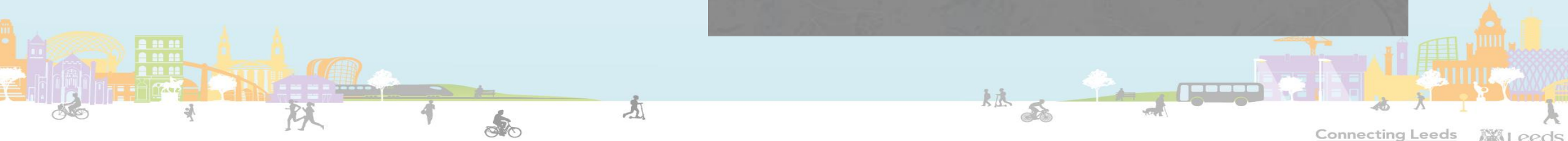
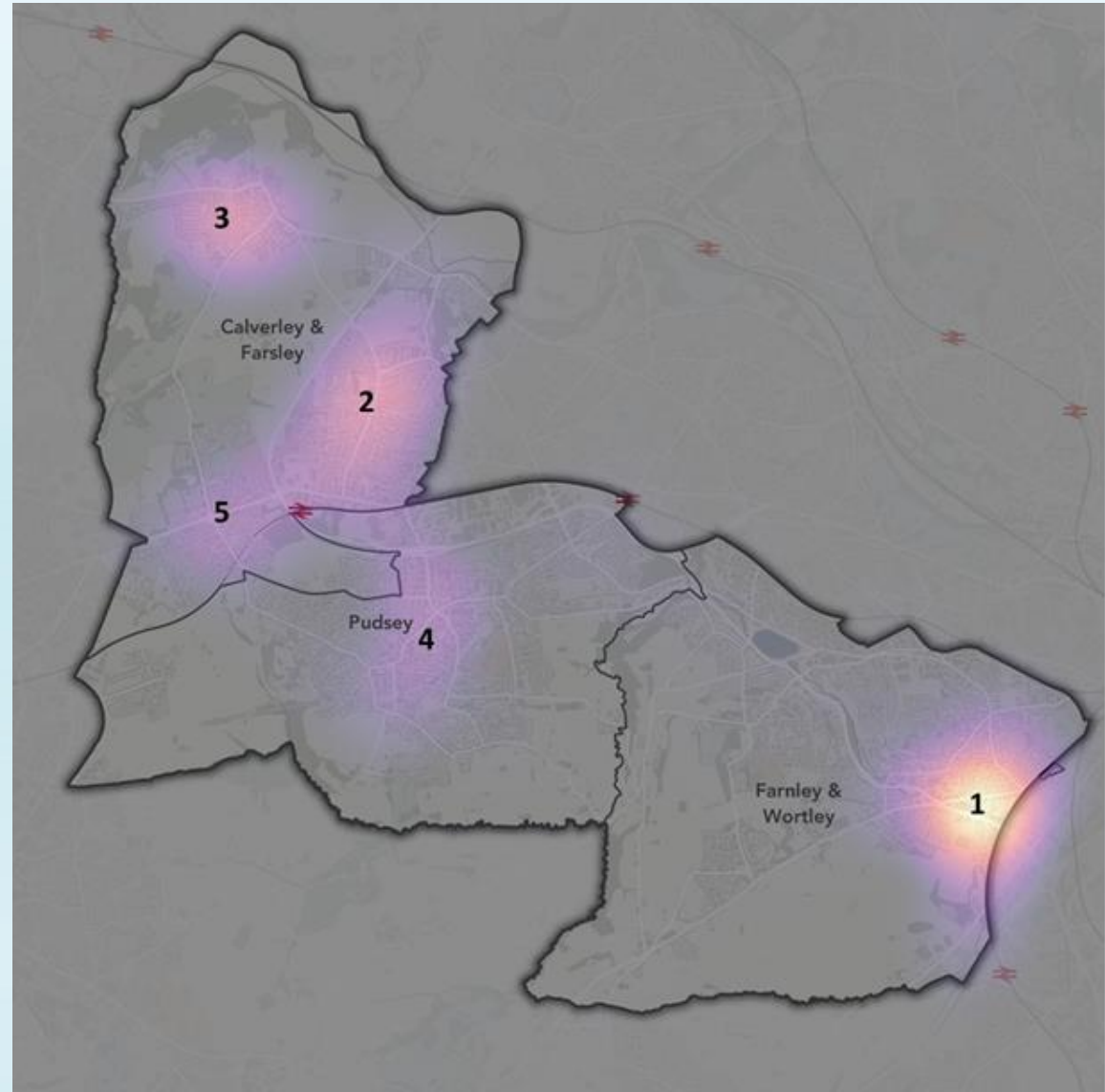
# Road Safety and Collisions analysis.....

- Road Collision Data (KSIs)
- Site and lengths of concern / Cluster analysis



# Heatmap created using the survey data provided collect via the 'Streets for All' consultation

The concentrated coloured areas show the locations that have received the most comments





# Our Data Analytics Team developed a mapping tool to help analyse the survey data.....

Streets for All

Select a Committee Area(s)

All Inner East Inner North East Inner North West Inner South Inner West Outer East Outer North East Outer North West Outer South Outer West

Select a Theme

All

Accessible Survey - Bus stops and rail

Accessible survey - Vehicles and parki

Bus and Rail Cycling Street

Vehicles Walking

Number of 'Agreements'

All 0 1 2 3 4 5

6 7 9

Select an Issue

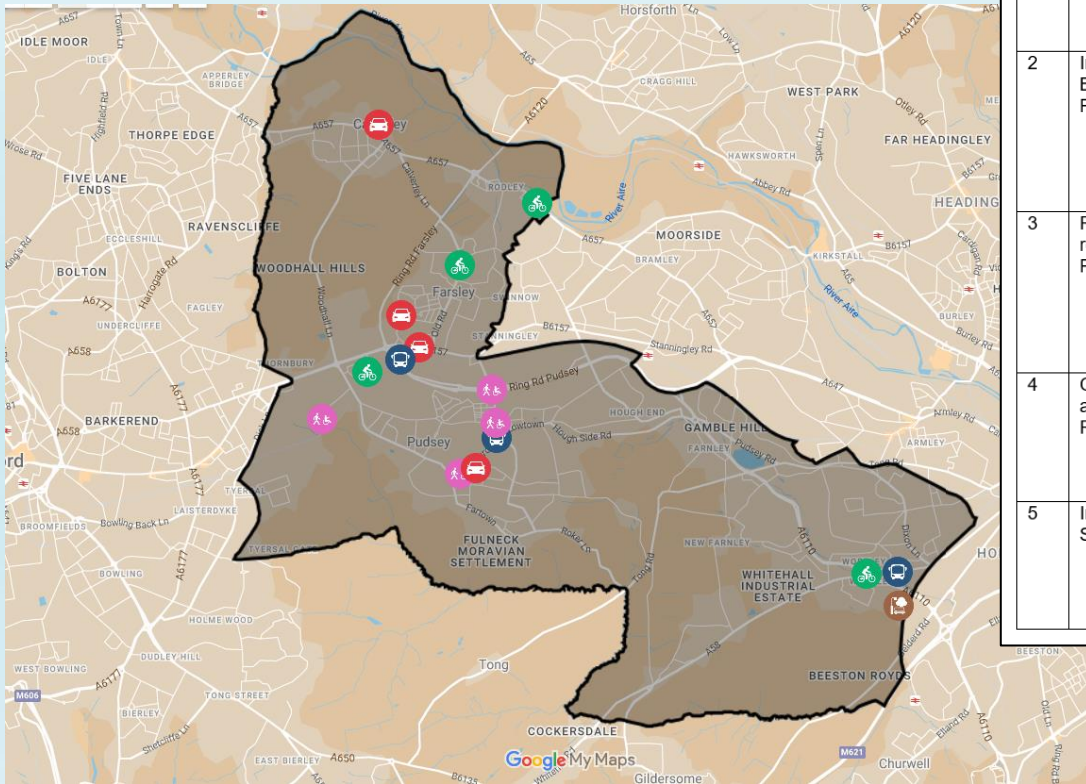
- Anti-social behaviour
- Brooklyn street Armley
- Bus availability
- Bus shelter too small
- Bus stop feels unsafe (e.g. close to cycle path/road)
- Bus stop feels unsafe (e.g. close to cycle path/road)
- Buses are late
- Congestion/volume of traffic

Info Map Bar: Issues Bar: Issues by Area Pie: Themes Pie: Issues Group Bar: Respondent by Age/Area Collisions

Powered by Esri



# The Local Plan (draft)



Example of results maps

Ref	Proposed intervention	Type of intervention	Location	Alignment with Connecting Leeds Transport Strategy	Theme
1	Look to improve crossing facilities both new facilities and potential to make existing facilities more responsive. Creating a better whole route to school environment.	Whole route to school improvement	Chapelton between Greenside and Carlisle Road	<ul style="list-style-type: none"> <li>- Healthier Streets approach</li> <li>- Improved pedestrian access and safety</li> </ul>	<p>WALKING &amp; WHEELING </p> <p>CYCLING </p>
2	Investigate possibility of providing more Blue Badge parking near destinations like Pudsey Park	Parking Management	Church Lane/Ratcliffe Lane	<ul style="list-style-type: none"> <li>- Inclusive and accessible to everyone.</li> </ul>	<p>VEHICLES &amp; PARKING </p> <p>WALKING &amp; WHEELING </p>
3	Review pedestrian crossing responsiveness around the centre of Pudsey near the bus station.	Walking and cycling and public transport access improvements.	Marketplace / the bus station	<ul style="list-style-type: none"> <li>- Healthier Streets approach</li> <li>- Improved pedestrian access and safety</li> </ul>	<p>BUS STOPS &amp; RAIL STATIONS </p> <p>WALKING &amp; WHEELING </p>
4	Opportunities for improved pedestrian accessibility in the vicinity of the Cemetery Road and Mount Pleasant junctions.	Safer walking routes	Richardshaw Lane	<ul style="list-style-type: none"> <li>- Safer Roads</li> <li>- Inclusive and accessible to everyone.</li> <li>- Healthier Streets Approach</li> </ul>	<p>WALKING &amp; WHEELING </p>
5	Improve crossing facilities over Stanningley Bypass	Safer walking routes	Stanningley Bypass /Richardshaw Lane	<ul style="list-style-type: none"> <li>- Safer Roads</li> <li>- Inclusive and accessible to everyone.</li> <li>- Healthier Streets Approach</li> </ul>	<p>WALKING &amp; WHEELING </p>

Small sample of some of the potential interventions

