

Report of the Director of Environment and Neighbourhoods

Report to North West (Inner) Area Committee

Date: 27th October 2011

Subject: Annual Community Safety Report

Are specific electoral Wards affected?	<input checked="" type="checkbox"/> Yes	<input type="checkbox"/> No
If relevant, name(s) of Ward(s): Headingley, Hyde Park & Woodhouse, Kirkstall, Weetwood		
Are there implications for equality and diversity and cohesion and integration?	<input type="checkbox"/> Yes	<input checked="" type="checkbox"/> No
Is the decision eligible for Call-In?	<input type="checkbox"/> Yes	<input checked="" type="checkbox"/> No
Does the report contain confidential or exempt information?	<input type="checkbox"/> Yes	<input checked="" type="checkbox"/> No
If relevant, Access to Information Procedure Rule number:		
Appendix number:		

Summary of main issues

1. This report provides crime statistics for Inner North West Leeds and details of key activity to address crime and anti social behaviour issues.

Recommendations

2. The Area Committee is asked to:
 - note the report and offer comments

1 Purpose of this report

- 1.1 This report is the annual community safety report, providing Members with details of the community safety activity undertaken during the last 12 months. The report will also provide details of crime data, making comparisons with the previous year.

2 Background information

- 2.1 A number of factors have a bearing on crime, criminologists have placed these factors into three broad categories:

- A suitable target or opportunity, for example: valuable items which can be removed relatively easily such as laptops near an open window, vehicles with unlocked doors and a valuable item on show, etc
- A motivated offender, for example: someone whose values or beliefs make stealing acceptable, drug dependency, someone motivated by greed, etc
- A low likelihood of getting caught, for example: no Police or security guards, a neighbourhood with a low level of reporting crime, no natural street surveillance, etc

- 2.2 Traditional problem solving techniques aim to reduce crime by impacting on these three categories:

- Working to educate the victim (leaflet drops, face to face crime prevention advice, etc)
- Tackle the offender (known as offender management; visit known offenders, tenancy action, curfews, criminal sanctions – prison, etc)
- Undertake community based work to improve natural surveillance such as community engagement and capacity building to increase reporting (eg neighbourhood watch), environmental works such as cutting hedges back, secure by design, etc)

- 2.3 However it should be acknowledged that other factors also have a bearing on crime;

- Seasons
- Weather
- Release of offenders
- Location
- Population

- 2.4 It is also important to note that one offender can commit many offences in a short period of time and this can lead to significant increases in crime figures. For example, where six cars are damaged in a street, this would lead to six reports of criminal damage.

3 Summary of key Actions

- 3.1 The North West Divisional Community Safety Partnership is a multi agency partnership chaired by the Police and West North West Homes and includes partners from Fire Service, Leeds University, Youth Service, Youth Offending Service, Safer Leeds and Community Safety Lead Member representatives from each of the four Area Committees in West North West. The Partnership meets four times a year and sets the strategic direction for partnership work, examining performance and agreeing priorities. The work of the group is accountable to the Safer Leeds executive, who receives regular reports of the activity undertaken.
- 3.2 The key actions highlighted in this report have been delivered through the Divisional Community Safety Partnership during the last 12 months.
- 3.3 Multi Agency Tasking. This group meets monthly and it's membership includes; Safer Leeds (Co-chair), Police (Co-chair), Area Management, West North West Homes, Fire Service, Youth service, Attendance Management, Environmental Action Team, both Universities and Leeds ASB Team. The group aims to direct partnership resources to tackle the priorities set by the Divisional Partnership and from local agency intelligence.

Examples of the work undertaken by the Multi Agency Tasking group during the period September 2010 – August 2011 includes:

- Planning and delivering 4 Operation Champions and 4 action days to tackle specific problems
 - Tackling anti social behaviour problems at Haddon Public House with late parties, nuisance fires in the Autumns in Hyde Park, rowdy behaviour on Queens Road, Ivesons / Tinshills, Speeding taxis on Beckett Campus to name a few.
 - training of Council staff on spotting cannabis farms
 - planning and contributing to 12 months of community engagements events held across Inner North West. Partners used these events to engage with residents about crime, grime and anti social behaviour priorities and work being undertaken in communities.
- 3.4 Operation Champion. This is a multi agency operation aimed at tackling crime, anti social behaviour and environmental issues within an agreed area. A number of agencies come together to focus their activity in a geographical area, joining together to have a greater impact. During the last 12 months, 4 Operation Champions have been held in the Inner area focusing on Hyde Park, Burley, Hawksworth Wood and Woodhouse. The combined results for the year include:
- Over 500 ASB leaflets distributed
 - Over 64 vehicles stopped 26 fixed penalty notices issued and 6 vehicles seized, 2 DVLA tickets issued
 - 63 ASB complainant visits
 - Over 500 tenancy visits by West North West Homes
 - Over 500 leaflets promoting home fire safety checks from Fire Service and over 100 smoke detectors installed

- 5 locations cleared of rubbish
- 12 locations cleared of graffiti
- 7 arrests

- 3.5 A further 4 Operation Champions are scheduled during the next 12 months. These operations will be supplemented by action days as required. During this period action days were held in Hyde Park & Woodhouse, Tinshill, Holborns and Little London. Action days are usually focused to tackle specific problems such as youth nuisance, litter, graffiti or criminal damage.
- 3.6 Off Road Bikes. The cost of this project is shared across the four Area Committee areas, with each Area Committee contributing £1,500 per annum towards the running costs of two vehicles. The Bikes are deployed across the Division to patrol greenspaces or to target specific problems. The vehicles are effecting in reducing anti social behaviour and low level crime, particularly on green spaces providing reassurance to those using parks and greenspaces. The vehicles have also been used during specific initiatives such as Operation Champion or more focused initiatives in conjunction with the council's Park Ranger Service. A dedicated (answer phone) telephone number has been set up for the service (0113 2395092) to deal with calls about nuisance bikes and this number is publicised in community newsletters and the Police Neighbourhood Policing Team Website.
- 3.7 Cumberland Road. Residents living on Cumberland Road, North Hill Road and North Grange Road have been working with Councillors and agencies to reduce asb in the area, particularly noise nuisance from parties and revellers coming into or leaving the area. Intense work has been undertaken by the University to address problems relating to students including extra patrols in student residences, improvements to the security system in halls of residences, encouraging residents to use the Neighbourhood Helpline and referring students for disciplinary action, where appropriate. Residents agreed to work with Officers and Councillors to develop proposals for a "quiet zone" to be created in Cumberland Road, North Hill Road and North Grange Road. The scheme would be voluntary but signage would help people coming into the area to be aware that they should keep noise down whilst coming into or leaving the area. The signage for the area went up on 18th September 2010 and was paid for by the Area Committee and Leeds University. A follow up meeting with residents is planned for October 2011 to assess the impact of the work undertaken.
- 3.8 Capture Technology. This project uses high tech equipment to track and trace stolen property. The project includes capture cars where sat navs are left on display, houses set up to look like they are occupied with a laptop on display, or bicycles; the items in question contain tracking equipment or software which is used to track where stolen items are taken. The project has had successful outcomes, leading to offenders pleading guilty earlier because of the weight of evidence against them. Valuable evidence is also gained about where stolen goods are taken and the action taken against those receiving and handling stolen goods. During the last 18 months the Project has lead to the arrest of 25 individuals and the most notable success being the sentencing of a burglary nominal to 876 days in prison. The team is currently in the process of purchasing 2 sets of covert cameras to be deployed in asb hotspots to

capture information about those involved in anti social behaviour such as arson, graffiti, rubbish dumping, etc

3.9 CCTV. The Area Committee funds the permanent citing of two CCTV cameras in Hyde Park (Headingley ward). The cameras are monitored by LeedsWatch based within Safer Leeds. There are additional cameras in Hawksworth Wood, Headingley Town Centre and Hyde Park Corner. CCTV footage has been used in relation to 190 arrests within the North West Leeds, for a variety of offences including burglary, robbery, theft, criminal damage, sexual assault, outraging public decency, offensive weapons, drug offences and public disorder.

3.10 Operation Walksafe. This is a joint operation between the Police and the Universities security staff and targets patrols to burglary and robbery hotspots. The Operation is about sharing intelligence to maximise impact by not duplicating functions. For example Police will patrol different areas to those patrolled by security staff. A joint briefing is held before each patrol and Intelligence about where crimes have been committed will feed into the patrols for the next day. The Operation runs in September each year and is planned in conjunction with the Universities.

3.11 Woodhouse Burglary Reduction Plan. In August 2010, analysis of crime data showed a high number of burglary offences in a relative small geographical area in Woodhouse Carr. This analysis showed 108 offences for the 950 properties in the area. Multi agency work commenced to tackle this issue and impact on the burglary offences. The plan came to an end in July 2011 and resulted in a significant reduction in burglary in the area, with a reduction down 77 in October 2010 and down to 43 in July 2011. Examples of work undertaken include:

- Multi Agency environmental audit of the area looking at the environmental issues which contribute to and generate crime in the area (overgrown hedges, binyards, streetlighting, etc)
- Door knock of all residents', offering property marking of valuable portable items (laptops, mobiles, games consoles, etc), providing crime prevention advice and encouraging residents to attend the local PACT meetings (partners and community together) to report issues and receive updates
- Four student volunteer door knock initiatives over 12 months to provide peer to peer crime prevention advice
- Working with Youth Services to engage with young people in the area and develop provision in conjunction with young people to deter them from crime. This included two 12 week Revizit programmes aimed at engaging young people at risk of offending. The programme included looking at citizenship and the impact of behaviour in the community
- Writing to all landlords in the area offering free security assessments through CASAC and reduced rates for any target hardening work undertaken
- Community Payback clearing rubbish on Woodhouse Ridge and surrounding streets
- Two days of action delivered in the area including; visiting victims of crime, marking property, clearing rubbish and engaging with residents in the area

3.12 Community Payback. In August 2011, Safer Leeds drew up a contract to work with Community Payback to clear binyards in Woodhouse. The project was part of the

burglary reduction plan for Woodhouse. The intention was to undertake the project in partnership with Refuse Service and WNW Homes, with:

- Community Payback providing the labour force
- refuse service agreeing to waive the tipping charges
- WNW Homes providing a vehicle and operational support (in completing risk assessment, providing overalls, etc)

The Project has successfully cleared the binyards in Woodhouse and is now moving onto the binyards in Hyde Park. To date 13 tonnes of rubbish has been removed from the area with all fifty binyards now clear and actively monitored to keep them clear.

3.13 Burglary Focussed Outcome Based Accountability. Safer Leeds has adopted the Outcome Based Accountability problem solving model to deliver improvements in reducing burglary. The model aims to look at the desired outcome as the starting point, examining the indicators which can be used to measure the outcome, working out what the performance is now, examining what is driving the (burglary) problem, and looking at solutions that have worked in the past to tackle problems, focusing on biggest gains for least effort. The model is delivered through multi agency stakeholder discussions and work is collected in an action plan which is updated at the Multi Agency Tasking Group meetings.

3.14 Hawksworth Wood Burglary Reduction Plan. The Outcome Based Accountability stakeholder session for Hyde Park was held in August 2011. An action plan has been produced and is managed through the Multi Agency Tasking meeting. Actions within the plan include:

- Working with Children's Services to ensure support is available to those at risk of offending due to members of the household who may be prolific offenders
- Use of new technology to assist in the property marking and recovery of stolen property
- Undertake further analysis to look at the method of entry for burglary such as insecure property, sneak ins, poor euro profile locks, breaking windows and look at developing appropriate responses to tackle the biggest problem including the introduction of targeted crime reduction messages related to the research undertaken
- Explore the possibility of introducing burglary alarms into West North West properties in the area

3.15 Hyde Park Neighbourhood Board. Members will be aware that the Hyde Park Board is overseeing improvements to the environment, crime and anti social behaviour issues identified in reports previously presented to the Committee. Local tasking arrangements set up for Hyde Park deliver specific responses to any issues identified by members of the public or from agency intelligence. A number of action days have been held in the area targeting issues such as graffiti, anti social behaviour and burglary. Further work is planned during the year under this theme and regular reports are provided to the board for information and scrutiny.

3.16 The Arson Taskforce, Part of West Yorkshire Fire & Rescue Service, has undertaken a number of projects in the area working with partners to develop work in hotspots areas and at high risk times such as mischief night and bonfire night. Examples of work undertaken in Inner North West include:

- Contributing to environmental audits to identify rubbish which should be removed before it maybe set alight
- Working with schools to highlight the danger and risk of fire, different products are delivered with different year groups in partnership, eg Fire Service and Police delivering Prison me no way which shows where the wrong path in life may lead to, working with year 9 in relation to the dangers around bonfire night
- The Possible Arson Targets (PAT) project working with building control to identify empty buildings which could be possible arson targets to make sure they are secure and clear of danger
- Strikeout Campaign which sees the Arson Taskforce, Police and Trading Standards working together to visit commercial premises and remind them of their responsibility in relation to the sale of matches and lighters to underage children, particularly around mischief night / bonfire night

4 Analysis of Crime Figures

4.1 Appendix 1 provides an overview of crime figures for all 4 wards which make up Inner North West Leeds (Headingley, Hyde Park & Woodhouse, Kirkstall and Weetwood). The figures presented cover the period April 2009 – March 2010 and April 2010 – March 2011 and relate to all crime types, including Fraud & Forgery, handling stolen goods, sexual offences and other thefts.

4.2 During this period crime has fallen in three of the four wards, with significant reductions delivered in Hyde Park & Woodhouse ward and Headingley wards, resulting in 449 and 126 less crimes than the previous year. Kirkstall ward did experience a 3% increase in overall crime and work is underway to address this. It is important to note that these figures include all crimes as mentioned above. The following paragraphs will explore these outcomes in more detail.

4.3 The following Appendices (numbered 2 – 5) will concentrate on the following crime types: burglary, robbery, theft of and theft from vehicles, criminal damage and violent crime.

4.4 Appendix 2, provides an overview for Headingley ward and shows that the bulk of the crime reduction mentioned previously, relates to burglary with 154 (28%) fewer burglaries than the previous year. Whilst reductions were also achieved in criminal damage (7%), theft of motor vehicles (32%) and violent crime (12%), theft from motor vehicles did increase by 17%. Theft from motor vehicles remains a challenging area with vehicle users leaving valuables on display in vehicles or leaving vehicles unlocked or with windows open. Various tactics are used to help get the message across about not leaving valuables on display, examples include knocking on doors to inform residents that they have left their vehicle insecure or with items on display, making a note of vehicle registrations and asking DVLA to write to vehicle owners and remind them not to leave goods on display, temporary notices in vehicle crime hotspots using A4 frames purchased through a wellbeing grant in 2005/6, Capture car

deployment into hotspot areas, during this year there were 3 successful “hits” in Headingley, leading to 3 arrests / charges

4.5 Hyde Park and Woodhouse ward achieved reductions in all the crime types in Appendix 3. Significant reductions were achieved in burglary (268 fewer offences, 38%) and criminal damage (172 fewer offences, 28%).

4.6 Kirkstall ward experienced an increase in burglary by 55 offences (12%), an increase in theft from motor vehicle by 29 offences (14%) and an increase in violent crime 20 offences (6%). Criminal Damage and Theft of motor vehicle fell by 59 (13%) and 16 (21%) offences respectively. The increase in burglary in the ward is a worrying trend and work has started to address this by undertaking actions in Hawksworth Wood through:

- developing closer collaboration between statutory agencies and the voluntary and community groups in the area
- establishing a community network to work more closely with all parts of the community, leading to the development of grassroots initiatives such as bulb planting, volunteering, etc
- developing a street champion initiative to increase the opportunity for residents to do more for themselves and report issues of concern to the right agencies for action
- develop a burglary action plan to reduce burglary in Hawksworth Wood, using the aforementioned initiatives to engage and work with residents to tackle burglary and community safety concerns

4.7 Appendix 5 shows a significant reduction in criminal damage and violent crime in Weetwood ward with 53 fewer offences, equating to a 19% reduction. In a similar picture to other wards, theft from motor vehicle increased by 14%, an increase of 29 offences and theft of motor vehicle also experienced an increase of 11 offences.

5 Conclusion

5.1 Burglary continues to be a concern for the Inner North West area and considerable work is underway to address burglary hotspots. Specific work has begun in Hawksworth Wood and Hyde Park (covering parts of both Headingley ward and Hyde Park & Woodhouse ward), using the Outcome Based Accountability model partners and stakeholders have met to identify the causes of burglary in these areas and work with partners to develop solutions to address these causes. This work will continue through the year and will be complimented by a campaign to raise awareness about the increase in burglary experienced during the winter months.

6 Corporate Considerations

6.1 Consultation and Engagement

The projects highlighted in this report will include consultation and engagement under the theme of crime and anti social behaviour with the aim of providing crime reduction advice and to increase reporting.

6.2 Equality and Diversity / Cohesion and Integration

Engagement events and projects take account of equality and diversity in their delivery. Considerations such as date, time, venue, access all have an impact on equality and diversity in relation to ensuring events are accessible to all members of the community.

6.3 Council Policies and City Priorities

Effectively tackling crime and anti social behaviour is a strategic priority in the Safer Leeds Plan 2011-2015.

6.4 Resources and Value for Money

Projects and work highlighted in this report have been funded through a mixture of Safer Leeds, Area Committee, West North West Homes and both Universities. Further opportunities for partnership funding will be explored through the coming year.

6.5 Legal Implications, Access to Information and Call In

There are no legal implications or access to information issues for this report. This report is not subject for call in.

6.6 Risk Management

Risk implications and mitigation are considered for each project.

7 Conclusions

- 7.1 The report outlines potential projects through the Area Committee's Well-Being budget. These are projects which assist in the work programme of the Area Management Team. The report outlines the budget remaining for the Area Committee's use for the rest of the financial year.

8 Recommendations

- 8.1 Members of the Inner North West Area Committee are requested to:

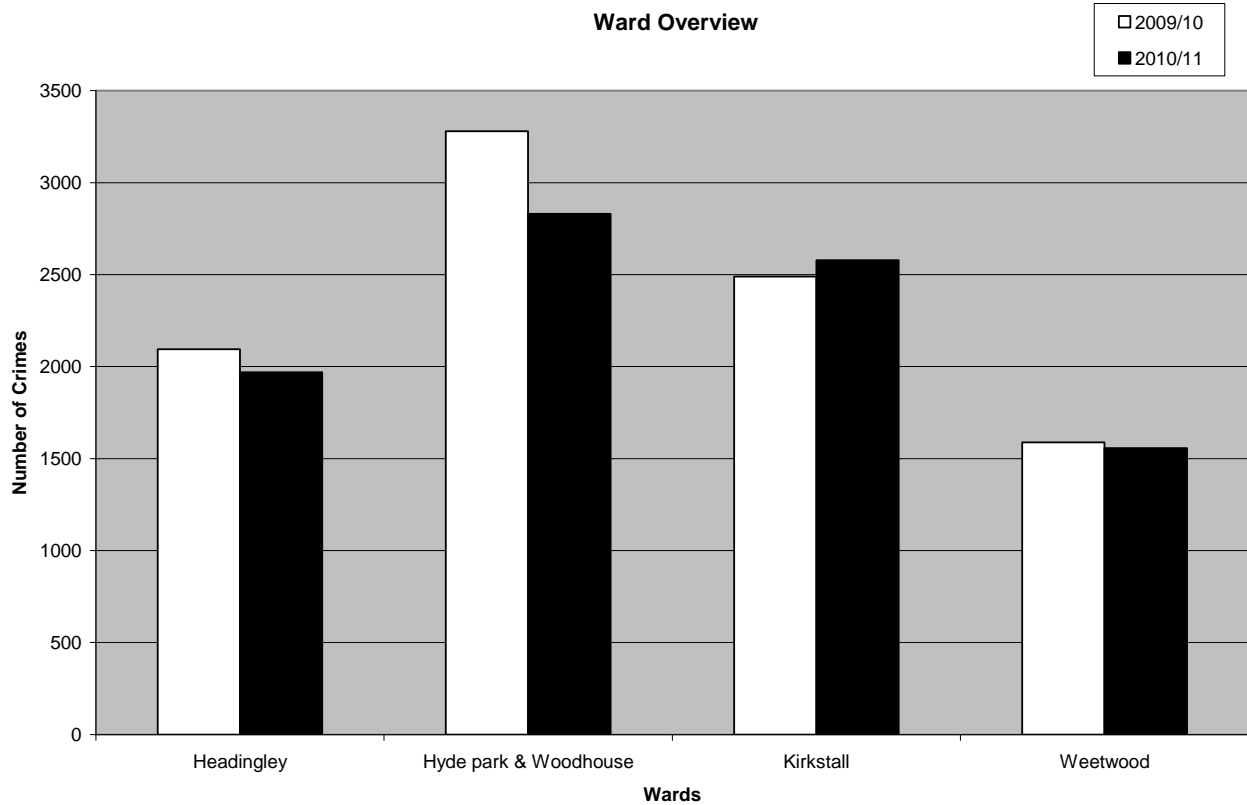
Note the contents of the report and offer comments

9 Background documents

- 9.1 None

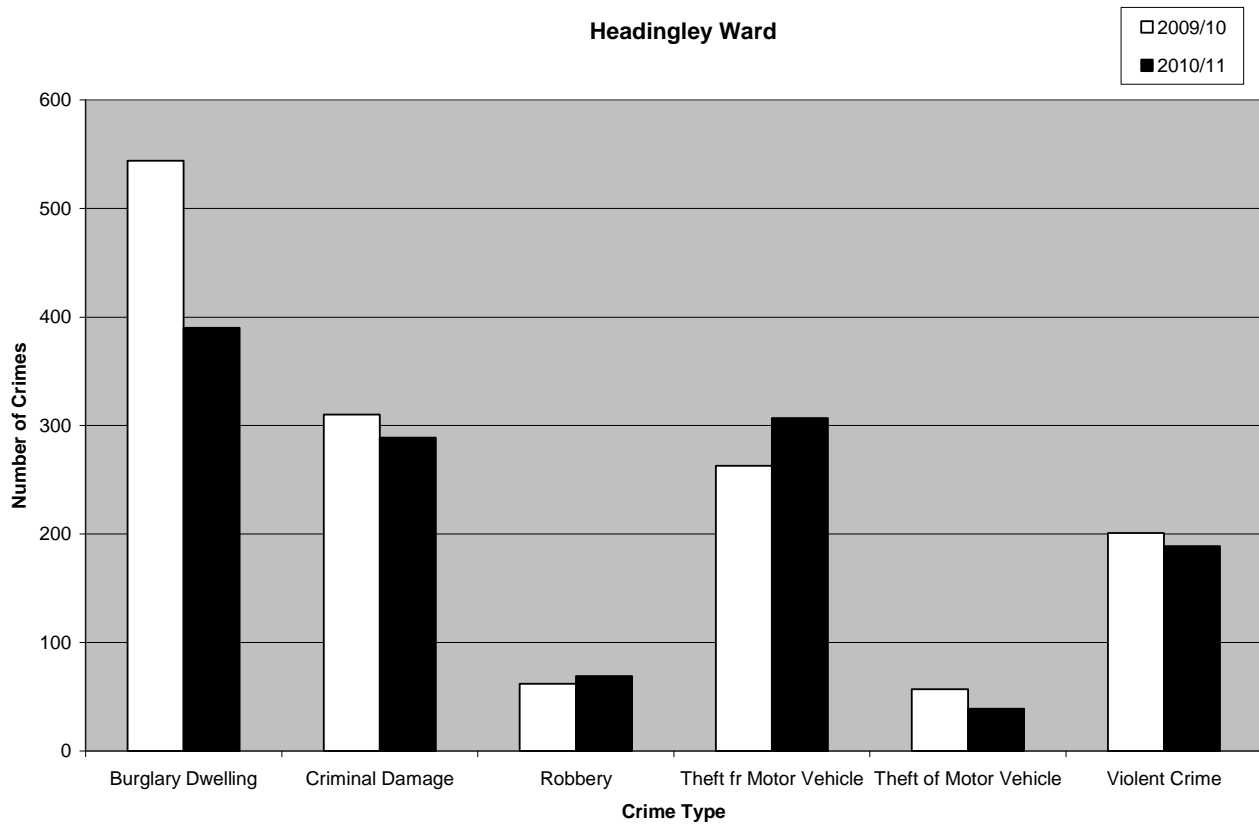
Appendix 1

Ward Name	2009/10	2010/11	# Difference	% Difference
Headingley	2095	1969	-126	-6%
Hyde park & Woodhouse	3280	2831	-449	-14%
Kirkstall	2490	2578	88	3%
Weetwood	1588	1558	-30	-2%



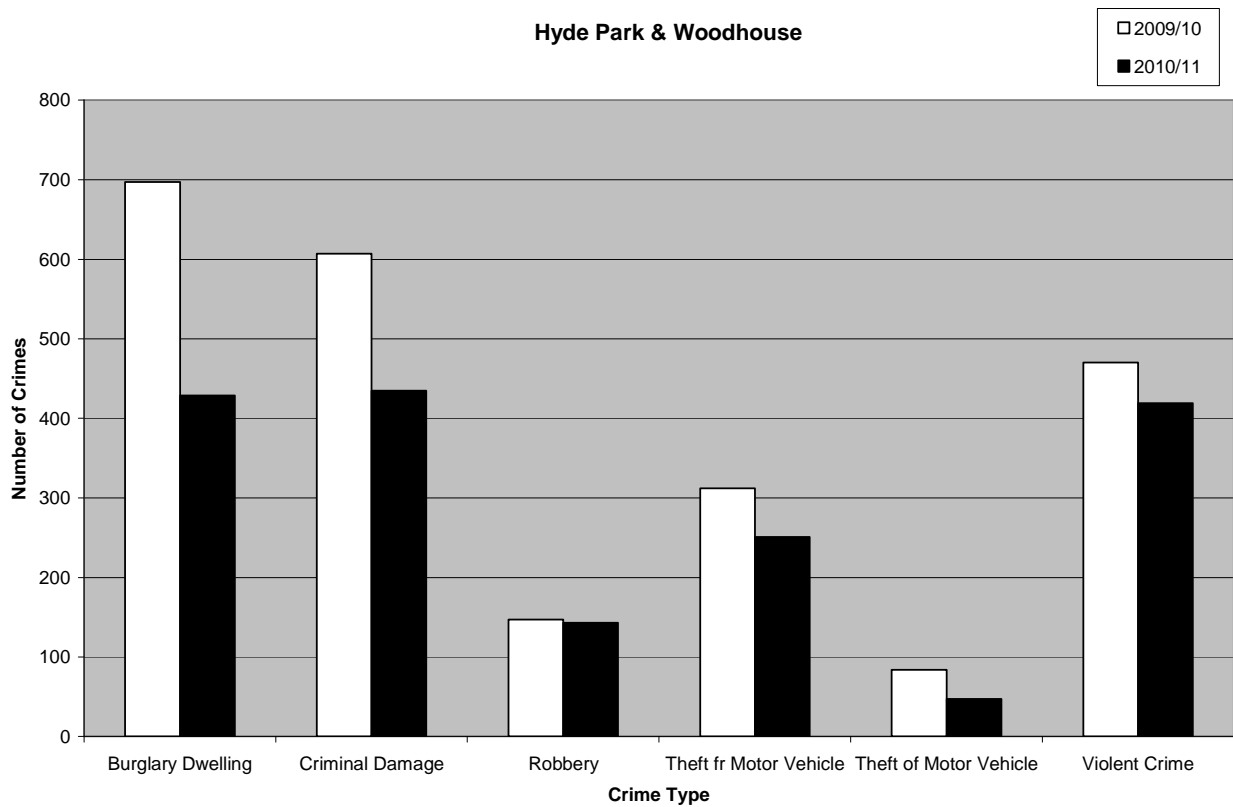
Appendix 2

Headingley Ward	2009/10	2010/11	# Difference	% Difference
Burglary Dwelling	544	390	-154	-28
Criminal Damage	310	289	-21	-7
Robbery	62	69	7	11
Theft fr Motor Vehicle	263	307	44	17
Theft of Motor Vehicle	57	39	-18	-32
Violent Crime	201	189	-12	-6



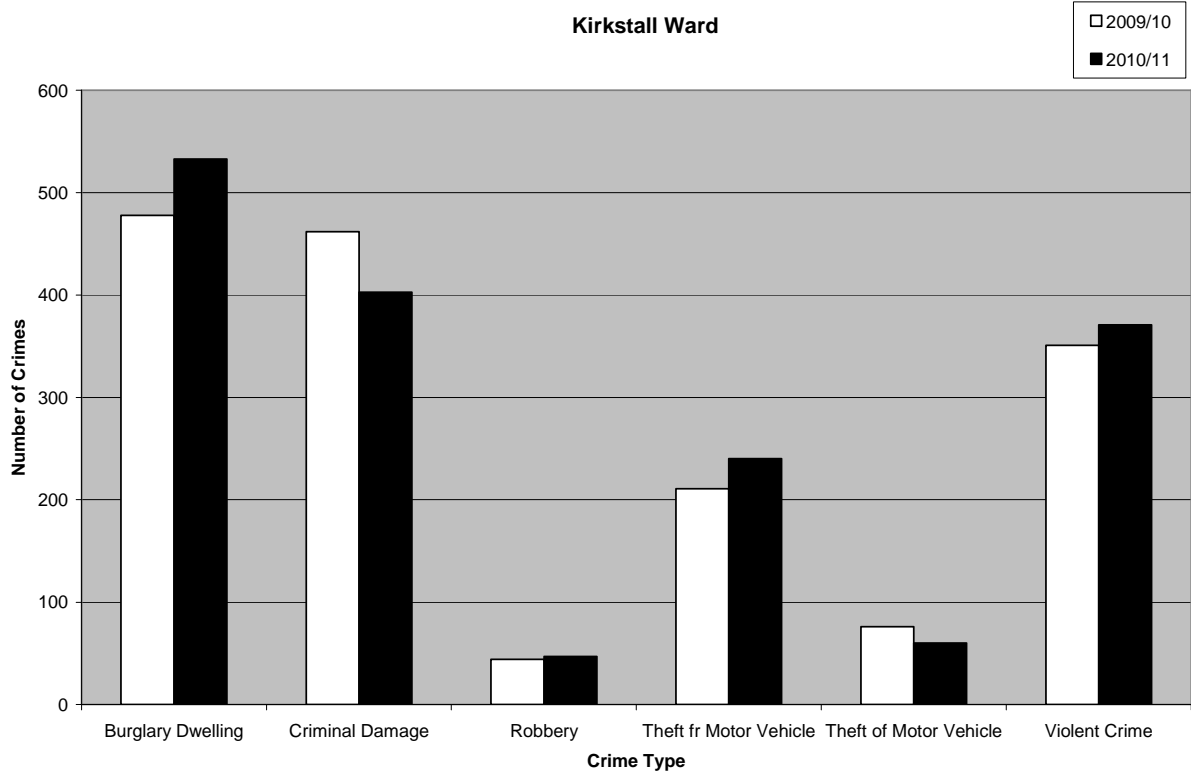
Appendix 3

Hyde Park & Woodhouse	2009/10	2010/11	# Difference	% Difference
Burglary Dwelling	697	429	-268	-38
Criminal Damage	607	435	-172	-28
Robbery	147	143	-4	-3
Theft fr Motor Vehicle	312	251	-61	-20
Theft of Motor Vehicle	84	47	-37	-44
Violent Crime	470	419	-51	-11



Appendix 4

Kirkstall	2009/10	2010/11	# Difference	% Difference
Burglary Dwelling	478	533	55	12
Criminal Damage	462	403	-59	-13
Robbery	44	47	3	7
Theft fr Motor Vehicle	211	240	29	14
Theft of Motor Vehicle	76	60	-16	-21
Violent Crime	351	371	20	6



Appendix 5

Weetwood	2009/10	2010/11	# Difference	% Difference
Burglary Dwelling	298	297	-1	0
Criminal Damage	281	228	-53	-19
Robbery	33	24	-9	-27
Theft fr Motor Vehicle	205	234	29	14
Theft of Motor Vehicle	28	39	11	39
Violent Crime	220	187	-33	-15

