

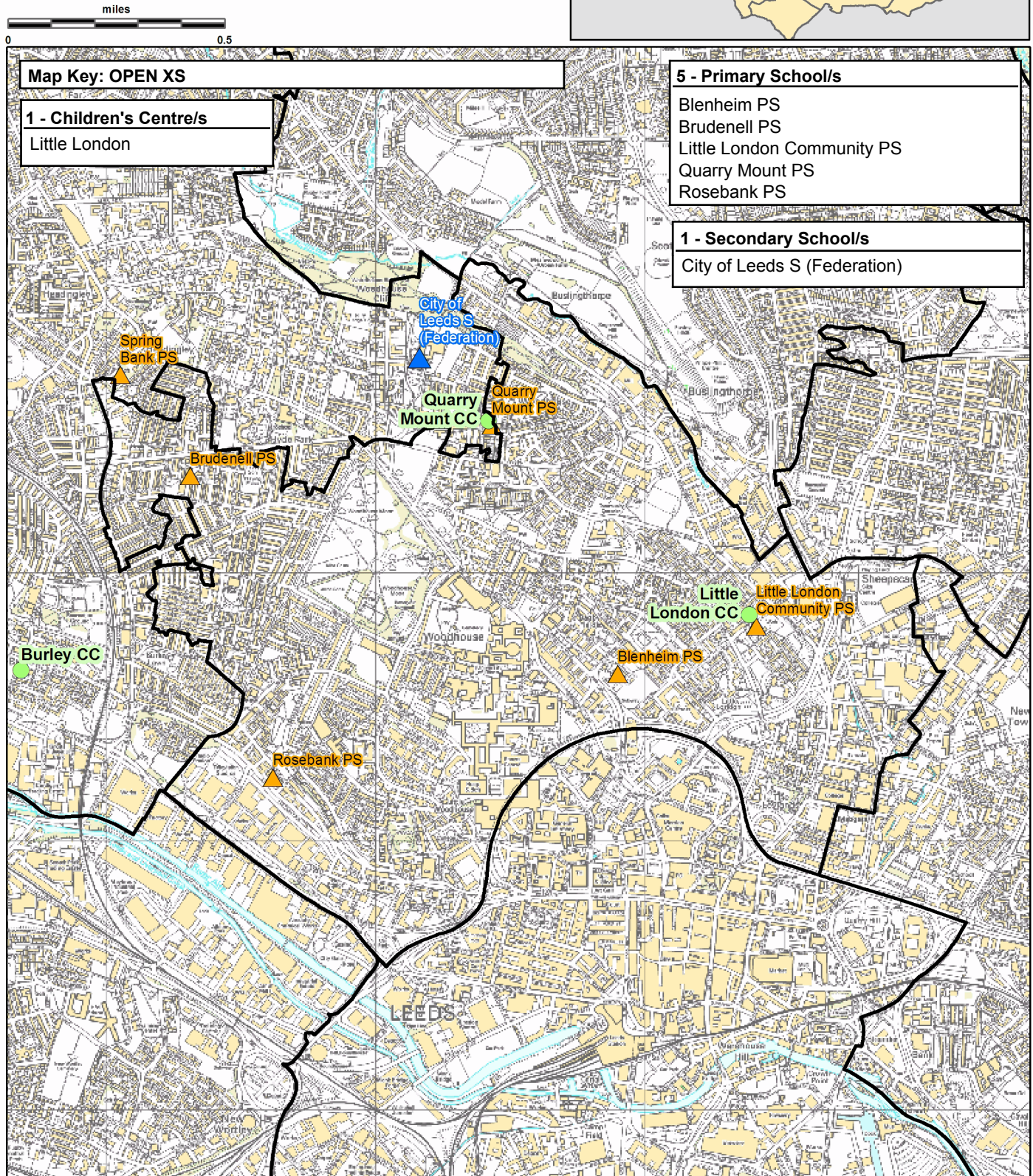
OPEN XS

This report was produced by the Children's Performance Service on 01/06/2012. The information in these overviews are based on the cluster data profile version 5.12.

For more information telephone 0113 39 50701 or email educ.pmi@leeds.gov.uk or visit:

www.leedsinitiative.org/ClusterDataProfile.aspx

The map to the right gives the position of the cluster in Leeds. The map below shows the location of the Children's Centres, Primary and Secondary Schools in the cluster.



Cluster Overviews key**Data Period:**

The codes in the key to the right are for the time periods that the data in these reports cover. They will appear next to all data sets.

Academic Year
Calendar Year
Financial Year
Snapshot
Other

DP:A
DP:C
DP:F
DP:S
DP:O

Cluster Overview

Data Source: January School Census					DP: S
Primary Schools	DFE	Total Number on roll			
		2010	2011	2012	
Blenheim Primary School	2408	185	237	258	
Brudenell Primary School	2409	234	241	237	
Little London Primary School	2412	173	185	199	
Quarry Mount Primary School	2413	157	173	169	
Rosebank Primary School	2415	261	242	267	
Total		1010	1078	1130	

Data Source: January School Census					DP: S
Secondary Schools	DFE	Total Number on roll			
		2010	2011	2012	
City of Leeds School	4031	521	411	346	
Total		521	411	346	

Data Source: Children's Services - Feb 2012		DP: S
Children's Centre reach area registration for families of children aged 0-5	% Registered	
Cluster	71.91	
Wedge	53.88	
Leeds all	60.23	

Data Source: Children's Services	
Children's Centre	Ofsted ID
Little London	EY331899

Data Source: The office of National Statistics population mid-year estimates										DP: S
Population Estimates	0-15			Working Age			60/65+			
	2008	2009	2010	2008	2009	2010	2008	2009	2010	
Cluster	2270	2349	2417	32054	32124	33294	1629	1594	1585	
Wedge	44108	44366	44774	207876	208717	211509	47163	47875	48413	
Leeds all	132741	133396	134493	516578	522769	531036	129937	131536	133240	

Data Source: NHS Leeds													DP: S
Under Fives	September 2010						September 2011						
	0-1	1-2	2-3	3-4	4-5	Total	0-1	1-2	2-3	3-4	4-5	Total	
Cluster	252	268	226	182	217	1145	233	276	263	216	208	1196	
Wedge	3318	3278	3014	3023	2870	15503	3376	3315	3236	3035	3102	16064	
Leeds all	10202	9848	9478	9195	9113	47836	9996	10173	9787	9438	9319	48713	

Data Source: January School Census													DP: S
Percentage of pupils who are:	Black and Minority Ethnic			English as an Additional Language			Free School Meal Eligible			Special Education Needs			
	2010	2011	2012	2010	2011	2012	2010	2011	2012	2010	2011	2012	
Primary													
Cluster school	83.5	83.4	84.1	69.7	71.2	68.5	35.3	33.6	35.9	18.8	17.0	17.3	
Cluster residence	77.5	77.6	78.8	58.8	61.7	60.0	35.7	34.6	35.8	20.5	17.3	18.6	
Wedge school	19.3	20.7	22.2	13.3	14.0	14.3	18.7	19.7	19.4	15.1	15.3	15.6	
Total primary	23.6	24.8	26.4	15.8	16.5	17.1	21.5	22.2	22.0	17.8	17.8	17.4	
Secondary													
Cluster school	72.6	70.1	72.8	54.7	55.2	65.0	39.9	46.2	48.8	42.2	38.9	23.1	
Cluster residence	66.9	67.0	69.6	36.0	38.5	40.7	38.2	40.1	40.6	30.7	28.6	27.8	
Wedge school	15.7	16.1	16.7	9.6	9.8	10.2	16.0	16.3	16.5	19.2	17.8	14.6	
Total secondary	18.6	19.4	20.4	10.4	10.0	11.1	19.0	19.4	19.5	21.4	20.4	19.0	
Leeds all	21.4	22.5	23.9	13.4	13.7	14.6	20.6	21.1	21.1	20.0	19.6	18.7	

Data Source: HM Revenue and Customs - taken on 31st August 2007-2009										DP: S
Child Poverty	Number of children (under 16) in families in receipt of CTC or IS/JSA			Number of children (all ages) in families in receipt of CTC or IS/JSA			Number of children in poverty, by age of youngest child, 2009			
	2007	2008	2009	2007	2008	2009	0-4	5-10	11-15	16-19
Cluster	915	865	930	1045	995	1045	620	245	140	40
Wedge	8010	7990	8415	8935	8950	9465	4915	2700	1460	390
Leeds all	30235	29700	31030	33690	33300	34965	18720	9640	5115	1490

Data Source: Children's Services - Summer Term 2011					DP: S	
Nursery Education Grant Claims	Number of eligible children	Number of:			Resident Claims	Non Resident Claims
		Claims by childcare setting				
Cluster		311		373	177	196
Leeds all		14500		13851	9704	4148

Data Source: January School Census and 2010 Index of Multiple Deprivation										DP: S
IMD % of pupils resident in most deprived areas	3% most deprived			10% most deprived			20% most deprived			
	10	11	12	10	11	12	10	11	12	
Primary										
Cluster school	8.5	7.4	6.6	27.9	21.0	21.7	51.4	46.2	48.2	
Cluster residence	0.0	0.0	0.0	24.5	15.2	15.4	47.7	49.8	53.2	
Wedge school	1.5	2.8	2.5	15.6	15.0	15.1	26.8	27.6	27.8	
Total primary	8.2	8.4	8.3	28.1	27.1	27.3	36.6	37.6	38.0	
Secondary										
Cluster school	20.7	16.5	17.2	54.2	45.3	41.9	70.4	66.7	61.0	
Cluster residence	0.0	0.0	0.0	27.1	19.8	15.8	50.5	50.9	47.6	
Wedge school	2.6	3.1	2.9	15.0	14.2	14.0	24.6	25.0	24.7	
Total secondary	7.0	7.5	7.6	24.0	23.5	23.8	32.3	33.5	33.6	
Leeds all	7.7	8.0	8.0	26.4	25.7	25.9	34.8	35.9	36.2	

Data Source: January School Census and CACI ACORN											DP: S
KEY: Wealthier Achievers(WA), Urban Prosperity (UP), Comfortably Off (CO), Moderate Means (MM), Hard Pressed (HP)											
Percentage of pupils in each ACORN category	2011					2012					
	WA	UP	CO	MM	HP	WA	UP	CO	MM	HP	
Primary											
Cluster school	0.5	46.8	1.9	8.9	40.8	0.4	47.4	0.8	9.5	40.8	
Cluster residence	0.0	44.1	0.9	7.1	47.9	0.0	43.5	1.0	5.9	49.6	
Wedge school	14.6	8.0	31.3	13.0	32.3	14.2	8.2	31.5	13.0	32.2	
Total primary	15.4	5.9	27.8	15.8	34.3	15.0	6.0	27.7	15.9	34.6	
Secondary											
Cluster school	1.5	29.7	6.6	24.1	37.0	0.3	35.3	7.8	23.7	32.1	
Cluster residence	0.0	41.0	0.9	7.3	50.9	0.0	45.1	0.9	7.5	46.5	
Wedge school	18.4	7.0	32.6	12.6	28.8	18.4	7.1	32.8	12.7	28.4	
Total secondary	17.1	5.2	29.7	14.7	32.5	16.9	5.3	29.8	14.7	32.6	
Leeds all	16.1	5.6	28.5	15.4	33.6	15.8	5.7	28.5	15.4	33.8	

Data Source: DWP information Directorate													DP: F
KEY: Job Seekers Allowance (JSA), Incapacity Benefit (IB), Lone Parent Benefit (LPB), Total Out of Work (TOW)													
Unemployment Percentage of working age people in receipt of:	2009				2010				2011				
	JSA	IB	LPB	TOW	JSA	IB	LPB	TOW	JSA	IB	LPB	TOW	
Cluster	3.2	3.5	0.9	8.0	3.2	3.3	0.8	7.7	3.1	3.4	0.8	7.6	
Wedge	3.5	4.7	1.2	9.8	3.4	4.7	1.2	9.7	3.4	4.7	1.0	9.5	
Leeds all	4.4	5.9	1.8	12.6	4.3	5.8	1.7	12.3	4.2	5.8	1.5	12.1	

Data Source: AXCIOM Lifestyle Survey 2009-2011													DP: S					
Property type by %									Length of residence by %									
Owned			Rented - Council			Rented - Private			Less than 1 year			2-5 years			More than 5 years			
09	10	11	09	10	11	09	10	11	09	10	11	09	10	11	09	10	11	
Cluster	24.6	24.8	138.2	33.9	34.6	127.6	41.6	40.7	0.0	39.5	44.4	23.9	23.4	14.2	21.5	37.1	41.4	54.6
Wedge	62.9	62.8	34.8	21.7	21.6	71.9	15.4	15.6	0.0	9.4	10.7	6.1	20.6	20.6	18.3	70.0	68.7	75.5
Leeds all	61.5	61.6	39.0	24.0	23.9	61.2	14.5	14.6	0.0	7.9	8.1	5.1	20.3	20.0	18.5	71.9	71.9	76.4
Income by %																		
<10k			10-20k			20-30k			30-40k			40-50k			50k+			
09	10	11	09	10	11	09	10	11	09	10	11	09	10	11	09	10	11	
Cluster	39	34	34	24	19	27	14	20	9	8	13	10	6	6	9	10	8	11
Wedge	20	17	18	21	20	22	16	16	15	15	17	18	14	11	13	15	19	14
Leeds all	20	18	18	21	20	23	16	15	16	15	18	17	14	13	13	14	16	14
Struggling with payments by %																		
						Food			Bills			Mortgage						
						09	10	11	09	10	11	09	10	11				
Cluster						23.8	16.8	8.2	18.9	16.3	10.8	0.2	1.3	2.4				
Wedge						15.4	11.1	6.2	15.2	12.6	7.5	1.7	2.0	1.6				
Leeds all						15.9	10.8	6.4	16.3	13.0	8.3	2.2	2.2	1.7				

Being Healthy

Data Source: NHS Leeds													DP: Various - Listed with each report										
Birth Data						3 year rolling average of births below 2.5kg						Number and rate of conceptions per 1000 15-17 year olds											
DP: C						% low birth weight babies						DP: O			Number			Rate					
						2006-08			2007-09			2008-10			June to May			2008-09			2009-10		
Cluster						10.2	11.3	10.9				Cluster	25	20	51	44							
Wedge						7.1	7.1	6.8				Wedge	380	355	41	40							
Leeds all						7.8	7.8	7.6				Leeds all	1220	1145	45	43							
DP: C						% of women receiving a health and social care needs assessment at 12 weeks as a percentage of live births in the same year			DP: F			% Initiating breastfeeding April to March			% breastfeeding at 6 weeks April to March								
						2009	2010	2011				2009-10	2010-11	2009-10	2010-11								
Cluster						76.0	75.6	78.7				78.2	76.3	56.0	59.0								
Wedge						83.7	85.7	85.3				69.6	68.0	42.2	40.1								
Leeds all						81.6	82.9	84.0				67.6	65.1	40.4	39.3								
DP: C						Number of emergency admissions by age group 2007-11			Number of emergency admissions to hospital for injury, poisoning and certain other consequences of external causes by age group														
						0-4	5-10	11-18				0-4	5-10	11-18									
Cluster						788	161	518				90	49	177									
Wedge						9185	2518	6030				1108	809	2250									
Leeds all						29793	8247	18194				3419	2522	6711									
Immunisation Data																							
% of 2 year olds receiving vaccinations in quarter 3 for:						% of 5 year olds receiving vaccinations in quarter 3 for:																	
DP: F						Diphtheria			MMR			Diphtheria			MMR								
						09-10	10-11	11-12	09-10	10-11	11-12	09-10	10-11	11-12	09-10	10-11	11-12						
Cluster						98	95	96	90	83	93	97	85	89	85	76	89						
Wedge						97	97	98	88	90	95	95	93	96	93	90	94						
Leeds all						96	96	97	86	88	94	95	94	96	91	91	95						

Data Source: National Child Measurement Programme													DP: A													
Obesity																										
Obesity in Reception									Obesity in Year 6																	
% Obese						% Obese or overweight			% Obese						% Obese or overweight											
08-09			09-10			10-11			08-09			09-10			10-11			08-09			09-10			10-11		
Cluster	13.2		9.3		7.7		26.8		22.9		24.4		27.1		28.4		25.6		42.2		41.2		39.0			
Wedge	9.6		10.0		9.4		23.0		24.4		23.1		20.6		20.2		18.7		34.2		33.9		32.7			
Leeds all	9.4		10.2		9.7		21.7		23.7		23.4		20.3		20.7		20.0		34.3		35.1		34.3			
Obesity																										
Obesity in Reception									Obesity in Year 6																	
3 year average 2008-2011						% Obese or overweight			3 year average 2008-2011						% Obese or overweight											
% Obese						% Obese or overweight			% Obese						% Obese or overweight											
Cluster	9.77				24.56		27.02		40.86																	
Wedge	9.66				23.49		19.88		33.66																	
Leeds all	9.77				22.96		20.32		34.56																	

Stay Safe

Data Source: Children's Services					DP: Various - Listed with each report						
Number of LAC and Child protection plans	The number of children and young people looked after by the Local Authority - March based on home address before coming into care					based on placement address			The number of children with child protection plans - March		DP: S
	DP: S	2011	2012		2012	2011	2012				
Cluster		59	54		15	24	27				
Wedge		0	411		326	0	379				
Leeds all		1439	1454		1454	947	1019				
Number of Common Assessments (CAFs)				Social Care			Social Care Referrals			Requests for Service	
DP: C	2008	2009	2010	2011	DP:A	2009	2010	2011	DP:S	Feb 11 - Jan 12	
Cluster	17	25	28	24	Cluster	308	309	307		715	
Wedge	140	243	312	278	Wedge	3813	3622	3852		8460	
Leeds all	457	849	1115	892	Leeds all	14248	13784	14000		30539	
Number of Child and Adolescent Mental Health Services referrals											
DP: S	aged 11 and under				aged 12-18				total referrals		
September-October	2009-10		2010-11		2009-10		2010-11		2009-10 2010-11		
Cluster											
Cluster											
Wedge											
Leeds all											

Make a positive Contribution

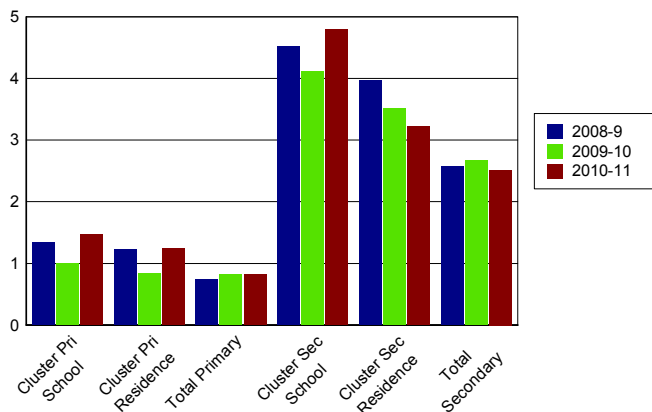
Data Source: West Yorkshire Police										DP: C
Property Crime Number of recorded crimes for:	Burglary dwelling		Burglary elsewhere		Criminal damage		Robbery		Vehicle crime	
	10	11	10	11	10	11	10	11	10	11
Cluster	756	556	147	135	610	430	136	190	475	269
Wedge	4156	4057	2127	2015	4299	3249	379	413	2945	2637
Leeds all	9508	8487	5681	5408	13599	10426	1297	1226	9168	7971
Personal Crime Number of recorded crimes for:					Drug Offences		Theft from person		Violent crime	
					10	11	10	11	10	11
Cluster					38	145	118	267	443	424
Wedge					187	934	290	525	2966	2712
Leeds all					1248	3192	2235	3034	11233	10896
Domestic Violence Incidents	Number of incidents recorded with a domestic qualifier or disposition code on the Storm WYP incident recording system - 2011									
Cluster	365									
Wedge	3695									
Leeds all	14525									

Data Source: Youth Offending Service										DP: A
Youth Offending	Number of Offenders					Number of Offences				
	07-08	08-09	09-10	10-11		07-08	08-09	09-10	10-11	
Cluster	52	45	27	31		110	92	63	58	
Wedge	627	474	334	355		1616	1031	732	785	
Leeds all	2741	2166	1522	1511		6331	4883	3134	3150	
April 2010 - March 2011 Number of offences by young offenders										
	Burglary	Breaches	Criminal Damage	Drugs Offences	Motoring and Vehicle	Other	Public Order	Theft and handling	Violence against the person	
Cluster	5	SUPP	9	8	SUPP	SUPP	SUPP	15	6	
Wedge	96	68	86	50	62	67	58	171	127	
Leeds all	291	270	328	204	218	358	282	612	587	

Data Source: School Census												DP: A		
Attendance and persistent absence by percentage	Attendance			Authorised Absence			Unauthorised Absence			Persistent Absence 15%				
	08-09	09-10	10-11	08-09	09-10	10-11	08-09	09-10	10-11	08-09	09-10	10-11		
Primary														
Cluster school	93	93	94	6	6	5	1.3	1.0	1.5	8.8	8.9	6.2		
Cluster residence	93	93	94	6	6	5	1.2	0.8	1.2	8.4	8.9	5.8		
Total primary	94	94	95	5	5	4	0.7	0.8	0.8	5.9	5.5	4.3		
Secondary														
Cluster school	88	89	88	8	7	7	4.5	4.1	4.8	23.2	21.8	20.7		
Cluster residence	89	90	91	7	6	6	4.0	3.5	3.2	18.9	16.4	15.6		
Total secondary	92	92	92	6	6	5	2.6	2.7	2.5	13.0	13.1	11.2		

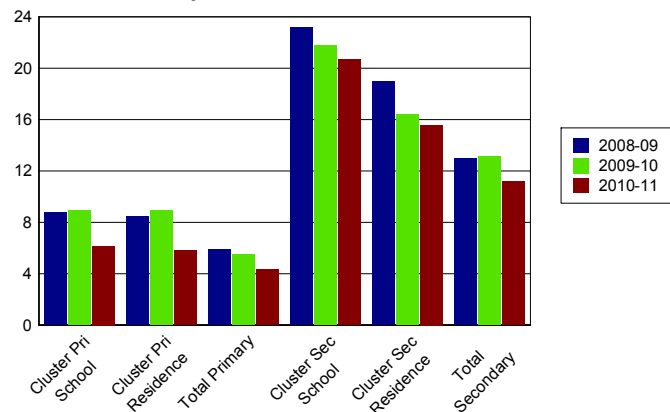
% Unauthorised Absence

2008-2011



% Persistent Absence

by 15% measure 2008-2011



Data Source: Children's Services												DP: A		
Exclusions	Fixed Term Exclusions						Permanent Exclusions							
	Number			Rate per thousand			Number			Rate per thousand				
Primary	08-09	09-10	10-11	08-09	09-10	10-11	08-09	09-10	10-11	08-09	09-10	10-11		
Cluster school	2	9	2	2.0	8.9	1.9	0	0	0	0.0	0.0	0.0		
Cluster residence	2	7	1	2.1	7.9	1.0	0	0	0	0.0	0.0	0.0		
Total primary	467	371	455	7.7	6.0	7.3	2	2	2	0.0	0.0	0.0		
Secondary														
Cluster school	39	36	0	67.8	69.1	0.0	0	0	0	0.0	0.0	0.0		
Cluster residence	77	59	41	135.3	105.4	69.4	2	1	0	3.5	1.8	0.0		
Total secondary	4350	4286	3806	93.6	93.1	83.2	52	57	44	1.1	1.2	1.0		

Enjoy and Achieve

Data Source: Keypas and DFE performance tables
DP: A
Foundation Stage Profile Data The percentage of pupils achieving a good level of development (78+ points overall and 6+ points in all PSE and CCL strands)

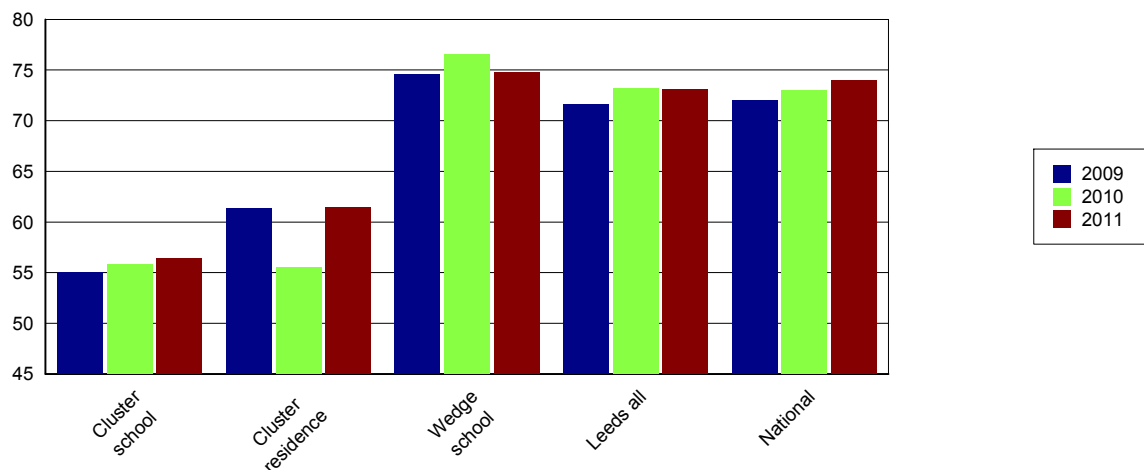
	2008	2009	2010	2011
Cluster school	31	26	41	45
Cluster residence	34	30	47	49
Leeds all	47	51	53	58

KS2 Data DP: A	English 4+			English 5+			Maths 4+			Maths 5+			English & Maths 4+		
	09	10	11	09	10	11	09	10	11	09	10	11	09	10	11
Cluster school	63	63	64	10	12	11	68	69	67	15	20	19	55	56	56
Cluster residence	73	65	69	18	12	20	73	68	73	18	18	26	61	56	61
Wedge school	83	82	83	32	34	30	80	82	80	33	33	35	75	77	75
Leeds all	79	79	81	28	31	32	77	79	78	33	31	32	72	73	73
National	80	80	82	29	33	29	79	79	80	35	34	35	72	73	74

KS2 Data - Expected progress	Made 2 levels of progress in English		Made 2 levels of progress in Maths	
	Number of pupils	Percentage	Number of pupils	Percentage
Cluster school	68	81.0	66	77.6
Wedge school	2174	88.1	2092	84.7
Leeds all	6334	88.6	6087	85.0
National		84.0		83.0

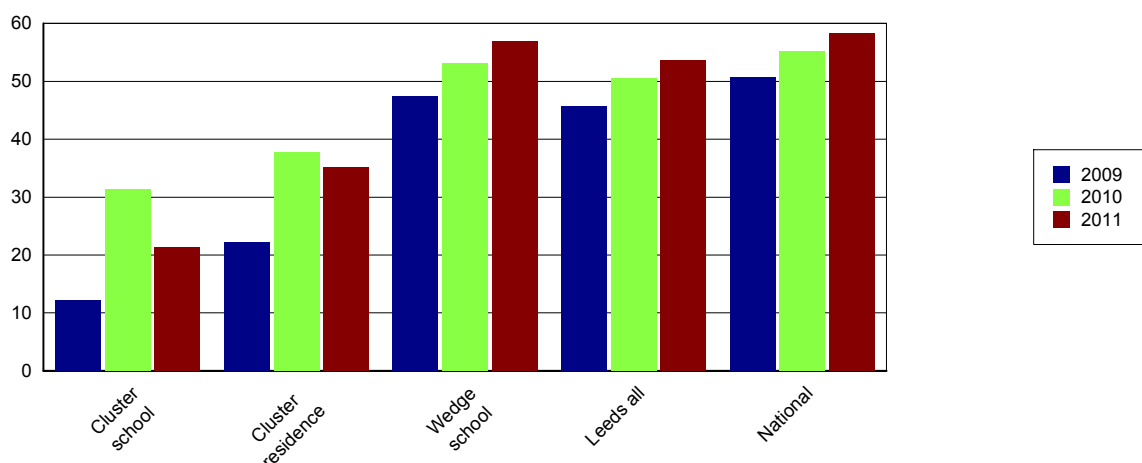
Percentage of English and Maths

Level 4+



Data Source: EPAS and DFE performance tables											DP: A		
The results are for GCSE & equivalent qualifications. The calculation of achieving no qualifications includes all qualifications													
KS4 Data	% of 5+ A*-C			% of 5+ A*-C inc Eng & Maths			% English Baccalaureate	% of 5+ A*-G			% achieving no qualifications		
	09	10	11	09	10	11		11	09	10	11	09	10
Cluster school	24	53	40	12	31	21	2	73	83	83	7	3	2
Cluster residence	49	64	73	22	38	35	3	86	92	89	2	3	3
Wedge school	68	75	81	47	53	57	19	92	94	96	1	1	1
Leeds all	67	76	82	46	51	54	13	91	94	94	2	2	1
National	70	76	81	51	55	58	15	94	95	95		1	1

Percentage 5 A*-C Including English and Maths



Achieve Economic Well Being

Key: Not in Employment, Education or Training (NEET), In Employment, Education or Training (EET), in Full time Education (FE)													
Data Source: November destination survey													DP: S
NEET/FE		Number of NEET			% NEET			Number of FE			% FE		
		2009	2010	2011	2009	2010	2011	2009	2010	2011	2009	2010	2011
Cluster school	Year 11	20	6	9	14	5	7	97	112	96	66	88	76
	Year 12	SUPP	SUPP	SUPP	SUPP	SUPP	SUPP	32	19	11	91	86	SUPP
	Year 13	SUPP	SUPP	SUPP	SUPP	SUPP	SUPP	11	16	SUPP	58	64	SUPP
Cluster residence	Year 11	18	SUPP	SUPP	14	SUPP	SUPP	94	96	85	73	87	83
	Year 12	SUPP	SUPP	SUPP	SUPP	SUPP	SUPP	31	33	23	91	92	82
	Year 13	SUPP	SUPP	SUPP	SUPP	SUPP	SUPP	15	20	27	75	83	79
Leeds all	Year 11	646	393	357	8	5	5	6703	7194	6564	80	87	87
	Year 12	132	67	115	3	2	3	3436	3476	3550	90	93	93
	Year 13	121	135	120	5	4	4	2067	2350	2593	78	76	84

Data Source: Integrated Youth Support Service										DP: O
16-18 NEET and EET Nov 2011 to Jan 2012	NEET		EET		Not Known		Other Activity			
	Number	%	Number	%	Number	%	Number	%		
Cluster	44	12.1	311	86.1	SUPP	SUPP	SUPP	SUPP		
Wedge	452	6.1	6860	93.0	104	1.4	21	0.3		
Leeds all	1538	7.0	20170	91.7	343	1.6	58	0.3		

Please Note: Leeds totals for 16-18 NEET will not match publicised totals as published totals include a proportion of those whose status has expired